

M-Pathways Accounts Receivable and Billing

Data Dictionary



Copyright © 2009
The Regents of The University of Michigan

All rights reserved. This document may be reproduced or reprinted, in whole or in part, without permission as long as the above copyright statement and source are clearly acknowledged. This publication or any reproductions may not be sold. Copyrights, trademarks, and service marks referred to in this documentation are the property of their respective owners.

Michigan Administrative Information Services
University of Michigan
July 2009

Comments and Suggestions

Your feedback is very important to us. As a U-M data warehouse user, we encourage you to tell us what you like or dislike about this Data Dictionary. Your comments and suggestions will help us improve this and other MAIS documentation for you in the future.

Please e-mail your comments and suggestions to maishelpdesk@umich.edu. Thank you.

Contents

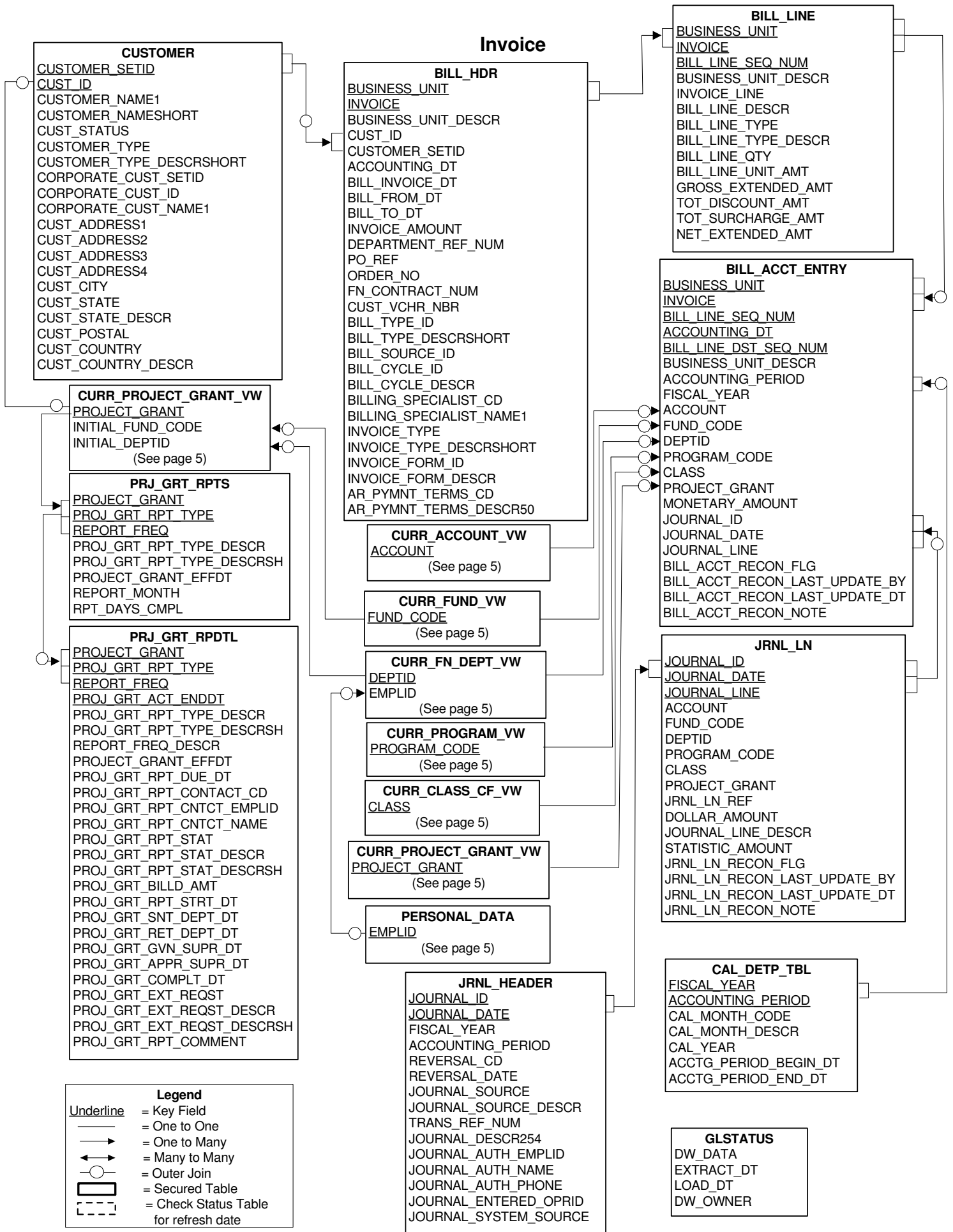
Accounts Receivable and Billing Tables Diagram	2
Accounts Receivable and Billing Tables Description	7
Accounts Receivable and Billing Data Element Dictionary	10

Accounts Receivable and Billing Tables Diagram

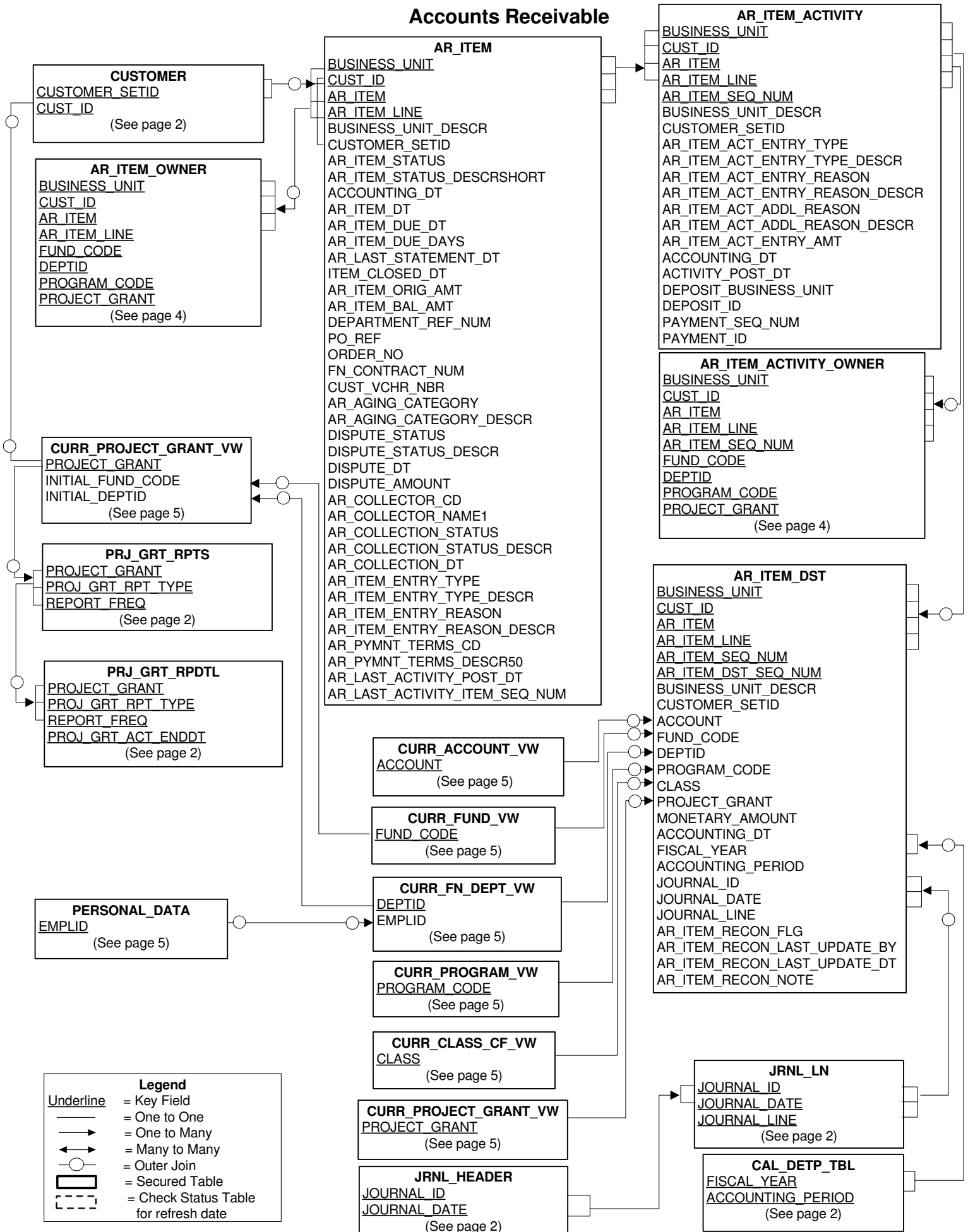
The Accounts Receivable and Billing Tables Diagram illustrates the *logical* relationships among the Accounts Receivable and Billing tables. A logical link (connecting line) between two tables indicates that there is a direct data relationship between the two tables. Physically, any tables with a common element can be joined. However, two tables with common elements may not necessarily have logical links to one another. Joining tables without logical links may produce undesired results; a thorough understanding of the data is needed to guarantee accurate results.

All tables within a data set are not necessarily refreshed on the same schedule. It is ***extremely important*** to query the status table to determine when the data in each table was last refreshed and to determine the impact this will have on query results.

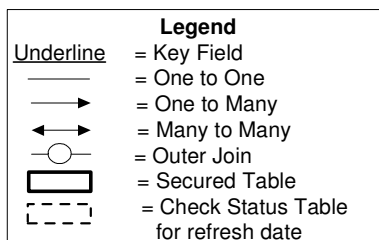
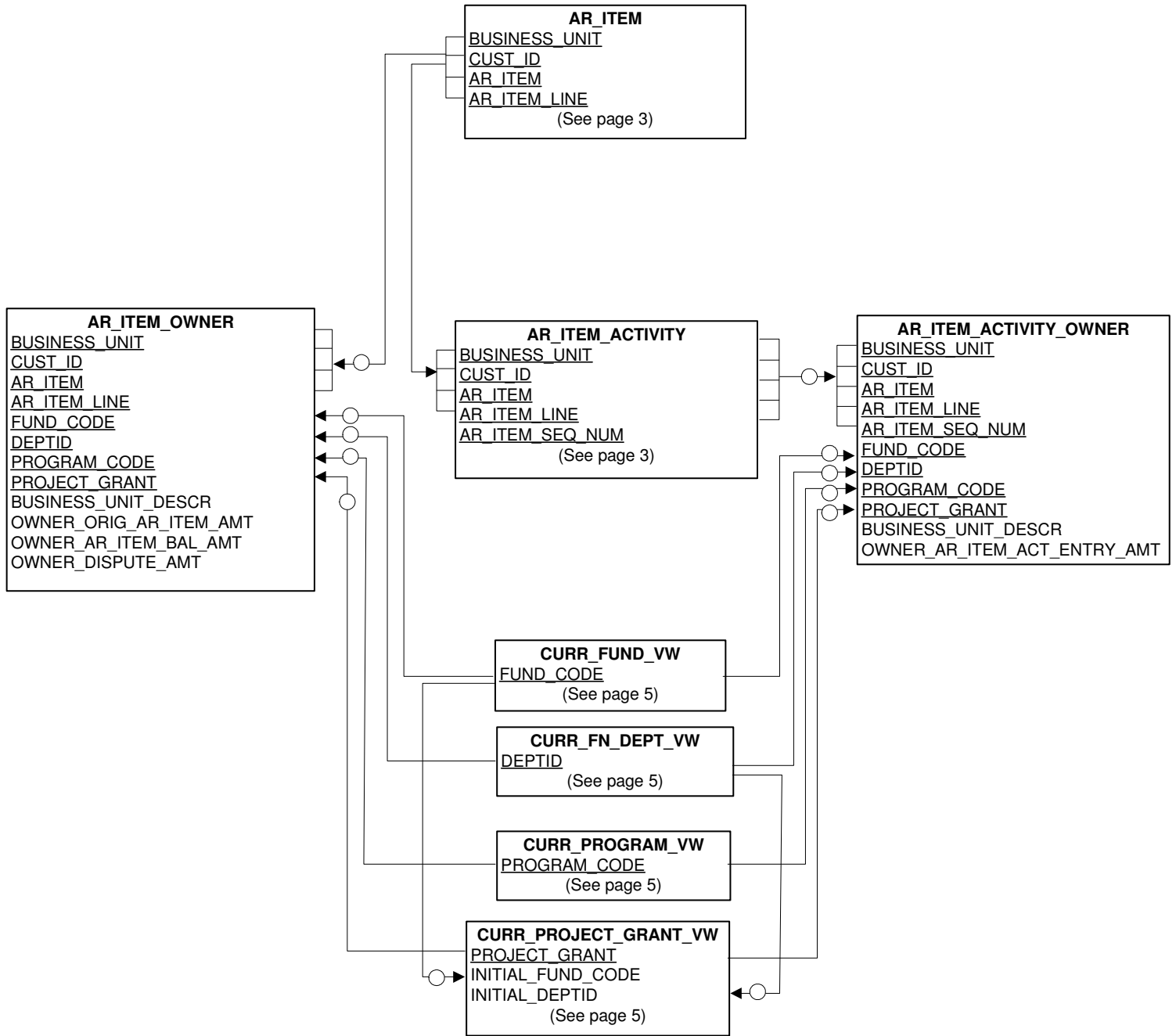
Note: The Accounts Receivable and Billing Tables Diagram is shown on pages 2 thru 6.



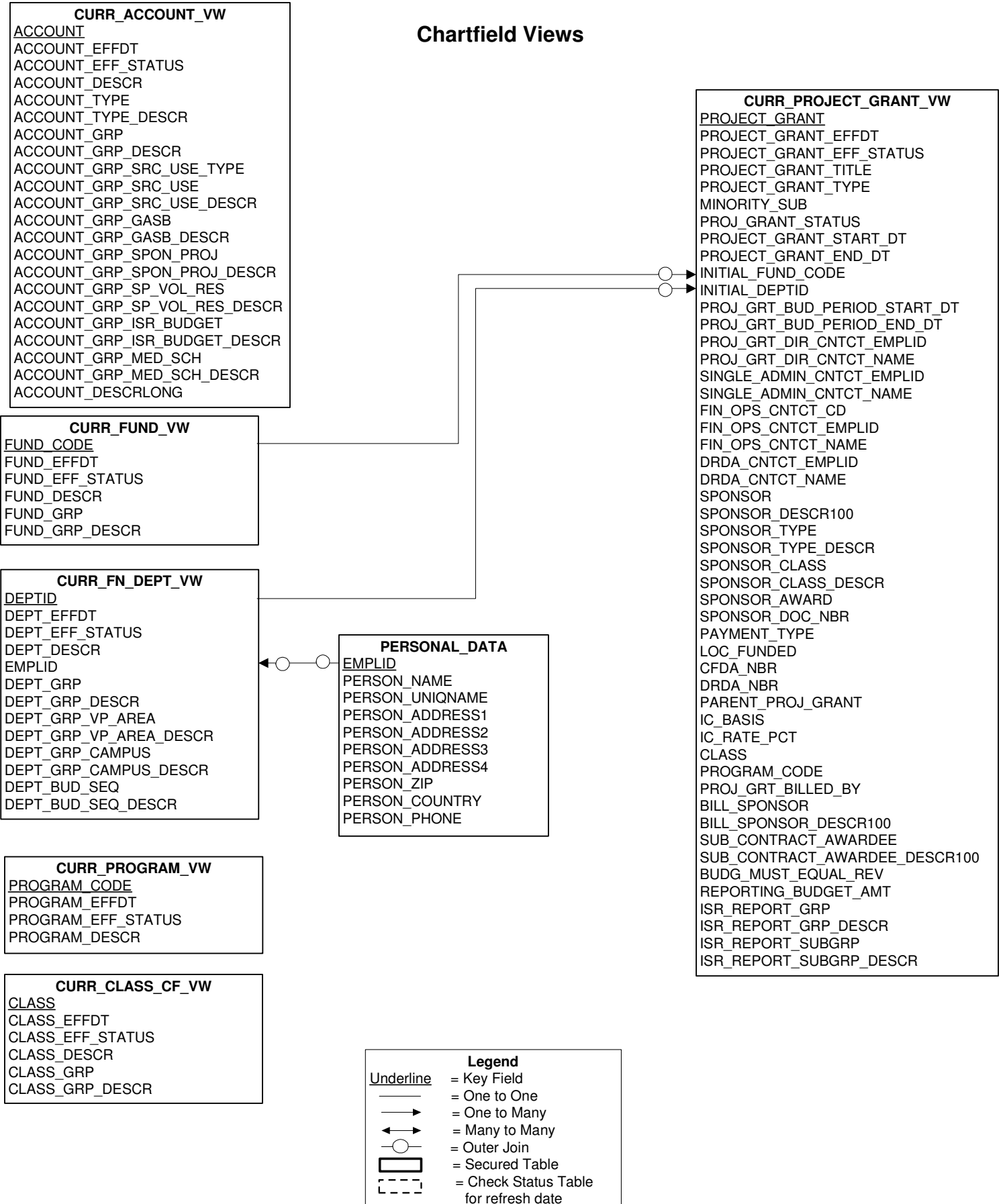
Accounts Receivable



Accounts Receivable (con't)



Chartfield Views



CURR_ACCOUNT_VW

ACCOUNT
 ACCOUNT_EFFDT
 ACCOUNT_EFF_STATUS
 ACCOUNT_DESCR
 ACCOUNT_TYPE
 ACCOUNT_TYPE_DESCR
 ACCOUNT_GRP
 ACCOUNT_GRP_DESCR
 ACCOUNT_GRP_SRC_USE_TYPE
 ACCOUNT_GRP_SRC_USE
 ACCOUNT_GRP_SRC_USE_DESCR
 ACCOUNT_GRP_GASB
 ACCOUNT_GRP_GASB_DESCR
 ACCOUNT_GRP_SPON_PROJ
 ACCOUNT_GRP_SPON_PROJ_DESCR
 ACCOUNT_GRP_SP_VOL_RES
 ACCOUNT_GRP_SP_VOL_RES_DESCR
 ACCOUNT_GRP_ISR_BUDGET
 ACCOUNT_GRP_ISR_BUDGET_DESCR
 ACCOUNT_GRP_MED_SCH
 ACCOUNT_GRP_MED_SCH_DESCR
 ACCOUNT_DESCRLONG

CURR_FUND_VW

FUND_CODE
 FUND_EFFDT
 FUND_EFF_STATUS
 FUND_DESCR
 FUND_GRP
 FUND_GRP_DESCR

CURR_FN_DEPT_VW

DEPTID
 DEPT_EFFDT
 DEPT_EFF_STATUS
 DEPT_DESCR
 EMPLID
 DEPT_GRP
 DEPT_GRP_DESCR
 DEPT_GRP_VP_AREA
 DEPT_GRP_VP_AREA_DESCR
 DEPT_GRP_CAMPUS
 DEPT_GRP_CAMPUS_DESCR
 DEPT_BUD_SEQ
 DEPT_BUD_SEQ_DESCR

CURR_PROGRAM_VW

PROGRAM_CODE
 PROGRAM_EFFDT
 PROGRAM_EFF_STATUS
 PROGRAM_DESCR

CURR_CLASS_CF_VW

CLASS
 CLASS_EFFDT
 CLASS_EFF_STATUS
 CLASS_DESCR
 CLASS_GRP
 CLASS_GRP_DESCR

PERSONAL_DATA

EMPLID
 PERSON_NAME
 PERSON_UNIQNAME
 PERSON_ADDRESS1
 PERSON_ADDRESS2
 PERSON_ADDRESS3
 PERSON_ADDRESS4
 PERSON_ZIP
 PERSON_COUNTRY
 PERSON_PHONE

CURR_PROJECT_GRANT_VW

PROJECT_GRANT
 PROJECT_GRANT_EFFDT
 PROJECT_GRANT_EFF_STATUS
 PROJECT_GRANT_TITLE
 PROJECT_GRANT_TYPE
 MINORITY_SUB
 PROJ_GRANT_STATUS
 PROJECT_GRANT_START_DT
 PROJECT_GRANT_END_DT
 INITIAL_FUND_CODE
 INITIAL_DEPTID
 PROJ_GRT_BUD_PERIOD_START_DT
 PROJ_GRT_BUD_PERIOD_END_DT
 PROJ_GRT_DIR_CNTCT_EMPLID
 PROJ_GRT_DIR_CNTCT_NAME
 SINGLE_ADMIN_CNTCT_EMPLID
 SINGLE_ADMIN_CNTCT_NAME
 FIN_OPS_CNTCT_CD
 FIN_OPS_CNTCT_EMPLID
 FIN_OPS_CNTCT_NAME
 DRDA_CNTCT_EMPLID
 DRDA_CNTCT_NAME
 SPONSOR
 SPONSOR_DESCR100
 SPONSOR_TYPE
 SPONSOR_TYPE_DESCR
 SPONSOR_CLASS
 SPONSOR_CLASS_DESCR
 SPONSOR_AWARD
 SPONSOR_DOC_NBR
 PAYMENT_TYPE
 LOC_FUNDED
 CFDA_NBR
 DRDA_NBR
 PARENT_PROJ_GRANT
 IC_BASIS
 IC_RATE_PCT
 CLASS
 PROGRAM_CODE
 PROJ_GRT_BILLED_BY
 BILL_SPONSOR
 BILL_SPONSOR_DESCR100
 SUB_CONTRACT_AWARDEE
 SUB_CONTRACT_AWARDEE_DESCR100
 BUDG_MUST_EQUAL_REV
 REPORTING_BUDGET_AMT
 ISR_REPORT_GRP
 ISR_REPORT_GRP_DESCR
 ISR_REPORT_SUBGRP
 ISR_REPORT_SUBGRP_DESCR

Historical Chartfields and Conversion Chartfield

ACCOUNT_TBL

ACCOUNT
ACCOUNT_EFFDT
 ACCOUNT_EFF_STATUS
 ACCOUNT_DESCR
 ACCOUNT_TYPE
 ACCOUNT_TYPE_DESCR
 ACCOUNT_GRP
 ACCOUNT_GRP_DESCR
 ACCOUNT_GRP_SRC_USE_TYPE
 ACCOUNT_GRP_SRC_USE
 ACCOUNT_GRP_SRC_USE_DESCR
 ACCOUNT_GRP_SPON_PROJ
 ACCOUNT_GRP_SPON_PROJ_DESCR
 ACCOUNT_GRP_SP_VOL_RES
 ACCOUNT_GRP_SP_VOL_RES_DESCR
 ACCOUNT_GRP_ISR_BUDGET
 ACCOUNT_GRP_ISR_BUDGET_DESCR
 ACCOUNT_GRP_MED_SCH
 ACCOUNT_GRP_MED_SCH_DESCR
 ACCOUNT_DESCR_LONG

FUND_TBL

FUND_CODE
FUND_EFFDT
 FUND_EFF_STATUS
 FUND_DESCR
 FUND_GRP
 FUND_GRP_DESCR

PROJECT_GRANT_TBL

PROJECT_GRANT
PROJECT_GRANT_EFFDT
 PROJECT_GRANT_EFF_STATUS
 PROJECT_GRANT_TITLE
 PROJECT_GRANT_TYPE
 MINORITY_SUB
 PROJ_GRANT_STATUS
 PROJECT_GRANT_START_DT
 PROJECT_GRANT_END_DT
 INITIAL_FUND_CODE
 INITIAL_DEPTID
 PROJ_GRT_BUD_PERIOD_START_DT
 PROJ_GRT_BUD_PERIOD_END_DT
 PROJ_GRT_DIR_CNTCT_EMPLID
 PROJ_GRT_DIR_CNTCT_NAME
 SINGLE_ADMIN_CNTCT_EMPLID
 SINGLE_ADMIN_CNTCT_NAME
 FIN_OPS_CNTCT_CD
 FIN_OPS_CNTCT_EMPLID
 FIN_OPS_CNTCT_NAME
 DRDA_CNTCT_EMPLID
 DRDA_CNTCT_NAME
 SPONSOR
 SPONSOR_DESCR100
 SPONSOR_TYPE
 SPONSOR_TYPE_DESCR
 SPONSOR_CLASS
 SPONSOR_CLASS_DESCR
 SPONSOR_AWARD
 SPONSOR_DOC_NBR
 PAYMENT_TYPE
 LOC_FUNDED
 CFDA_NBR
 DRDA_NBR
 PARENT_PROJ_GRANT
 IC_BASIS
 IC_RATE_PCT
 CLASS
 PROGRAM_CODE
 PROJ_GRT_BILLED_BY
 BILL_SPONSOR
 BILL_SPONSOR_DESCR100
 SUB_CONTRACT_AWARDEE
 SUB_CONTRACT_AWARDEE_DESCR100
 BUDG_MUST_EQUAL_REV
 REPORTING_BUDGET_AMT
 ISR_REPORT_GRP
 ISR_REPORT_GRP_DESCR
 ISR_REPORT_SUBGRP
 ISR_REPORT_SUBGRP_DESCR

FN_DEPT_TBL

DEPTID
DEPT_EFFDT
 DEPT_EFF_STATUS
 DEPT_DESCR
 EMPLID
 DEPT_GRP
 DEPT_GRP_DESCR
 DEPT_GRP_VP_AREA
 DEPT_GRP_VP_AREA_DESCR
 DEPT_GRP_CAMPUS
 DEPT_GRP_CAMPUS_DESCR
 DEPT_BUD_SEQ
 DEPT_BUD_SEQ_DESCR







PROGRAM_TBL

PROGRAM_CODE
PROGRAM_EFFDT
 PROGRAM_EFF_STATUS
 PROGRAM_DESCR

CLASS_CF_TBL

CLASS
CLASS_EFFDT
 CLASS_EFF_STATUS
 CLASS_DESCR
 CLASS_GRP
 CLASS_GRP_DESCR

Legend

Underline = Key Field
 = One to One
 = One to Many
 = Many to Many
 = Outer Join
 = Secured Table
 = Check Status Table for refresh date

CNVCHARTFD

SHORTCODE
 SHORTCODE_DESCR50
 SHORTCODE_STATUS
 SHORTCODE_STATUS_DESCRSHORT
 FUND_CODE
 DEPTID
 PROGRAM_CODE
 CLASS
 PROJECT_GRANT
 CLASS2
 ACCOUNT

Accounts Receivable and Billing Tables Description

The Accounts Receivable and Billing Tables Description provides the following information for each table in the U-M Data Warehouse Accounts Receivable and Billing data set:

<i>Physical Table Name</i>	Name for the table you can use in SQL queries.
<i>Logical Table Name</i>	Descriptive name of the table.
<i>Data Set Locations</i>	The names of the data sets in which the table resides.
<i>Table Description</i>	Description of the table.

The tables are ordered alphabetically by table physical name.

Physical Table Name	Logical Table Name	Data Set Locations	Table Description
ACCOUNT_TBL	Account	M_GLDW1	Historical characteristics of accounts, such as account name, type and associated group. Contains all accounts except budget offset accounts.
AR_ITEM	Accounts Receivable Item	M_GLDW1	Information about an accounts receivable item, an item is the receivable in the Accounts Receivable system.
AR_ITEM_ACTIVITY	Accounts Receivable Activity	M_GLDW1	Information about the historical activity of an accounts receivable item.
AR_ITEM_ACTIVITY_OWNER	Accounts Receivable Activity Owner	M_GLDW1	Information about the chartfields and amounts associated with the historical activity of an accounts receivable item. This table is used to report which chartfields are responsible for a specific amount of an activity on the receivable. This responsibility is determined by the item's original chartfield distribution.
AR_ITEM_DST	Accounts Receivable Item Distribution	M_GLDW1	Information about the distribution of an accounts receivable item's activity amount across chartfields. Information in this table is limited to items created directly in Accounts Receivable or items that had select activity in Accounts Receivable.
AR_ITEM_OWNER	Accounts Receivable Item Owner	M_GLDW1	Information about the chartfields and amounts associated with an accounts receivable item. This table is used to report which chartfields are responsible for a specific amount of the receivable. This responsibility is determined by the item's original chartfield distribution.
BILL_ACCT_ENTRY	Bill Account Entry	M_GLDW1	Information about the distribution of an invoice line's amount across chartfields. Information in this table includes the original chartfield distribution of an accounts receivable item that originated in Billing.
BILL_HDR	Bill Header	M_GLDW1	Information about an invoice. An invoice originates in Billing, but is later turned into an accounts receivable item.
BILL_LINE	Bill Line	M_GLDW1	Information about the various lines that make up an invoice.

Physical Table Name	Logical Table Name	Data Set Locations	Table Description
CAL_DETP_TBL	Calendar	M_GLDW1	Begin and end calendar dates that define the University's fiscal year and accounting periods.
CLASS_CF_TBL	Class Chartfield	M_GLDW1	Historical characteristics of the chartfield class, such as name and associated groups.
CNVCHARTFD	Convert Account to Chartfields	M_GLDW1	Converts all legacy accounts to chartfields.
CURR_ACCOUNT_VW	Current Account View	M_GLDW1	Current characteristics of accounts, such as account name, type and associated groups.
CURR_CLASS_CF_VW	Current Class Chartfield View	M_GLDW1	Current characteristics of the chartfield class, such as name and associated group.
CURR_FN_DEPT_VW	Current Financial Department View	M_GLDW1	Current characteristics of departments such as department name and associated groups.
CURR_FUND_VW	Current Fund View	M_GLDW1	Current characteristics of fund codes, such as name and associated groups.
CURR_PROGRAM_VW	Current Program View	M_GLDW1	Current characteristics of program codes, such as description.
CURR_PROJECT_GRANT_VW	Current Project/Grant View	M_GLDW1	Current characteristics of project/grants, such as title, amount and type.
CUSTOMER	Customer	M_GLDW1	Information about customers including name and current primary billing address.
FN_DEPT_TBL	Financial Department	M_GLDW1	Historical characteristics of departments such as department name.
FUND_TBL	Fund	M_GLDW1	Historical characteristics of fund codes, such as name and associated groups.
GLSTATUS	General Ledger Status	M_GLDW1	Status of the update schedule for the Accounts Receivable, General Ledger and Procurement tables.
JRNL_HEADER	Journal Header	M_GLDW1	Header data about specific journals.
JRNL_LN	Journal Line	M_GLDW1	Lines or detail lines for journals including chartfields and amounts.
PERSONAL_DATA	Personal Data	M_GLDW1	Personal and demographic data about an employee including name and work address.
PRJ_GRT_RPDTL	Project Grant Report Detail Lines	M_GLDW1	Information about various internal and external report and billings detail required for sponsored projects, such as Report Due Date, status and contact information.
PRJ_GRT_RPTS	Project Grant Reports	M_GLDW1	Information about various external reports for sponsored projects.

Physical Table Name	Logical Table Name	Data Set Locations	Table Description
PROGRAM_TBL	Program	M_GLDW1	Historical characteristics of program codes, such as description.
PROJECT_GRANT_TBL	Project/Grant	M_GLDW1	Historical characteristics of project/grants, such as title, amount and type.

Accounts Receivable and Billing Data Element Dictionary

The Accounts Receivable and Billing Data Element Dictionary contains all the elements found in the U-M Data Warehouse Accounts Receivable and Billing Tables, ordered alphabetically by element name. Here is a description of the information that the dictionary provides for each element:

<i>Physical Element Name</i>	Name for the element you can use in SQL queries.	
<i>Logical Element Name</i>	Descriptive name of the element.	
<i>Format Type</i>	Type of value of the element (for example: character, number, or date). <i>Note:</i> If the format type for an element is character or date, you must enclose the variable value in single quotes when entering queries.	
<i>Format Length</i>	Total length of the element. For data elements in the format “number,number”, the first number represents the total length of the element. The second number represents the number of digits to the right of the decimal.	
<i>Data Sets</i>	The names of the data sets that contain the element.	
<i>Table Locations</i>	The names of the tables in which the element is located.	
<i>Security Code</i>	The level of security imposed on the element. Values are:	
	P	Public data Data with no access restriction that may be released to the general public.
	R	Private/ Confidential data Data available to University employees who need to access these data to perform their official University duties. Unless otherwise noted, all institutional data is designated as Private/Confidential.
	S	Sensitive data Data available only to University employees who have specific authorization for access. Never release sensitive data in a manner that enables identifying data element values with a specific person or persons.
<i>Element Definition</i>	Description of the element.	
<i>Examples of Valid Values</i>	Either the specific codes that are valid for the element, or samples of the kind of values for the element.	

Physical Element Name	Logical Element Name	Format Type	Format Length	Data Set	Table Locations	Security Code	Element Definition	Examples of Valid Values
ACCOUNT	Account Code	Character	6	M_GLDW1	ACCOUNT_TBL AR_ITEM_DST BILL_ACCT_ENTRY CNVCHARTFD JRNL_LN	R	A code used to record and summarize financial transactions such as assets, liabilities, fund balances, revenues, expenses, statistics or budget accounts.	122100 = Accounts & Notes Receivable; 615020 = Postage/Mailing; SHR = Investment Shares
ACCOUNT_DESCR	Account Name	Character	30	M_GLDW1	ACCOUNT_TBL CURR_ACCOUNT_VW	R	The title assigned to record and summarize financial transactions such as assets, liabilities, fund balances, revenues, expenses, statistics or budget accounts.	Accounts & Notes Receivable; Postage/Mailing; Investment Shares
ACCOUNT_DESCRLONG	Account Long Description	Long	2000	M_GLDW1	ACCOUNT_TBL CURR_ACCOUNT_VW	R	A long textual description of the code used to record and summarize financial transactions such as assets, liabilities, fund balances, revenues, expenses, statistics or budget accounts.	Accounts & Notes Receivable; For all postage expenses. Used for postage related expenses, including stamps
ACCOUNT_EFF_STATUS	Account Effective Status Code	Character	1	M_GLDW1	ACCOUNT_TBL CURR_ACCOUNT_VW	R	A code specifying the current status of a U of M account.	A = Active; I = Inactive
ACCOUNT_EFFDT	Account Effective Date	Date		M_GLDW1	ACCOUNT_TBL CURR_ACCOUNT_VW	R	The date on which the account status becomes effective.	07/01/2001
ACCOUNT_GRP	Account Group Code	Character	20	M_GLDW1	ACCOUNT_TBL CURR_ACCOUNT_VW	R	A code used to group accounts. Note: sourced from the UM_ACCT_GROUP tree.	BANK_CASH; GENERAL_EXPENSES
ACCOUNT_GRP_DESCR	Account Group Description	Character	30	M_GLDW1	ACCOUNT_TBL CURR_ACCOUNT_VW	R	A textual description of the code used to group accounts.	Bank Cash; General Expenses
ACCOUNT_GRP_GASB	Account Group Governmental Accounting Standard Board Code	Character	20	M_GLDW1	ACCOUNT_TBL CURR_ACCOUNT_VW	R	A code used to group accounts for U of M to meet financial reporting standards. Note: sourced from the UM_ACCT_GASB tree.	SCHOLAR_AND_FELLOWSHIP = Scholarships and Fellowships; ACCOUNTS_PAYABLE = Accounts Payable; OTHER_REV_EXP = Other

Physical Element Name	Logical Element Name	Format Type	Format Length	Data Set	Table Locations	Security Code	Element Definition	Examples of Valid Values
ACCOUNT_GRP_GASB_DESCR	Account Group Governmental Accounting Standard Board Description	Character	30	M_GLDW1	ACCOUNT_TBL CURR_ACCOUNT_VW	R	A textual description of the code used to group accounts for U of M to meet financial reporting standards.	Scholarships and Fellowships; Accounts Payable; Other
ACCOUNT_GRP_ISR_BUDGET	Account Group Institute for Social Research (ISR) Budget Code	Character	6	M_GLDW1	ACCOUNT_TBL CURR_ACCOUNT_VW	R	A code used to associate expense accounts with higher-level budgetary accounts used for ISR Budget. Note: sourced from the BUD_TRAN_ACCT_ISR tree.	911100 = Administrative Salaries; 911550 = Respondents/Subjects; 911900 = Research Supplies & Services
ACCOUNT_GRP_ISR_BUDGET_DESCR	Account Group Institute for Social Research (ISR) Budget Description	Character	30	M_GLDW1	ACCOUNT_TBL CURR_ACCOUNT_VW	R	A textual description of the code used to associate expense accounts with higher-level budgetary accounts used for ISR Budgets.	Administrative Salaries; Respondents/Subjects; Research Supplies & Services
ACCOUNT_GRP_MED_SCH	Account Group Medical School Code	Character	20	M_GLDW1	ACCOUNT_TBL CURR_ACCOUNT_VW	R	A code used to group revenue and expense accounts that are similar in nature, and represent the Medical School's financial line descriptions from the MEDSCH_ACCT_RNG2 tree.	MS_CLINIC_EXPENSE = Clinic Expenses; MS_MALPRACTICE = Malpractice; MS_PRIMARY_CARE_SUPP = Primary Care Support
ACCOUNT_GRP_MED_SCH_DESCR	Account Group Medical School Description	Character	30	M_GLDW1	ACCOUNT_TBL CURR_ACCOUNT_VW	R	A textual description of the code used to group revenue and expense accounts that are similar in nature, and represent the Medical School's financial line descriptions from the MEDSCH_ACCT_RNG2 tree.	Clinic Expenses; Malpractice; Primary Care Support
ACCOUNT_GRP_SP_VOL_RES	Account Group Sponsored Programs Volume Research Code	Character	20	M_GLDW1	ACCOUNT_TBL CURR_ACCOUNT_VW	R	A code used to group accounts by sponsored research. Note: sourced from the SP_VOL_RESRCH_ACCT tree.	SAL_AND_WAGES = Salaries and Wages; TRANSFERS_AND_DIST = Transfers and Distributions; INDIRECT_COST = Indirect Cost

Physical Element Name	Logical Element Name	Format Type	Format Length	Data Set	Table Locations	Security Code	Element Definition	Examples of Valid Values
ACCOUNT_GRP_SP_VOL_RES_DESCR	Account Group Sponsored Programs Volume Research Description	Character	30	M_GLDW1	ACCOUNT_TBL CURR_ACCOUNT_VW	R	A textual description of the code used to group accounts by sponsored research.	Salaries and Wages; Transfers and Distributions; Indirect Cost
ACCOUNT_GRP_SPON_PROJ	Account Group Sponsored Project Code	Character	20	M_GLDW1	ACCOUNT_TBL CURR_ACCOUNT_VW	R	A code used to associate expense accounts with higher-level budgetary accounts used for sponsored projects. Note: sourced from the BUD_TRAN_ACCT_WP tree.	911000 = Research Salaries; 911650 = Student Aid; 912500 = Travel Domestic
ACCOUNT_GRP_SPON_PROJ_DESCR	Account Group Sponsored Project Description	Character	30	M_GLDW1	ACCOUNT_TBL CURR_ACCOUNT_VW	R	A textual description of the code used to associate expense accounts with higher-level budgetary accounts used for sponsored projects.	Research Salaries; Student Aid; Travel Domestic
ACCOUNT_GRP_SRC_USE	Account Group Source Use Code	Character	20	M_GLDW1	ACCOUNT_TBL CURR_ACCOUNT_VW	R	A code used to group accounts based on the Source/Use model. Note: sourced from the UM_SRC_USE_ACCT tree.	FED GRANTS/ CONTRACTS; GIFTS; FACULTY SALARIES
ACCOUNT_GRP_SRC_USE_DESCR	Account Group Source Use Description	Character	30	M_GLDW1	ACCOUNT_TBL CURR_ACCOUNT_VW	R	A textual description of the code used to group accounts based on the Source/Use model.	Federal Grants/Contracts; Gifts; Faculty Salaries
ACCOUNT_GRP_SRC_USE_TYPE	Account Group Source Use Type Code	Character	10	M_GLDW1	ACCOUNT_TBL CURR_ACCOUNT_VW	R	A code indicating whether an account is a source (revenue) or a use (expense). This is used for reporting to the Office of Budget Planning. Note: sourced from the UM_SRC_USE_ACCT tree.	Source; Use
ACCOUNT_TYPE	Account Type Code	Character	1	M_GLDW1	ACCOUNT_TBL CURR_ACCOUNT_VW	R	A code used to indicate the type of account.	A = Asset; E = Expense
ACCOUNT_TYPE_DESCR	Account Type Description	Character	30	M_GLDW1	ACCOUNT_TBL CURR_ACCOUNT_VW	R	A textual description of the code used to indicate the type of account.	Asset; Expense
ACCOUNTING_DT	Accounting Date	Date		M_GLDW1	AR_ITEM AR_ITEM_ACTIVITY AR_ITEM_DST BILL_ACCT_ENTRY BILL_HDR	R	The accounting date associated with the transaction. Used in the validation and execution of budgeting and transaction postings.	01/01/1999

Physical Element Name	Logical Element Name	Format Type	Format Length	Data Set	Table Locations	Security Code	Element Definition	Examples of Valid Values
ACCOUNTING_PERIOD	Accounting Period Code	Number	3	M_GLDW1	AR_ITEM_DST BILL_ACCT_ENTRY CAL_DETP_TBL JRNL_HEADER	R	A code used to identify the university accounting period which represents a fiscal calendar month or an adjustment period.	3; 4; 9; 998; 999
ACCTG_PERIOD_BEGIN_DT	Accounting Period Start Date	Date		M_GLDW1	CAL_DETP_TBL	R	The date on which an accounting period begins. The beginning date is in the format MM/DD/YYYY.	01/01/1999
ACCTG_PERIOD_END_DT	Accounting Period End Date	Date		M_GLDW1	CAL_DETP_TBL	R	The date on which an accounting period ends. The ending date is in the format MM/DD/YYYY.	02/28/1999
ACTIVITY_POST_DT	Activity Post Date	Date		M_GLDW1	AR_ITEM_ACTIVITY	R	The date on which an activity for an accounts receivable item was posted.	11/06/2003
AR_AGING_CATEGORY	Accounts Receivable Aging Category Code	Character	2	M_GLDW1	AR_ITEM	R	A code representing the accounts receivable aging report grouping for open accounts receivable items..	01 = Current; 02 = 31-60; 03 = 61 – 90; 04 = 91 – 120; 05 = 121-150; 06 = 151-180
AR_AGING_CATEGORY_DESCR	Accounts Receivable Aging Category Description	Character	30	M_GLDW1	AR_ITEM	R	A textual description of the code representing the accounts receivable aging report grouping for open accounts receivable items.	Current; 31-60; 61 – 90; 91 – 120; 121-150; 151-180
AR_COLLECTION_DT	Accounts Receivable Collection Date	Date		M_GLDW1	AR_ITEM	R	The date on which an accounts receivable item was assigned to a collection agency.	null; 06/22/2005; 07/07/2006
AR_COLLECTION_STATUS	Accounts Receivable Collection Status Code	Character	3	M_GLDW1	AR_ITEM	R	A code specifying the assigned collection agency of an accounts receivable item. Unassigned items will have no code.	NES = National Enterprise System; TRG = TRG Collection Service; UPS = Universal Professional Svcs

Physical Element Name	Logical Element Name	Format Type	Format Length	Data Set	Table Locations	Security Code	Element Definition	Examples of Valid Values
AR_COLLECTION_STATUS_DESCR	Accounts Receivable Collection Status Description	Character	30	M_GLDW1	AR_ITEM	R	A textual description of the code specifying the assigned collection agency of an accounts receivable item. Unassigned items will have no description.	National Enterprise System; TRG Collection Service; Universal Professional Svcs
AR_COLLECTOR_CD	Accounts Receivable Collector Code	Character	8	M_GLDW1	AR_ITEM	R	A code representing the collector of an accounts receivable item.	MERIT = Merit Collector; R02 = Barbara Marie de la Garza; S06 = Joseph L. Smith
AR_COLLECTOR_NAME1	Accounts Receivable Collector Name	Character	40	M_GLDW1	AR_ITEM	R	A textual description of the code representing the collector of an accounts receivable item.	Merit Collector; Barbara Marie de la Garza; Joseph L. Smith
AR_ITEM	Accounts Receivable Item	Character	30	M_GLDW1	AR_ITEM AR_ITEM_ACTIVITY AR_ITEM_DST AR_ITEM_OWNER AR_ITEM_ACTIVITY_OWNER	R	A system assigned number used to uniquely identify a specific accounts receivable item. Items originating in Billing will use the number assigned to the invoice in Billing	1000001; 1001234; 567243
AR_ITEM_ACT_ADDL_REASON	Accounts Receivable Item Activity Additional Reason Code	Character	10	M_GLDW1	AR_ITEM_ACTIVITY	R	A code representing an additional reason a collector may assign to an activity related to an accounts receivable item.	BADDEBT = WO Dept-Bad Debt/Uncollectible; PRDUCTLN = GNLNS payment via pay deduct; DUPPAY = WO Refund – Duplicate Payment
AR_ITEM_ACT_ADDL_REASON_DESCR	Accounts Receivable Item Activity Additional Reason Description	Character	30	M_GLDW1	AR_ITEM_ACTIVITY	R	A textual description of the code representing an additional reason a collector may assign to an activity related to an accounts receivable item.	WO Dept-Bad Debt/Uncollectible; GNLNS payment via pay deduct; WO Refund – Duplicate Payment

Physical Element Name	Logical Element Name	Format Type	Format Length	Data Set	Table Locations	Security Code	Element Definition	Examples of Valid Values
AR_ITEM_ACT_ENTRY_AMT	Accounts Receivable Item Activity Entry Amount	Signed Number	15,2	M_GLDW1	AR_ITEM_ACTIVITY	R	The dollar amount of an activity entry related to an accounts receivable item.	-944,652.62; 137.32; 11,033.98
AR_ITEM_ACT_ENTRY_REASON	Accounts Receivable Item Activity Entry Reason Code	Character	5	M_GLDW1	AR_ITEM_ACTIVITY	R	A code representing the reason for an activity related to an accounts receivable item. Existence and values of this code are contingent on the Entry Type.	ADJ = Adjustment; FORD = Ford Surcharge WO; blank
AR_ITEM_ACT_ENTRY_REASON_DESCR	Accounts Receivable Item Activity Entry Reason Description	Character	30	M_GLDW1	AR_ITEM_ACTIVITY	R	A textual description of the code representing the reason for an activity related to an accounts receivable item. Existence and values of this description are contingent on the Entry Type.	Adjustment; Ford Surcharge WO; blank
AR_ITEM_ACT_ENTRY_TYPE	Accounts Receivable Item Activity Entry Type Code	Character	5	M_GLDW1	AR_ITEM_ACTIVITY	R	A code representing the type of activity related to an accounts receivable item.	CM = Credit Memo; IN = Invoice; PY = Payment
AR_ITEM_ACT_ENTRY_TYPE_DESCR	Accounts Receivable Item Activity Entry Type Description	Character	30	M_GLDW1	AR_ITEM_ACTIVITY	R	A textual description of the code representing the type of activity related to an accounts receivable item.	Credit Memo; Invoice; Payment
AR_ITEM_BAL_AMT	Accounts Receivable Item Balance Amount	Signed Number	15,2	M_GLDW1	AR_ITEM	R	The dollar amount of the balance for an accounts receivable item.	-681.50; 24.48; 18,071.60
AR_ITEM_DST_SEQ_NUM	Accounts Receivable Item Distribution Sequence Number	Number	3	M_GLDW1	AR_ITEM_DST	R	A system assigned, sequential number used to define the accounting distributions for the accounts receivable item.	1; 3; 4
AR_ITEM_DT	Accounts Receivable Item Date	Date		M_GLDW1	AR_ITEM	R	The date assigned to an accounts receivable item. This date is more commonly known as an Invoice Date, which is the term used in Billing for items that originate as invoices.	09/30/1992; 03/16/2005; 09/01/2006
AR_ITEM_DUE_DAYS	Accounts Receivable Item Due Days	Number	3	M_GLDW1	AR_ITEM	R	A grace period in days that a collector may allow the customer to pay an accounts receivable item beyond the due date. This grace period is a factor in calculation of the Aging category.	0; 2; 5

Physical Element Name	Logical Element Name	Format Type	Format Length	Data Set	Table Locations	Security Code	Element Definition	Examples of Valid Values
AR_ITEM_DUE_DT	Accounts Receivable Item Due Date	Date		M_GLDW1	AR_ITEM	R	The date on which an accounts receivable item is due.	10/30/1992; 12/05/2004; 10/01/2013
AR_ITEM_ENTRY_REASON	Accounts Receivable Item Entry Reason Code	Character	5	M_GLDW1	AR_ITEM	R	A code representing the reason for the original activity of an accounts receivable item. Existence and values of this code are contingent on the Entry Type.	ADJ = Adjustment; FINAL = Final; REG = Regular blank
AR_ITEM_ENTRY_REASON_DESCR	Accounts Receivable Item Entry Reason Description	Character	30	M_GLDW1	AR_ITEM	R	A textual description of the code representing the reason for the original activity of an accounts receivable item. Existence and values of this description are contingent on the Entry Type.	Adjustment; Final; Regular blank
AR_ITEM_ENTRY_TYPE	Accounts Receivable Item Entry Type Code	Character	5	M_GLDW1	AR_ITEM	R	A code representing the type of the original activity of an accounts receivable item	CRCON = Credit Conversion; IN = Invoice; INCON = Invoice Conversion
AR_ITEM_ENTRY_TYPE_DESCR	Accounts Receivable Item Entry Type Description	Character	30	M_GLDW1	AR_ITEM	R	A textual description of the code representing the type of the original activity of an accounts receivable item.	Credit Conversion; Invoice; Invoice Conversion
AR_ITEM_LINE	Accounts Receivable Item Line Number	Number	6	M_GLDW1	AR_ITEM AR_ITEM_ACTIVITY AR_ITEM_DST AR_ITEM_OWNER	R	A sequential number used to uniquely identify each line of an accounts receivable item. Current university practice is not to split items so only one value will be found.	0
AR_ITEM_ORIG_AMT	Accounts Receivable Amount	Signed Number	15,2	M_GLDW1	AR_ITEM	R	The original dollar amount of an accounts receivable item.	-280.00; 945.86; 2,920,183.00
AR_ITEM_RECON_FLG	Account Receivable Reconciliation Flag	Character	1	M_GLDW1	AR_ITEM_DST	R	A code indicating whether an accounts receivable accounting line has been reconciled or not.	Y = Yes; N = No
AR_ITEM_RECON_LAST_UPDATE_BY	Account Receivable Reconciliation Last Update By Operator Identification Code	Character	30	M_GLDW1	AR_ITEM_DST	R	The operator identification of the last person to have reconciled or to have added a note to the accounts receivable accounting line.	RKLAFFKE; DSELL

Physical Element Name	Logical Element Name	Format Type	Format Length	Data Set	Table Locations	Security Code	Element Definition	Examples of Valid Values
AR_ITEM_RECON_LAST_UPDATE_DT	Account Receivable Reconciliation Last Update Date	Date		M_GLDW1	AR_ITEM_DST	R	The date on which the accounts receivable reconciliation or note was last updated.	01/10/1999
AR_ITEM_RECON_NOTE	Account Receivable Reconciliation Note	Character	254	M_GLDW1	AR_ITEM_DST	R	The reconciliation notes related to an accounts receivable accounting line.	Credit memo to be processed.
AR_ITEM_SEQ_NUM	Accounts Receivable Item Sequence Number	Number	3	M_GLDW1	AR_ITEM_ACTIVITY AR_ITEM_DST AR_ITEM_ACTIVITY_OWNER	R	A sequential number used to uniquely identify each activity related to an accounts receivable item.	1; 13; 56
AR_ITEM_STATUS	Accounts Receivable Item Status Code	Character	1	M_GLDW1	AR_ITEM	R	A code specifying the current status of an accounts receivable item.	C = Closed; O = Open
AR_ITEM_STATUS_DESCRSHORT	Accounts Receivable Item Status Short Description	Character	10	M_GLDW1	AR_ITEM	R	An abbreviated textual description of the code specifying the current status of an accounts receivable item.	Closed; Open
AR_LAST_ACTIVITY_ITEM_SEQ_NUM	Accounts Receivable Last Activity Item Sequence Number	Number	3	M_GLDW1	AR_ITEM	R	The sequential number of the latest activity to take place for an accounts receivable item.	1; 35; 56
AR_LAST_ACTIVITY_POST_DT	Accounts Receivable Last Activity Post Date	Date		M_GLDW1	AR_ITEM	R	The date on which the latest activity for an accounts receivable item was posted.	11/06/2003; 04/12/2005; 08/10/2006
AR_LAST_STATEMENT_DT	Accounts Receivable Last Statement Date	Date		M_GLDW1	AR_ITEM	R	The date on which the latest statement was generated for correspondence with the customer about open accounts receivable items.	02/26/2004; 06/20/2005; 07/10/2006; null
AR_PYMNT_TERMS_CD	Accounts Receivable Terms Code	Character	5	M_GLDW1	AR_ITEM BILL_HDR	R	A code representing the payment terms associated with an accounts receivable item.	21ON3 = 2% 10 Days, Net; AB3ON = 30 Net; AB45N = 45 Days Net (Foreign)
AR_PYMNT_TERMS_DESCR50	Accounts Receivable Terms Description	Character	50	M_GLDW1	AR_ITEM BILL_HDR	R	A textual description of the code representing the payment terms associated with an accounts receivable item.	2% 10 Days, Net; 30 Net; 45 Days Net (Foreign)
BILL_ACCT_RECON_FLG	Bill Account Reconciliation Flag	Character	1	M_GLDW1	BILL_ACCT_ENTRY	R	A code indicating whether a bill accounting line has been reconciled or not.	Y = Yes; N = No

Physical Element Name	Logical Element Name	Format Type	Format Length	Data Set	Table Locations	Security Code	Element Definition	Examples of Valid Values
BILL_ACCT_RECON_LAST_UPDATE_BY	Bill Account Reconciliation Last Update By Operator Identification Code	Character	30	M_GLDW1	BILL_ACCT_ENTRY	R	The operator identification of the last person to have reconciled or to have added a note to the bill accounting line.	RKLAFFKE; DSELL
BILL_ACCT_RECON_LAST_UPDATE_DT	Bill Account Reconciliation Last Update Date	Date		M_GLDW1	BILL_ACCT_ENTRY	R	The date on which the bill reconciliation or note was last updated.	01/10/1999
BILL_ACCT_RECON_NOTE	Bill Account Reconciliation Note	Character	254	M_GLDW1	BILL_ACCT_ENTRY	R	The reconciliation notes related to a bill accounting line.	Credit memo to be processed.
BILL_CYCLE_DESCR	Bill Cycle Description	Character	30	M_GLDW1	BILL_HDR	R	A textual description of the code representing the cycle type of an invoice.	Automatically Produced; Quarterly – January; Priority 3, Third Week
BILL_CYCLE_ID	Bill Cycle Identification Code	Character	10	M_GLDW1	BILL_HDR	R	A code representing the cycle type of an invoice.	AUTO = Automatically Produced; JQ = Quarterly – January; P3 = Priority 3, Third Week
BILL_FROM_DT	Bill From Date	Date		M_GLDW1	BILL_HDR	R	The date on which a range of dates for an invoice begins if the invoice has a range of dates.	09/01/2005; 01/01/2006; null
BILL_INVOICE_DT	Bill Invoice Date	Date		M_GLDW1	BILL_HDR	R	The date assigned to an invoice. This date is later used to help determine the due date once the invoice is created as an accounts receivable item.	04/15/2004; 10/24/2005; 07/11/2006
BILL_LINE_DESCR	Bill Line Description	Character	30	M_GLDW1	BILL_LINE	R	A textual description of an invoice line.	Amount due per attached; \$1,315.03, less 2%; #9-Annual Report – Phase III
BILL_LINE_DST_SEQ_NUM	Bill Line Distribution Sequence Number	Number	3	M_GLDW1	BILL_ACCT_ENTRY	R	A system assigned, sequential number used to define the accounting distributions for an invoice.	1; 3; 4

Physical Element Name	Logical Element Name	Format Type	Format Length	Data Set	Table Locations	Security Code	Element Definition	Examples of Valid Values
BILL_LINE_QTY	Bill Line Quantity	Signed Number	15,4	M_GLDW1	BILL_LINE	R	A number representing the quantity of a specific commodity which is requested on an invoice line.	1.0000; 3.0000; 4.0000
BILL_LINE_SEQ_NUM	Bill Line Sequence Number	Number	5	M_GLDW1	BILL_ACCT_ENTRY BILL_LINE	R	A sequential number used to uniquely identify each invoice line.	1; 5; 10
BILL_LINE_TYPE	Bill Line Type Code	Character	4	M_GLDW1	BILL_LINE	R	A code representing the type of an invoice line.	REV = Revenue Line
BILL_LINE_TYPE_DESCR	Bill Line Type Description	Character	30	M_GLDW1	BILL_LINE	R	A textual description of the code representing the type of an invoice line.	Revenue Line
BILL_LINE_UNIT_AMT	Bill Line Unit Amount	Signed Number	15,4	M_GLDW1	BILL_LINE	R	The dollar amount per commodity which is requested on an invoice line,	-2,920,183.0000; 3,579.0000; 2,440,000.0000
BILL_SOURCE_ID	Bill Source Identification Code	Character	10	M_GLDW1	BILL_HDR	R	A value indicating the source of an invoice.	CORPAY; GL-INT; ONLINE
BILL_SPONSOR	Billing Sponsor Code	Character	6	M_GLDW1	CURR_PROJECT_GRANT_VW PROJECT_GRANT_TBL	R	A code representing the awarding department.	288000 = Ford Motor Company; 573040 = Michigan, State of, Education, Department of; 895700 = Health and Human Services, Department of- National Institutes of Health
BILL_SPONSOR_DESCR100	Billing Sponsor Code Description	Character	100	M_GLDW1	CURR_PROJECT_GRANT_VW PROJECT_GRANT_TBL	R	A textual description of the code representing the awarding department.	Ford Motor Company; Michigan, State of, Education, Department of; Health and Human Services, Department of- National Institutes of Health

Physical Element Name	Logical Element Name	Format Type	Format Length	Data Set	Table Locations	Security Code	Element Definition	Examples of Valid Values
BILL_TO_DT	Bill To Date	Date		M_GLDW1	BILL_HDR	R	The date on which a range of dates for an invoice ends if the invoice has a range of dates.	09/30/2005; 11/30/2005; null
BILL_TYPE_DESCRSHORT	Bill Type Short Description	Character	10	M_GLDW1	BILL_HDR	R	An abbreviated textual description of the code representing the type of the bill.	Adjustment; General; Regular
BILL_TYPE_ID	Bill Type Identification Code	Character	3	M_GLDW1	BILL_HDR	R	A code representing the type of the bill.	ADJ = Adjustment; GEN = General; REG = Regular
BILLING_SPECIALIST_CD	Billing Specialist Code	Character	8	M_GLDW1	BILL_HDR	R	A code representing a billing specialist.	03 = Joseph L. Smith;; R03 = Barbara Marie de la Garza; T04 = William Boyd Washington
BILLING_SPECIALIST_NAME1	Billing Specialist Name One	Character	40	M_GLDW1	BILL_HDR	R	The name of a billing specialist.	Joseph L. Smith;; Barbara Marie de la Garza; William Boyd Washington
BUDG_MUST_EQUAL_REV	Budget Must Equal Revenue Code	Character	1	M_GLDW1	CURR_PROJECT_GRANT_VW PROJECT_GRANT_TBL	R	A code specifying that a budget must equal the incoming revenue.	Y = Yes; N = No
BUSINESS_UNIT	Business Unit Code	Character	5	M_GLDW1	AR_ITEM AR_ITEM_ACTIVITY AR_ITEM_ACTIVITY_OWNER AR_ITEM_DST AR_ITEM_OWNER BILL_ACCT_ENTRY BILL_HDR BILL_LINE	R	A code representing the highest organizational unit of an invoice or accounts receivable item	SPFED = Federal Sponsored Activity; GNPAY = General Receivables – Payroll; SPNON = Non Federal Sponsored Activity

Physical Element Name	Logical Element Name	Format Type	Format Length	Data Set	Table Locations	Security Code	Element Definition	Examples of Valid Values
BUSINESS_UNIT_DESCR	Business Unit Description	Character	30	M_GLDW1	AR_ITEM AR_ITEM_ACTIVITY AR_ITEM_ACTIVITY_OWNER AR_ITEM_DST AR_ITEM_OWNER BILL_ACCT_ENTRY BILL_HDR BILL_LINE	R	A textual description of the code representing the highest organizational unit of an invoice or accounts receivable item	Federal Sponsored Activity; General Receivables – Payroll; Non Federal Sponsored Activity
CAL_MONTH_CODE	Calendar Month Code	Character	2	M_GLDW1	CAL_DETP_TBL	R	A code representing the calendar month.	07 = July; 08 = August; 12 = December
CAL_MONTH_DESCR	Calendar Month Description	Character	30	M_GLDW1	CAL_DETP_TBL	R	The name of the calendar month.	July; August; December
CAL_YEAR	Calendar Year	Character	4	M_GLDW1	CAL_DETP_TBL	R	A number representing the year beginning January 1 and ending December 31 in the format of CCYY.	1998; 1999; 2000
CFDA_NBR	Catalog Of Federal Domestic Assistance Number Code	Number	5,3	M_GLDW1	CURR_PROJECT_GRANT_VW PROJECT_GRANT_TBL	R	A code designated by the Federal Government representing the type of grant awarded.	81.049; 93.864; 93.989
CLASS	Class Code	Character	5	M_GLDW1	AR_ITEM_DST BILL_ACCT_ENTRY CNVCHARTFD CLASS_CF_TBL CURR_CLASS_CF_VW CURR_PROJECT_GRANT_VW JRNL_LN PROJECT_GRANT_TBL	R	A code used to group related activities directed towards the accomplishment of a set of common identifiable objectives or purposes.	11000 = General Academic Instruction; 21000= Departmental Research; 72000 = Utilities; 1100x = Gen Acad Instr-ICRX
CLASS_DESCR	Class Name	Character	30	M_GLDW1	CLASS_CF_TBL CURR_CLASS_CF_VW	R	A textual description of the code used to group related activities directed towards the accomplishment of a set of common identifiable objectives or purposes.	General Academic Instruction; Departmental Research; Utilities; Gen Acad Instr-ICRX
CLASS_EFF_STATUS	Class Effective Status Code	Character	1	M_GLDW1	CLASS_CF_TBL CURR_CLASS_CF_VW	R	A code specifying the current status of a class.	A = Active; I = Inactive
CLASS_EFFDT	Class Effective Date	Date		M_GLDW1	CLASS_CF_TBL CURR_CLASS_CF_VW	R	The date on which the class status becomes effective.	01/01/1998

Physical Element Name	Logical Element Name	Format Type	Format Length	Data Set	Table Locations	Security Code	Element Definition	Examples of Valid Values
CLASS_GRP	Class Group Code	Character	20	M_GLDW1	CLASS_CF_TBL CURR_CLASS_CF_VW	R	A code used to group classes that serve a similar purpose.	INSTRUCTION; ADMINISTRATION; SCHOLARSHIPS
CLASS_GRP_DESCR	Class Group Description	Character	30	M_GLDW1	CLASS_CF_TBL CURR_CLASS_CF_VW	R	A textual description of the code used to group classes that serve a similar purpose.	Instruction Functions; Administration Functions; Scholarship Functions
CLASS2	Class2 Code	Character	5	M_GLDW1	CNVCHARTFD	R	A code used to group related activities directed towards the accomplishment of a set of common identifiable objectives or purposes. This 'second' class field is used to map legacy function codes to their Indirect Cost Recovery (ICR) excluded classes.	1100X = Gen Acad Instr-ICRX
CORPORATE_CUST_ID	Corporate Customer Identification Code	Character	15	M_GLDW1	CUSTOMER	R	A code used to categorize customers under a single customer. For sponsored customers, this code is the billing sponsor code assigned on a project/grant. For general customers, this code is the same as the customer it is assigned to.	000125 = 21 st Century Technologies Inc; 003170 = VISION Detroit; 889000 = Department of Energy
CORPORATE_CUST_NAME1	Corporate Customer Name One	Character	40	M_GLDW1	CUSTOMER	R	The primary name of a corporate customer.	21 st Century Technologies Inc; VISION Detroit; Department of Energy
CORPORATE_CUST_SETID	Corporate Customer Set Identification Code	Character	5	M_GLDW1	CUSTOMER	R	A code representing the organizational unit to which a corporate customer is assigned.	SPALL; GNALL;
CUST_ADDRESS1	Customer Address 1	Character	55	M_GLDW1	CUSTOMER	R	The first of four address lines which contain various address information for the customer.	Accounts Payable; Dept of Ophthalmology; Disbursements Division 0995

Physical Element Name	Logical Element Name	Format Type	Format Length	Data Set	Table Locations	Security Code	Element Definition	Examples of Valid Values
CUST_ADDRESS2	Customer Address 2	Character	55	M_GLDW1	CUSTOMER	R	The second of four address lines which contain various address information for the customer.	Center for Biotechnology; Attn: Joe Smith PhD; PO 10229635
CUST_ADDRESS3	Customer Address 3	Character	55	M_GLDW1	CUSTOMER	R	The third of four address lines which contain various address information for the customer.	Department of Biosciences at NOVUM; ONO-EM H-LAB 13; 9500 Gilman Drive
CUST_ADDRESS4	Customer Address 4	Character	55	M_GLDW1	CUSTOMER	R	The fourth of four address lines which contain various address information for the customer.	S-141 57 Huddinge; Sternwartstrasse 14;
CUST_CITY	Customer City	Character	30	M_GLDW1	CUSTOMER	R	The name of the village, town or city associated with the address of a customer.	BRIGHTON; ANN ARBOR
CUST_COUNTRY	Customer Country Code	Character	3	M_GLDW1	CUSTOMER	R	A code representing the country associated with a customer.	USA = United States
CUST_COUNTRY_DESCR	Customer Country Description	Character	30	M_GLDW1	CUSTOMER	R	A textual description of the code representing a country associated with the address of a customer.	United States
CUST_ID	Customer Identification Code	Character	15	M_GLDW1	AR_ITEM AR_ITEM_ACTIVITY AR_ITEM_ACTIVITY_OWNER AR_ITEM_DST AR_ITEM_OWNER BILL_HDR CUSTOMER	R	A code uniquely identifying a customer. For sponsored customers, this code is the primary project/grant specified for correspondence with the sponsor.	005140; GN03519; N003744
CUST_POSTAL	Customer Postal Code	Character	12	M_GLDW1	CUSTOMER	R	The U.S. ZIP code of the delivery address in the U.S., or the equivalent postal delivery code used in other countries.	48104-2316; 481042316
CUST_STATE	Customer State Code	Character	6	M_GLDW1	CUSTOMER	R	A code representing the state, territory, or district associated with the customer address. International addresses will have codes beyond the traditional 50 states in this field.	CA = California; IL = Illinois; MI = Michigan

Physical Element Name	Logical Element Name	Format Type	Format Length	Data Set	Table Locations	Security Code	Element Definition	Examples of Valid Values
CUST_STATE_DESCR	Customer State Description	Character	30	M_GLDW1	CUSTOMER	R	A textual description of the code representing the state, territory, or district associated with the customer address. International addresses will have descriptions beyond the traditional 50 states in this field.	California; Illinois; Michigan
CUST_STATUS	Customer Status Code	Character	1	M_GLDW1	CUSTOMER	R	A code specifying the current status of a customer.	A = Active; I = Inactive
CUST_VCHR_NBR	Customer Voucher Number	Character	10	M_GLDW1	AR_ITEM BILL_HDR	R	A system assigned sequential number used to uniquely identify a sponsored customer's invoice sequence. Accounts receivable items not created in Billing will not have this field populated.	1; 23;
CUSTOMER_NAME1	Customer Name One	Character	40	M_GLDW1	CUSTOMER	R	The primary name of a customer.	Department of Energy; State of Texas; General Motors
CUSTOMER_NAMESHORT	Customer Short Name	Character	10	M_GLDW1	CUSTOMER	R	An abbreviated name by which a customer is known.	DOE = Department of Energy; St of TX = State of Texas; GM = General Motors
CUSTOMER_SETID	Customer Set Identification Code	Character	5	M_GLDW1	AR_ITEM AR_ITEM_ACTIVITY AR_ITEM_DST BILL_HDR CUSTOMER	R	A code representing the organizational unit to which a customer is assigned.	GNALL; SPALL
CUSTOMER_TYPE	Customer Type Code	Character	1	M_GLDW1	CUSTOMER	R	A code representing the type of reimbursement from a sponsored customer.	0 = Scheduled; 6 = CR – Other; 8 = One-Time
CUSTOMER_TYPE_DESCRSHORT	Customer Type Short Description	Character	10	M_GLDW1	CUSTOMER	R	A textual description of the code representing the type of reimbursement from a sponsored customer.	Scheduled; CR – Other; One-Time
DEPARTMENT_REF_NUM	Department Reference Number	Character	30	M_GLDW1	AR_ITEM BILL_HDR	R	An alpha numeric code for general receivables used by a department for reference on an invoice and its accounts receivable item. For sponsored receivables, this is the Sponsor Award Number.	873.RFP DEP2; 146420 #113542; 144KF84 H02

Physical Element Name	Logical Element Name	Format Type	Format Length	Data Set	Table Locations	Security Code	Element Definition	Examples of Valid Values
DEPOSIT_BUSINESS_UNIT	Deposit Business Unit Code	Character	5	M_GLDW1	AR_ITEM_ACTIVITY	R	A code representing the highest organizational unit involved with a deposit.	UMICH = University of Michigan
DEPOSIT_ID	Deposit Identification Code	Character	15	M_GLDW1	AR_ITEM_ACTIVITY	R	A system assigned, sequential number used to define a deposit.	13061; 13443; 13803
DEPT_BUD_SEQ	Department Budget Sequence Code	Character	20	M_GLDW1	CURR_FN_DEPT_VW FN_DEPT_TBL	R	A code used to group U of M departments by their reporting relationships for the General Fund Budget.	COLLEGE_OF_LS&A; MEDICAL_SCHOOL
DEPT_BUD_SEQ_DESCR	Department Budget Sequence Description	Character	30	M_GLDW1	CURR_FN_DEPT_VW FN_DEPT_TBL	R	A textual description of the code used to group U of M departments by their reporting relationships for the General Fund Budget.	College of Lit, Science and Arts; Medical School
DEPT_DESCR	Department Name	Character	30	M_GLDW1	CURR_FN_DEPT_VW FN_DEPT_TBL	R	A textual description of the code that identifies each academic or administrative unit that has programmatic, operational and fiscal (including budgetary) responsibility.	Physics Department; College of Lit, Science & Arts; UMH Administration
DEPT_EFF_STATUS	Department Effective Status Code	Character	1	M_GLDW1	CURR_FN_DEPT_VW FN_DEPT_TBL	R	A code specifying the current status of a U of M department.	A = Active; I = Inactive
DEPT_EFFDT	Department Effective Date	Date		M_GLDW1	CURR_FN_DEPT_VW FN_DEPT_TBL	R	The date when the department status becomes effective.	01/01/1998
DEPT_GRP	Department Group Code	Character	20	M_GLDW1	CURR_FN_DEPT_VW FN_DEPT_TBL	R	A code used to group U of M departments for reporting purposes. This code is used to group U of M schools, colleges, administrative areas, and vice presidential areas.	COLLEGE_OF_LS&A; MEDICAL_SCHOOL; UM_HOSPITAL
DEPT_GRP_CAMPUS	Department Group Campus Code	Character	20	M_GLDW1	CURR_FN_DEPT_VW FN_DEPT_TBL	R	A code used to identify department groups by campus.	UM_ANN-ARBOR; UM_DEARBORN; UM_FLINT
DEPT_GRP_CAMPUS_DESCR	Department Group Campus Description	Character	30	M_GLDW1	CURR_FN_DEPT_VW FN_DEPT_TBL	R	A textual description of the code used to identify department groups by campus.	Univ of Mich-Ann-Arbor; Univ of Mich-Dearborn; Univ of Mich-Flint

Physical Element Name	Logical Element Name	Format Type	Format Length	Data Set	Table Locations	Security Code	Element Definition	Examples of Valid Values
DEPT_GRP_DESCR	Department Group Description	Character	30	M_GLDW1	CURR_FN_DEPT_VW FN_DEPT_TBL	R	A textual description of the code used to group U of M departments for reporting purposes. This description is used to group U of M schools, colleges, administrative areas, and vice presidential areas.	College of Lit, Science and Arts; Medical School; U of M Hospital
DEPT_GRP_VP_AREA	Department Group Vice President Area Code	Character	20	M_GLDW1	CURR_FN_DEPT_VW FN_DEPT_TBL	R	A code used to group U of M department groups by President, Vice President, or Chancellor, based on direct reporting lines.	PRVST_EXC_VP_A CA_AFF; VP_STUDENT_AFFA IRS; EXC_VP_MED_AFF
DEPT_GRP_VP_AREA_DESCR	Department Group Vice President Area Description	Character	30	M_GLDW1	CURR_FN_DEPT_VW FN_DEPT_TBL	R	A textual description of the code used to group U of M department groups by President, Vice President, or Chancellor, based on direct reporting lines.	Provost & Exec VP Academic Aff; VP for Student Affairs; EXEC.VP for Medical Affairs
DEPTID	Department Identification Code	Character	10	M_GLDW1	AR_ITEM_DST AR_ITEM_ACTIVITY_OWNER AR_ITEM_OWNER BILL_ACCT_ENTRY CNVCHARTFD CURR_FN_DEPT_VW FN_DEPT_TBL JRNL_LN	R	A code that identifies each academic or administrative unit that has programmatic, operational and fiscal (including budgetary) responsibility. Note: In the PAY_ESTMT_SUMMARY table, the DEPTID indicates the department responsible for providing funding for a specific job.	184500 = Physics Department; 170000 = College of Lit, Science & Arts; 311679 = UMH Administration
DISPUTE_AMOUNT	Dispute Amount	Signed Number	15,2	M_GLDW1	AR_ITEM	R	The disputed dollar amount of the balance of an accounts receivable item.	0.00; 215.78; 98,000.00
DISPUTE_DT	Dispute Date	Date		M_GLDW1	AR_ITEM	R	The date on which a disputed accounts receivable item was flagged with a dispute status.	11/16/2004; 05/16/2005; 06/27/2006
DISPUTE_STATUS	Dispute Status Code	Character	3	M_GLDW1	AR_ITEM	R	A code specifying the current status of a disputed accounts receivable item.	B11 = Bankruptcy Chapter 11; PD = Paid; TOP = Treasury Offset Program

Physical Element Name	Logical Element Name	Format Type	Format Length	Data Set	Table Locations	Security Code	Element Definition	Examples of Valid Values
DISPUTE_STATUS_DESCR	Dispute Status Description	Character	30	M_GLDW1	AR_ITEM	R	A textual description of the code specifying the current status of a disputed accounts receivable item.	Bankruptcy Chapter 11; Paid; Treasury Offset Program
DOLLAR_AMOUNT	Transaction Amount	Signed Number	15,2	M_GLDW1	JRNL_LN	R	The dollar amount associated with a financial transaction or chart of account balance.	-458.00; 763,000.00
DRDA_CNTCT_EMPLID	Division of Research Development and Administration Contact Employee Identification Code	Character	11	M_GLDW1	CURR_PROJECT_GRANT_VW PROJECT_GRANT_TBL	R	A system assigned number to uniquely identify a person at U of M. Commonly referred to as UMID. This identifies the Division of Research Development and Administration (DRDA) representative associated with a project/grant.	25582542
DRDA_CNTCT_NAME	Division of Research Development and Administration Contact Name	Character	50	M_GLDW1	CURR_PROJECT_GRANT_VW PROJECT_GRANT_TBL	R	The name of the Division of Research Development and Administration (DRDA) representative associated with a project/grant. Person name format is Last,First M.	Adamson, Sonya T; Holden, Peter
DRDA_NBR	Division of Research Development and Administration Number	Character	16	M_GLDW1	CURR_PROJECT_GRANT_VW PROJECT_GRANT_TBL	R	A code that uniquely identifies a record in the Electronic Research Proposal Management (eRPM) system. The first two digits of the code identify the fiscal year in which the record was created. The digits are system generated and sequential representing the number of submissions in the fiscal year. This code is commonly referred to as the Division Of Research Development Administration (DRDA) number, the proposal number or the Proposal Approval Form (PAF) ID. Note:If the DRDA has an "-OR" at the end, the record is a snapshot of the PAF that was originally submitted to the sponsor The OR stands for "Original" and these records should not be included when doing summary reports.	99-4563 03-00489; 08-PAF00555; 09-PAF00679-PRE; 08-PAF00555-OR

Physical Element Name	Logical Element Name	Format Type	Format Length	Data Set	Table Locations	Security Code	Element Definition	Examples of Valid Values
DW_DATA	Data Warehouse Data	Character	50	M_GLDW1	GLSTATUS	R	The names of the data warehouse objects that were loaded. These objects could be a data set, a group of tables or an individual table.	Accounts Receivable Tables; General Ledger Tables; Historical Chartfield Tables;
DW_OWNER	Data Warehouse Owner	Character	8	M_GLDW1	GLSTATUS	R	The owner (oracle schema) of the data warehouse objects that were loaded.	M_gldw1
EMPLID	Employee Identification Code	Character	11	M_GLDW1	CURR_FN_DEPT_TBL FN_DEPT_TBL PERSONAL_DATA	R	A system assigned number to uniquely identify a person at U of M. Commonly referred to as UMID.	25582542
EXTRACT_DT	Extract Date	Date/Time		M_GLDW1	GLSTATUS	R	The date and time at which the data was extracted from the source system.	07/22/2000 7:06:17 PM
FIN_OPS_CNTCT_CD	Financial Operations Contact Code	Character	4	M_GLDW1	CURR_PROJECT_GRANT_VW PROJECT_GRANT_TBL	R	A code that identifies the FinOps coordinator.	00; 37; 64
FIN_OPS_CNTCT_EMPLID	Financial Operations Contact Employee Identification Code	Character	11	M_GLDW1	CURR_PROJECT_GRANT_VW PROJECT_GRANT_TBL	R	A system assigned number to uniquely identify a person at U of M. Commonly referred to as UMID. This identifies the FinOps Coordinator associated with a project/grant.	25582542
FIN_OPS_CNTCT_NAME	Financial Operations Contact Name	Character	50	M_GLDW1	CURR_PROJECT_GRANT_VW PROJECT_GRANT_TBL	R	The name of the FinOps Coordinator associated with a project/grant. Person name format is Last,First M.	Adamson, Sonya T; Holden, Peter
FISCAL_YEAR	Fiscal Year	Number	4	M_GLDW1	AR_ITEM_DST BILL_ACCT_ENTRY CAL_DETP_TBL JRNL_HEADER	R	The U of M fiscal year in the format CCYY. The U of M fiscal year runs from July through June. For example, July 1, 2000–June 30, 2001 is Fiscal Year 2001.	2000; 2001
FN_CONTRACT_NUM	Financial Contract Number	Character	25	M_GLDW1	AR_ITEM BILL_HDR	R	An alpha numeric value uniquely identifying a financial contract if it is referenced on a sponsored invoice or accounts receivable item.	DTNH22-99-H-07019;
FUND_CODE	Fund Code	Character	5	M_GLDW1	AR_ITEM_DST AR_ITEM_ACTIVITY_OWNER AR_ITEM_OWNER BILL_ACCT_ENTRY CNVCHARTFD CURR_FUND_VW FUND_TBL JRNL_LN	R	A code used to identify the source of funds and intended use of the funds.	10000 = General; 52000 = Auxiliary-Internal Services

Physical Element Name	Logical Element Name	Format Type	Format Length	Data Set	Table Locations	Security Code	Element Definition	Examples of Valid Values
FUND_DESCR	Fund Name	Character	30	M_GLDW1	CURR_FUND_VW FUND_TBL	R	A textual description of the code that identifies the source of funds and intended use of the funds.	General; Auxiliary-Internal Services
FUND_EFF_STATUS	Fund Effective Status Code	Character	1	M_GLDW1	CURR_FUND_VW FUND_TBL	R	A code specifying the current status of a fund.	A = Active; I = Inactive
FUND_EFFDT	Fund Effective Date	Date		M_GLDW1	CURR_FUND_VW FUND_TBL	R	The date on which the fund status becomes effective.	07/01/1998
FUND_GRP	Fund Group Code	Character	20	M_GLDW1	CURR_FUND_VW FUND_TBL	R	A code used to group funds for reporting purposes. Note: sourced from the UM_FUND_GROUP tree.	AUXILIARY = Auxiliary; PLANT = Plant
FUND_GRP_DESCR	Fund Group Description	Character	30	M_GLDW1	CURR_FUND_VW FUND_TBL	R	A textual description of the code used to group funds for reporting purposes.	Auxiliary; Plant
GROSS_EXTENDED_AMT	Gross Extended Amount	Signed Number	15,2	M_GLDW1	BILL_LINE	R	The dollar amount representing the product of the Unit Quantity and Unit Amount of an invoice line.	-49,231.85; 713.87; 2,440,000.00
IC_BASIS	Indirect Cost Basis Code	Character	4	M_GLDW1	CURR_PROJECT_GRANT_VW PROJECT_GRANT_TBL	R	A code that identifies groups of accounts eligible for indirect cost recovery.	0; 25; 50
IC_RATE_PCT	Indirect Cost Rate Percent	Number	4,2	M_GLDW1	CURR_PROJECT_GRANT_VW PROJECT_GRANT_TBL	R	The rate at which indirect cost is charged.	0.00; 30.00; 52.50
INITIAL_DEPTID	Initial Department Code	Character	10	M_GLDW1	CURR_PROJECT_GRANT_VW PROJECT_GRANT_TBL	R	A code that identifies each initial academic or administrative unit that has programmatic, operational and fiscal (including budgetary) responsibility for the project/grant.	184500 = Physics Department; 170000 = College of Lit, Science & Arts
INITIAL_FUND_CODE	Initial Fund Code	Character	5	M_GLDW1	CURR_PROJECT_GRANT_VW PROJECT_GRANT_TBL	R	A code used to identify the initial source of funds and intended use of the funds for the project/grant.	10000 = General; 52000 = Auxiliary-Internal Services
INVOICE	Invoice Number	Character	22	M_GLDW1	BILL_ACCT_ENTRY BILL_HDR BILL_LINE	R	A system assigned number used to uniquely identify an invoice.	1000000; 1008216; 577571
INVOICE_AMOUNT	Invoice Amount	Signed Number	15,2	M_GLDW1	BILL_HDR	R	The total dollar amount of an invoice.	-17,457.49; 1,522.08; 21,765.00

Physical Element Name	Logical Element Name	Format Type	Format Length	Data Set	Table Locations	Security Code	Element Definition	Examples of Valid Values
INVOICE_FORM_DESCR	Invoice Form Description	Character	30	M_GLDW1	BILL_HDR	R	A textual description of the code that identifies the type of form used for an invoice.	No Invoice Will Be Printed; Standard Form 1034; Sponsored Program Standard Inv
INVOICE_FORM_ID	Invoice Form Identification Code	Character	10	M_GLDW1	BILL_HDR	R	A code that identifies the type of form used for an invoice.	GNNOPRINT = No Invoice Will Be Printed; SF1034 = Standard Form 1034; SPSTANDARD = Sponsored Program Standard Inv
INVOICE_LINE	Invoice Line	Number	5	M_GLDW1	BILL_LINE	R	A sequential number used to uniquely identify the sort order of each line of an invoice.	1; 5; 10
INVOICE_TYPE	Invoice Type Code	Character	3	M_GLDW1	BILL_HDR	R	A code representing the type of an invoice.	REG = Regular
INVOICE_TYPE_DESCRSHORT	Invoice Type Short Description	Character	10	M_GLDW1	BILL_HDR	R	An abbreviated textual description of the code representing the type of an invoice.	Regular
ISR_REPORT_GRP	Institute of Social Research Report Group Code	Character	20	M_GLDW1	CURR_PROJECT_GRANT_VW PROJECT_GRANT_TBL	R	A code used to group Institute of Social Research project grants for reporting purposes.	1000 = Direct Cost of Research; 3100 = Center Administration; 5200 = Central Service
ISR_REPORT_GRP_DESCR	Institute of Social Research Report Group Description	Character	30	M_GLDW1	CURR_PROJECT_GRANT_VW PROJECT_GRANT_TBL	R	A textual description of the code used to group Institute of Social Research project grants for reporting purposes.	Direct Cost of Research; Center Administration; Central Service

Physical Element Name	Logical Element Name	Format Type	Format Length	Data Set	Table Locations	Security Code	Element Definition	Examples of Valid Values
ISR_REPORT_SUBGRP	Institute of Social Research Report Sub Group Code	Character	20	M_GLDW1	CURR_PROJECT_GRANT_VW PROJECT_GRANT_TBL	R	A code used to further group Institute of Social Research project grants within a report group.	1020 = Center Sundries; 3120 = Leadership Funds; 5230 = Human Resources
ISR_REPORT_SUBGRP_DESCR	Institute of Social Research Report Sub Group Description	Character	30	M_GLDW1	CURR_PROJECT_GRANT_VW PROJECT_GRANT_TBL	R	A textual description of the code used further group Institute of Social Research project grants within a report group.	Center Sundries; Leadership Funds; Human Resources
ITEM_CLOSED_DT	Item Closed Date	Date		M_GLDW1	AR_ITEM	R	The date on which an accounts receivable item was closed.	10/31/2004; 11/07/2005; null
JOURNAL_AUTH_EMPLID	Journal Authorizer Employee Identification Code	Character	11	M_GLDW1	JRNL_HEADER	R	A system assigned number used to uniquely identify a person at U of M. Commonly referred to as UMID. This identifies the person responsible for journal entry authorization.	25582542
JOURNAL_AUTH_NAME	Journal Authorizer Name	Character	50	M_GLDW1	JRNL_HEADER	R	The name of the person responsible for journal entry authorization. Person name format is LAST, FIRST M.	ADAMSON, SONYA T; HOLDEN, PETER
JOURNAL_AUTH_PHONE	Journal Authorizer Phone	Character	24	M_GLDW1	JRNL_HEADER	R	The telephone number of the person responsible for journal entry authorization.	718/654-3312; 418/123-4567
JOURNAL_DATE	Journal Date	Date		M_GLDW1	AR_ITEM_DST BILL_ACCT_ENTRY JRNL_HEADER JRNL_LN	R	The date of the journal transaction.	07/12/2000
JOURNAL_DESCR254	Journal Description	Character	254	M_GLDW1	JRNL_HEADER	R	A description of the journal transaction.	AP Accruals; Transfer funds to support program
JOURNAL_ENTERED_OPRID	Journal Entered Operator Identification	Character	30	M_GLDW1	JRNL_HEADER	R	A code representing the operator identification of the person who entered the journal transaction into the system.	DSELL; MPCONAB

Physical Element Name	Logical Element Name	Format Type	Format Length	Data Set	Table Locations	Security Code	Element Definition	Examples of Valid Values
JOURNAL_ID	Journal Identification	Character	10	M_GLDW1	AR_ITEM_DST BILL_ACCT_ENTRY JRNL_HEADER JRNL_LN	R	An alpha numeric number identifying a journal transaction.	AP00108100 = AP Accruals; 0000104838 = Transfer funds to support program
JOURNAL_LINE	Journal Line	Number	9	M_GLDW1	AR_ITEM_DST BILL_ACCT_ENTRY JRNL_LN	R	The line number of the detail journal line.	3; 11; 20; 1010
JOURNAL_LINE_DESCR	Journal Line Transaction Description	Character	30	M_GLDW1	JRNL_LN	R	A textual description of the journal line.	AP Accrual; Balancing Cash; Miscellaneous Supplies
JOURNAL_SOURCE	Journal Source Code	Character	3	M_GLDW1	JRNL_HEADER	R	A user or system assigned code used to identify the source for the Journal Entry. This identifies whether the Journal Entry is from a sub system, a specific department, an allocation, etc.	AP = Generated from Accts. Payable; LSA = LSA JE User; IDC = Indirect Cost Allocation
JOURNAL_SOURCE_DESCR	Journal Source Description	Character	30	M_GLDW1	JRNL_HEADER	R	A textual description of the code used to identify the source for the Journal Entry. This identifies whether the Journal Entry is from a sub system, a specific department, an allocation, etc.	Generated from Accts. Payable; LSA JE User; Indirect Cost Allocation
JOURNAL_SYSTEM_SOURCE	Journal System Code Source	Character	3	M_GLDW1	JRNL_HEADER	R	A system assigned code used to identify the system source for the Journal Entry.	GBI = JnlGen – Billing; PNL = PS/GL Journal Entry Page; EXT = PS/GL External Journal
JRNL_LN_REF	Journal Line Reference Number	Character	10	M_GLDW1	JRNL_LN	R	An alpha numeric reference for a journal line assigned by a user.	AP; C471896
JRNL_LN_RECON_FLG	Journal Line Reconciliation Flag	Character	1	M_GLDW1	JRNL_LN	R	A code indicating whether a journal line been reconciled or not.	Y = Yes; N = No

Physical Element Name	Logical Element Name	Format Type	Format Length	Data Set	Table Locations	Security Code	Element Definition	Examples of Valid Values
JRNL_LN_RECON_LAST_UPDATE_BY	Journal Line Reconciliation Last Update By Operator Identification Code	Character	30	M_GLDW1	JRNL_LN	R	The operator identification of the last person to have reconciled or to have added a note to the journal line.	RKLAFFKE; DSELL
JRNL_LN_RECON_LAST_UPDATE_DT	Journal Line Reconciliation Last Update Date	Date		M_GLDW1	JRNL_LN	R	The date on which the journal line reconciliation or not was last update.	01/10/1999
JRNL_LN_RECON_NOTE	Journal Line Reconciliation Note	Character	254	M_GLDW1	JRNL_LN	R	The reconciliation notes related to a journal line.	JE'd to Dept. Divisions for sending a medical student to an intentional conference.
LOAD_DT	Load Date	Date/Time		M_GLDW1	GLSTATUS	R	The date and time at which the data was loaded into the data warehouse. This data may have been loaded into a single table, a group of tables or an entire dataset, as designated by the information provided in the field DW_DATA.	08/04/2000 11:40:13 AM
LOC_FUNDED	Letter Of Credit Funded/Reported Code	Character	1	M_GLDW1	CURR_PROJECT_GRANT_VW PROJECT_GRANT_TBL	R	A code that identifies if project/grants with a Letter of Credit (LOC) payment type are currently being funded by the LOC allocation process.	Y = Yes; N = No
MINORITY_SUB	Minority Subcontract Code	Character	1	M_GLDW1	CURR_PROJECT_GRANT_VW PROJECT_GRANT_TBL	R	A code that identifies whether a sponsored project/grant is a minority sub contract.	Y = Yes; N = No
MONETARY_AMOUNT	Monetary Amount	Signed Number	15,2	M_GLDW1	AR_ITEM_DST BILL_ACCT_ENTRY	R	A number representing the dollar amount associated with a specific set of chartfields for a transaction.	750.00; 995.00; 1,432.57
NET_EXTENDED_AMT	Net Extended Amount	Signed Number	15,2	M_GLDW1	BILL_LINE	R	The dollar amount representing the sum of an invoice line's Gross Extended Amount plus the Total Surcharge Amount less the Total Discount Amount.	-443.38; 771.53; 12,052.73
ORDER_NO	Order Number	Character	10	M_GLDW1	AR_ITEM BILL_HDR	R	An additional reference certain invoices and accounts receivable items may have. For credit memos, this field may contain the number of the invoice it is crediting.	002-07UM; 05/05 AK; 1001234

Physical Element Name	Logical Element Name	Format Type	Format Length	Data Set	Table Locations	Security Code	Element Definition	Examples of Valid Values
OWNER_AR_ITEM_ACT_ENTRY_AMT	Owner Accounts Receivable Item Activity Entry Amount	Signed Number	15,2	M_GLDW1	AR_ITEM_ACTIVITY_OWNER	R	The dollar amount a chartfield is responsible for on an activity of an accounts receivable item.	-2,920,183.00; 392.40; 1,728,473.00
OWNER_AR_ITEM_BAL_AMT	Owner Accounts Receivable Item Balance Amount	Signed Number	15,2	M_GLDW1	AR_ITEM_OWNER	R	The dollar amount a chartfield is responsible for on the balance on an accounts receivable item.	1,269.80; 0.95; 23,681.13
OWNER_DISPUTE_AMT	Owner Dispute Amount	Signed Number	15,2	M_GLDW1	AR_ITEM_OWNER	R	The dollar amount a chartfield is responsible for on the disputed dollar amount of an accounts receivable item.	9,213.24; 155.50; 98,000.00
OWNER_ORIG_AR_ITEM_AMT	Owner Original Accounts Receivable Item Amount	Signed Number	15,2	M_GLDW1	AR_ITEM_OWNER	R	The dollar amount a chartfield is responsible for on the original dollar amount of an accounts receivable item.	60,393.18; 412.64; 25,175.04
PARENT_PROJ_GRANT	Parent Project/Grant	Character	15	M_GLDW1	CURR_PROJECT_GRANT_VW PROJECT_GRANT_TBL	R	The project/grant number of the parent project/grant.	C023493 = Fast neutron cross section; C029988 = Neurotransmitters and calmodul
PAYMENT_ID	Payment Identification Code	Character	15	M_GLDW1	AR_ITEM_ACTIVITY	R	A value used to uniquely identify a payment. This may be a check number or information about a wire payment.	38390; CRA0105081; WT10_012604_03
PAYMENT_SEQ_NUM	Payment Sequence Number	Number	6	M_GLDW1	AR_ITEM_ACTIVITY	R	A system assigned sequential number to uniquely identify the sequence of a payment within a deposit.	1; 10; 14
PAYMENT_TYPE	Payment Type Code	Character	2	M_GLDW1	CURR_PROJECT_GRANT_VW PROJECT_GRANT_TBL	R	A code used to indicate the funding arrangement with the sponsor.	AD = Advnce Pay; CR = Cost Reimb; FP = Fix Price; LC = LOC; PS = Pay Sched
PERSON_ADDRESS1	Person Address 1	Character	55	M_GLDW1	PERSONAL_DATA	R	The first of four address lines which contain various address information.	Accts Pay/Travel Audit
PERSON_ADDRESS2	Person Address 2	Character	55	M_GLDW1	PERSONAL_DATA	R	The second of four address lines which contain various address information.	3048 Admin Svcs 1432
PERSON_ADDRESS3	Person Address 3	Character	55	M_GLDW1	PERSONAL_DATA	R	The third of four address lines which contain various address information.	1009 Greene St.

Physical Element Name	Logical Element Name	Format Type	Format Length	Data Set	Table Locations	Security Code	Element Definition	Examples of Valid Values
PERSON_ADDRESS4	Person Address 4	Character	55	M_GLDW1	PERSONAL_DATA	R	The fourth of four address lines which contain various address information.	Ann Arbor, MI 48103
PERSON_COUNTRY	Person Country Code	Character	3	M_GLDW1	PERSONAL_DATA	R	A code representing the country associated with a person's address.	USA = United States
PERSON_NAME	Person Name	Character	50	M_GLDW1	PERSONAL_DATA	R	The name by which a person is known. Person name format is Last,First M.	Adamson, Sonya T; Holden, Peter
PERSON_PHONE	Person Phone	Character	24	M_GLDW1	PERSONAL_DATA	R	The telephone number of a person.	7186543312; 4181234567
PERSON_UNIQNAME	Person Uniqname	Character	8	M_GLDW1	PERSONAL_DATA	R	A name which is the computing identity of an entity at the University.	Jshmo
PERSON_ZIP	Person Postal Code	Character	10	M_GLDW1	PERSONAL_DATA	R	The 10 digit zip code of an address.	49224; 49286; 1492
PO_REF	Purchase Order Reference Code	Character	30	M_GLDW1	AR_ITEM BILL_HDR	R	A code identifying a purchase order.	002-07UM; 049613;
PROGRAM_CODE	Program Code	Character	5	M_GLDW1	AR_ITEM_DST AR_ITEM_ACTIVITY_OWNER AR_ITEM_OWNER BILL_ACCT_ENTRY CNVCHARTFD CURR_PROGRAM_VW CURR_PROJECT_GRANT_VW JRNL_LN PROGRAM_TBL PROJECT_GRANT_TBL	R	A code identifying a group of related activities, cost centers, revenue centers, responsibility centers and academic programs. These activities may occur within a single department or across multiple departments.	ADMIS = Admissions; RERET = Recruitment & Retention
PROGRAM_DESCR	Program Name	Character	30	M_GLDW1	CURR_PROGRAM_VW PROGRAM_TBL	R	The name identifying a group of related activities, cost centers, revenue centers, responsibility centers and academic programs.	Admissions; Recruitment & Retention
PROGRAM_EFF_STATUS	Program Effective Status Code	Character	1	M_GLDW1	CURR_PROGRAM_VW PROGRAM_TBL	R	A code specifying the current status of a program.	A = Active; I = Inactive
PROGRAM_EFFDT	Program Effective Date	Date		M_GLDW1	CURR_PROGRAM_VW PROGRAM_TBL	R	The date on which the program status becomes effective.	01/01/1998
PROJ_GRANT_STATUS	Project/Grant Status Code	Character	1	M_GLDW1	CURR_PROJECT_GRANT_VW PROJECT_GRANT_TBL	R	A code specifying the current status of a project/grant.	A = Approved; H = Hardship; K = Capital

Physical Element Name	Logical Element Name	Format Type	Format Length	Data Set	Table Locations	Security Code	Element Definition	Examples of Valid Values
PROJ_GRT_ACT_ENDDT	Project Grant Activity End Date	Date		M_GLDW1	PRJ_GRT_RPDTL	R	The last date of the period of activity, which the report addresses (e.g., this report is for activity ending June 30, 2002). The ending date is in the format MM/DD/YYYY.	04/30/2002
PROJ_GRT_APPR_SUPR_DT	Project Grant Approved by Supervisor Date	Date		M_GLDW1	PRJ_GRT_RPDTL	R	The date on which project/grant report was approved by a supervisor. The approval date is in the format MM/DD/YYYY. A value of 12/31/2050 represents an instance of the date not applying to the particular report.	04/30/2002
PROJ_GRT_BILLD_AMT	Project Grant Amount Billed	Signed Number	15,2	M_GLDW1	PRJ_GRT_RPDTL	R	The dollar amount requested from the sponsor for the project/grant.	250,004.00
PROJ_GRT_BILLED_BY	Project/Grant Billed By Code	Character	1	M_GLDW1	CURR_PROJECT_GRANT_VW PROJECT_GRANT_TBL	R	A code representing the billing method if the project/grant is designated as the primary project/grant used in correspondence with the sponsor.	B = AR Interface; E = AR Manual Billing; D = PI Department
PROJ_GRT_BUD_PERIOD_END_DT	Project/Grant Budget Period End Date	Date		M_GLDW1	CURR_PROJECT_GRANT_VW PROJECT_GRANT_TBL	R	The date on which the project/grant budgeting period ends. The end date is in the format MM/DD/YYYY.	04/30/2002
PROJ_GRT_BUD_PERIOD_START_DT	Project/Grant Budget Period Start Date	Date		M_GLDW1	CURR_PROJECT_GRANT_VW PROJECT_GRANT_TBL	R	The date on which the project/grant budgeting period begins. The start date is in the format MM/DD/YYYY.	04/30/2002
PROJ_GRT_COMPLT_DT	Project Grant Completed Date	Date		M_GLDW1	PRJ_GRT_RPDTL	R	The date on which project/grant report was finished. The finish date is in the format MM/DD/YYYY.	04/30/2002
PROJ_GRT_DIR_CNTCT_EMPLID	Project/Grant Director Contact Employee Identification Code	Character	11	M_GLDW1	CURR_PROJECT_GRANT_VW PROJECT_GRANT_TBL	R	A system assigned number used to uniquely identify a person at U of M. Commonly referred to as UMID. This identifies the project director associated with a project/grant.	25582542
PROJ_GRT_DIR_CNTCT_NAME	Project/Grant Director Contact Name	Character	50	M_GLDW1	CURR_PROJECT_GRANT_VW PROJECT_GRANT_TBL	R	The name of the project director associated with a project/grant. Person name format is Last,First M.	Adamson, Sonya T; Holden, Peter
PROJ_GRT_EXT_REQST	Project Grant Externally Requested Code	Character	2	M_GLDW1	PRJ_GRT_RPDTL	R	A code identifying the external requestor of a project/grant report.	11 = Sponsor; 12 = NIH; 13 = ONR
PROJ_GRT_EXT_REQST_DESCR	Project Grant Externally Requested Description	Character	30	M_GLDW1	PRJ_GRT_RPDTL	R	A textual description of the code identifying the external requestor of a project/grant report.	Sponsor; NIH; ONR

Physical Element Name	Logical Element Name	Format Type	Format Length	Data Set	Table Locations	Security Code	Element Definition	Examples of Valid Values
PROJ_GRT_EXT_REQST_DESCRSH	Project Grant Externally Requested Short Description	Character	10	M_GLDW1	PRJ_GRT_RPDTL	R	An abbreviated textual description of the code identifying the external requestor of a project/grant report.	Sponsor; NIH; ONR
PROJ_GRT_GVN_SUPR_DT	Project Grant Given to Supervisor Date	Date		M_GLDW1	PRJ_GRT_RPDTL	R	The date on which the project/grant report was delivered to a supervisor. The delivery date is in the format MM/DD/YYYY. A value of 12/31/2050 represents an instance of the date not applying to the particular report.	04/30/2002
PROJ_GRT_RET_DEPT_DT	Project Grant Returned by Department Date	Date		M_GLDW1	PRJ_GRT_RPDTL	R	The date on which project/grant report approval was returned by the department. The return date is in the format MM/DD/YYYY. A value of 12/31/2050 represents an instance of the date not applying to the particular report.	04/30/2002
PROJ_GRT_RPT_CNTCT_EMPLID	Project Grant Report Contact Employee Identification Code	Character	11	M_GLDW1	PRJ_GRT_RPDTL	R	A system assigned number to uniquely identify a person at U of M. Commonly referred to as UMID. This identifies the Financial Operations coordinator associated with a project/grant report.	55656856
PROJ_GRT_RPT_CNTCT_NAME	Project Grant Report Contact Name	Character	50	M_GLDW1	PRJ_GRT_RPDTL	R	The name of the Financial Operations coordinator associated with a project/grant report. Person name format is Last,First M.	VANSICKLE,BRYAN S
PROJ_GRT_RPT_COMMENT	Project Grant Report Comment	Long	2000	M_GLDW1	PRJ_GRT_RPDTL	R	Comment text associated with a specific project/grant report.	Need to follow-up on this one with Biology; We're late on this one
PROJ_GRT_RPT_CONTACT_CD	Project Grant Report Contact Code	Character	4	M_GLDW1	PRJ_GRT_RPDTL	R	A code used to identify the Financial Operations coordinator associated with a project/grant report.	S05 = 55656856
PROJ_GRT_RPT_DUE_DT	Project Grant Report Due Date	Date		M_GLDW1	PRJ_GRT_RPDTL	R	The date on which a project/grant report is due.	04/30/2002
PROJ_GRT_RPT_STAT	Project Grant Report Status Code	Character	2	M_GLDW1	PRJ_GRT_RPDTL	R	A code specifying the exception status of a project/grant report.	03 = Reported to Authorization; 02 = Positive Balance; 06 = Intern to complete
PROJ_GRT_RPT_STAT_DESCR	PROJ_GRT_RPT_STAT_DESCR	Character	30	M_GLDW1	PRJ_GRT_RPDTL	R	A textual description of the code specifying the exception status of a project/grant report.	Reported to Authorization; Positive Balance; Intern to complete

Physical Element Name	Logical Element Name	Format Type	Format Length	Data Set	Table Locations	Security Code	Element Definition	Examples of Valid Values
PROJ_GRT_RPT_STAT_DESCRSH	Project Grant Report Status Short Description	Character	10	M_GLDW1	PRJ_GRT_RPDTL	R	An abbreviated textual description of the code specifying the exception status of a project/grant report.	Rptd Auth; Pos Balnce; Intern Cmp
PROJ_GRT_RPT_STRT_DT	Project Grant Report Start Date	Date		M_GLDW1	PRJ_GRT_RPDTL	R	The date on which Financial Operations staff began work in the report. The beginning date is in the format MM/DD/YYYY.	04/30/2002
PROJ_GRT_RPT_TYPE	Project/Grant Report Type Code	Character	3	M_GLDW1	PRJ_GRT_RPDTL PRJ_GRT_RPTS	R	A code that identifies the type of report needed for a specific project/grant.	A21 = A-21; BR = Bdgt-Rev; CCR = CumCostRpt
PROJ_GRT_RPT_TYPE_DESCR	Project Grant Report Type Description	Character	30	M_GLDW1	PRJ_GRT_RPDTL PRJ_GRT_RPTS	R	A textual description of the code that identifies the type of report needed for a specific project/grant.	Report A-21; Budget = Revenue; Cumulative Cost Report
PROJ_GRT_RPT_TYPE_DESCRSH	Project Grant Report Type Short Description	Character	10	M_GLDW1	PRJ_GRT_RPDTL PRJ_GRT_RPTS	R	An abbreviated textual description of the code that identifies the type of report needed for a specific project/grant.	A21; Bdgt=Rev; CumCostRpt
PROJ_GRT_SNT_DEPT_DT	Project Grant Sent to Department Date	Date		M_GLDW1	PRJ_GRT_RPDTL	R	The date on which project/grant report was sent to the department for review and approval. The send date is in the format MM/DD/YYYY. A value of 12/31/2050 represents an instance of the date not applying to the particular report.	04/30/2002
PROJECT_GRANT	Project/Grant Code	Character	15	M_GLDW1	AR_ITEM_ACTIVITY_OWNER AR_ITEM_DST AR_ITEM_OWNER BILL_ACCT_ENTRY CNVCHARTFD CURR_PROJECT_GRANT_VW JRNL_LN PRJ_GRT_RPDTL PRJ_GRT_RPTS PROJECT_GRANT_TBL	R	A code used to accumulate financial information on a set of activities over a limited time span. Used for contracts and grants, construction projects and unit-defined projects.	C026993; F000101
PROJECT_GRANT_EFF_STATUS	Project/Grant Effective Status Code	Character	1	M_GLDW1	CURR_PROJECT_GRANT_VW PROJECT_GRANT_TBL	R	A code identifying the current status of a project/grant.	A = Active; I = Inactive
PROJECT_GRANT_EFFDT	Project/Grant Effective Date	Date		M_GLDW1	CURR_PROJECT_GRANT_VW PRJ_GRT_RPDTL PRJ_GRT_RPTS PROJECT_GRANT	R	The date when the project/grant status becomes effective.	01/01/1998

Physical Element Name	Logical Element Name	Format Type	Format Length	Data Set	Table Locations	Security Code	Element Definition	Examples of Valid Values
PROJECT_GRANT_END_DT	Project/Grant End Date	Date		M_GLDW1	CURR_PROJECT_GRANT_VW PROJECT_GRANT_TBL	R	The date on which the project/grant ends.	01/01/1999
PROJECT_GRANT_START_DT	Project/Grant Start Date	Date		M_GLDW1	CURR_PROJECT_GRANT_VW PROJECT_GRANT_TBL	R	The date on which the project/grant starts.	01/01/1998
PROJECT_GRANT_TITLE	Project/Grant Title	Character	75	M_GLDW1	CURR_PROJECT_GRANT_VW PROJECT_GRANT_TBL	R	The title for a project/grant.	Studies Of Human Mutation Rates; Core B – Clarke
PROJECT_GRANT_TYPE	Project/Grant Type Code	Character	2	M_GLDW1	CURR_PROJECT_GRANT_VW PROJECT_GRANT_TBL	R	A code used to indicate the type of a project/grant.	GR = Grant; CT = Contract
REPORT_FREQ	Report Frequency Code	Character	1	M_GLDW1	PRJ_GRT_RPDTL PRJ_GRT_RPTS	R	A code that identifies the reporting frequency to the granting agency.	A = Annual; F = Final; M = Monthly
REPORT_FREQ_DESCR	Report Frequency Description			M_GLDW1	PRJ_GRT_RPDTL	R	A textual description of the code that identifies the reporting frequency to the granting agency.	Annual; Final; Monthly
REPORT_MONTH	Reporting Month Due Code	Character	2	M_GLDW1	PRJ_GRT_RPTS	R	A code that identifies the month or quarter that the report is due to the granting agency.	01 = January; 02 = February; MQ = Qtr – Mar
REPORTING_BUDGET_AMT	Reporting Budget Amount	Signed Number	15,2	M_GLDW1	CURR_PROJECT_GRANT_VW PROJECT_GRANT_TBL	R	A number representing the dollar amount used for budget reporting. Only used for non-sponsored project grants.	0; 1125.00; 5,000,000.00
REVERSAL_CD	Reversal Code	Character	1	M_GLDW1	JRNL_HEADER	R	A code indicating whether the journal is an automatic reversal or will have an automatic reversing entry created and what the date option is for the reversal.	B = Beginning of Next Period; D = On Date Specified by User; E = End of Next Period; N = Do Not Generate Reversal; R = Created by Reversal Process
REVERSAL_DATE	Reversal Date	Date		M_GLDW1	JRNL_HEADER	R	The date of the reversing entry.	01/01/1998
RPT_DAYS_CMPL	Reporting Days to Complete Code	Character	3	M_GLDW1	PRJ_GRT_RPTS	R	A code representing the number of days in which a report must be completed.	015; 090; 180

Physical Element Name	Logical Element Name	Format Type	Format Length	Data Set	Table Locations	Security Code	Element Definition	Examples of Valid Values
SHORTCODE	ShortCode Number	Character	6	M_GLDW1	CNVCHARTFD	R	A code that represents a unique combination (blank and non-blank) of chartfields; fund, department, class, program, and project/grant.	000094 = USDA-6J89B; 012984 = VA Hospital/Med Admin; 035677 = Research Agreement (SAE)
SHORTCODE_DESCR50	ShortCode Description	Character	50	M_GLDW1	CNVCHARTFD	R	A textual description of the code that represents a unique combination (blank and non-blank) of chartfields; fund, department, class, program, and project/grant.	USDA-6J89B; VA Hospital/Med Admin; Research Agreement (SAE)
SHORTCODE_STATUS	ShortCode Status Code	Character	1	M_GLDW1	CNVCHARTFD	R	A code representing the current disposition of the shortcode.	C = Closed; E = Endowment; O = Open; T = Terminated
SHORTCODE_STATUS_DESCRSHORT	ShortCode Status Short Description	Character	10	M_GLDW1	CNVCHARTFD	R	An abbreviated textual description of the code representing the current disposition of the shortcode.	Closed; Endowment; Open; Terminated
SINGLE_ADMIN_CNTCT_EMPLID	Single Administrative Contact Employee Identification Code	Character	11	M_GLDW1	CURR_PROJECT_GRANT_VW PROJECT_GRANT_TBL	R	A system assigned number used to uniquely identify a person at U of M. Commonly referred to as UMID. This identifies the single administrative point of contact associated with a project/grant.	25582542
SINGLE_ADMIN_CNTCT_NAME	Single Administrative Contact Name	Character	50	M_GLDW1	CURR_PROJECT_GRANT_VW PROJECT_GRANT_TBL	R	The name of the single administrative point of contact associated with the project/grant. Person name format is Last,First M.	Adamson, Sonya T; Holden, Peter
SPONSOR	Sponsor Code	Character	6	M_GLDW1	CURR_PROJECT_GRANT_VW PROJECT_GRANT_TBL	R	A code identifying the sponsor or donor of funds of the project/grant.	907200 = National Aeronautics and Space Admin.; 023000 = Alumni Association
SPONSOR_AWARD	Sponsor Award Number	Character	30	M_GLDW1	CURR_PROJECT_GRANT_VW PROJECT_GRANT_TBL	R	A number from the sponsor that identifies the award.	DMS-9622837
SPONSOR_CLASS	Sponsor Class Code	Character	2	M_GLDW1	CURR_PROJECT_GRANT_VW PROJECT_GRANT_TBL	R	A code that classifies sponsors according to its business.	01 = US Government; 03 = US Foundations; 16 = Endowment

Physical Element Name	Logical Element Name	Format Type	Format Length	Data Set	Table Locations	Security Code	Element Definition	Examples of Valid Values
SPONSOR_CLASS_DESCR	Sponsor Class Description	Character	30	M_GLDW1	CURR_PROJECT_GRANT_VW PROJECT_GRANT_TBL	R	A textual description of the code that classifies sponsors according to its business.	US Government; US Foundations; Endowment
SPONSOR_DESCR100	Sponsor Description	Character	100	M_GLDW1	CURR_PROJECT_GRANT_VW PROJECT_GRANT_TBL	R	A textual description of the code identifying the sponsor, donor or other source of funds of a project/grant.	National Aeronautics and Space Admin.; Alumni Association
SPONSOR_DOC_NBR	Sponsor Document Number	Character	20	M_GLDW1	CURR_PROJECT_GRANT_VW PROJECT_GRANT_TBL	R	Letter of Credit (LOC) document number assigned by the sponsor.	9321959; 9321986; 9322106
SPONSOR_TYPE	Sponsor Type Code	Character	1	M_GLDW1	CURR_PROJECT_GRANT_VW PROJECT_GRANT_TBL	R	A code used to indicate the type of sponsor.	F = Federal; I = Internal; N = Non-Federal
SPONSOR_TYPE_DESCR	Sponsor Type Description	Character	30	M_GLDW1	CURR_PROJECT_GRANT_VW PROJECT_GRANT_TBL	R	A textual description of the code used to indicate the type of sponsor.	Federal; Internal; Non-Federal
STATISTIC_AMOUNT	Statistics Amount	Signed Number	15,2	M_GLDW1	JRNL_LN	R	The field used to capture statistical amounts. This is not a monetary amount and will only be populated when the account on the line is a statistical account (i.e. SHR – Shares)	1,500.00; 10,599.20; 95,373.91
SUB_CONTRACT_AWARDEE	Sub Contract Awardee Code	Character	6	M_GLDW1	CURR_PROJECT_GRANT_VW PROJECT_GRANT_TBL	R	A code used to identify a sub contract awardee related to a sponsor project grant.	420900 = Johns Hopkins University; 573600 = Michigan State University; 584415 = Minority Suburban Migration
SUB_CONTRACT_AWARDEE_DESCR100	Sub Contract Awardee Description	Character	100	M_GLDW1	CURR_PROJECT_GRANT_VW PROJECT_GRANT_TBL	R	A textual description of the code used to identify a sub contract awardee related to a sponsor project grant.	Johns Hopkins University; Michigan State University; Minority Suburban Migration
TOT_DISCOUNT_AMT	Total Discount Amount	Signed Number	15,2	M_GLDW1	BILL_LINE	R	The total dollar amount of the discount applied to an invoice line.	0.00
TOT_SURCHARGE_AMT	Total Surcharge Amount	Signed Number	15,2	M_GLDW1	BILL_LINE	R	The total dollar amount of the surcharge applied to an invoice line.	0.00
TRANS_REF_NUM	Transaction Reference Number	Character	8	M_GLDW1	JRNL_HEADER	R	A number representing a user defined reference to a transaction.	00-653; 3/B1/00; KK000306; RTF-0159