

M-Pathways

Asset Management

Data Dictionary



Copyright © 2009
The Regents of The University of Michigan

All rights reserved. This document may be reproduced or reprinted, in whole or in part, without permission as long as the above copyright statement and source are clearly acknowledged. This publication or any reproductions may not be sold. Copyrights, trademarks, and service marks referred to in this documentation are the property of their respective owners.

Michigan Administrative Information Services
University of Michigan
July 2009

Comments and Suggestions

Your feedback is very important to us. As a U-M Data Warehouse user, we encourage you to tell us what you like or dislike about this Data Dictionary. Your comments and suggestions will help us improve this and other MAIS documentation for you in the future.

Please email your comments and suggestions to maishelpdesk@umich.edu. Thank you.

Contents

Asset Management Tables Diagrams	1
General Ledger Tables Diagrams	4
Asset Management Tables Description	7
Asset Management Data Element Dictionary	9

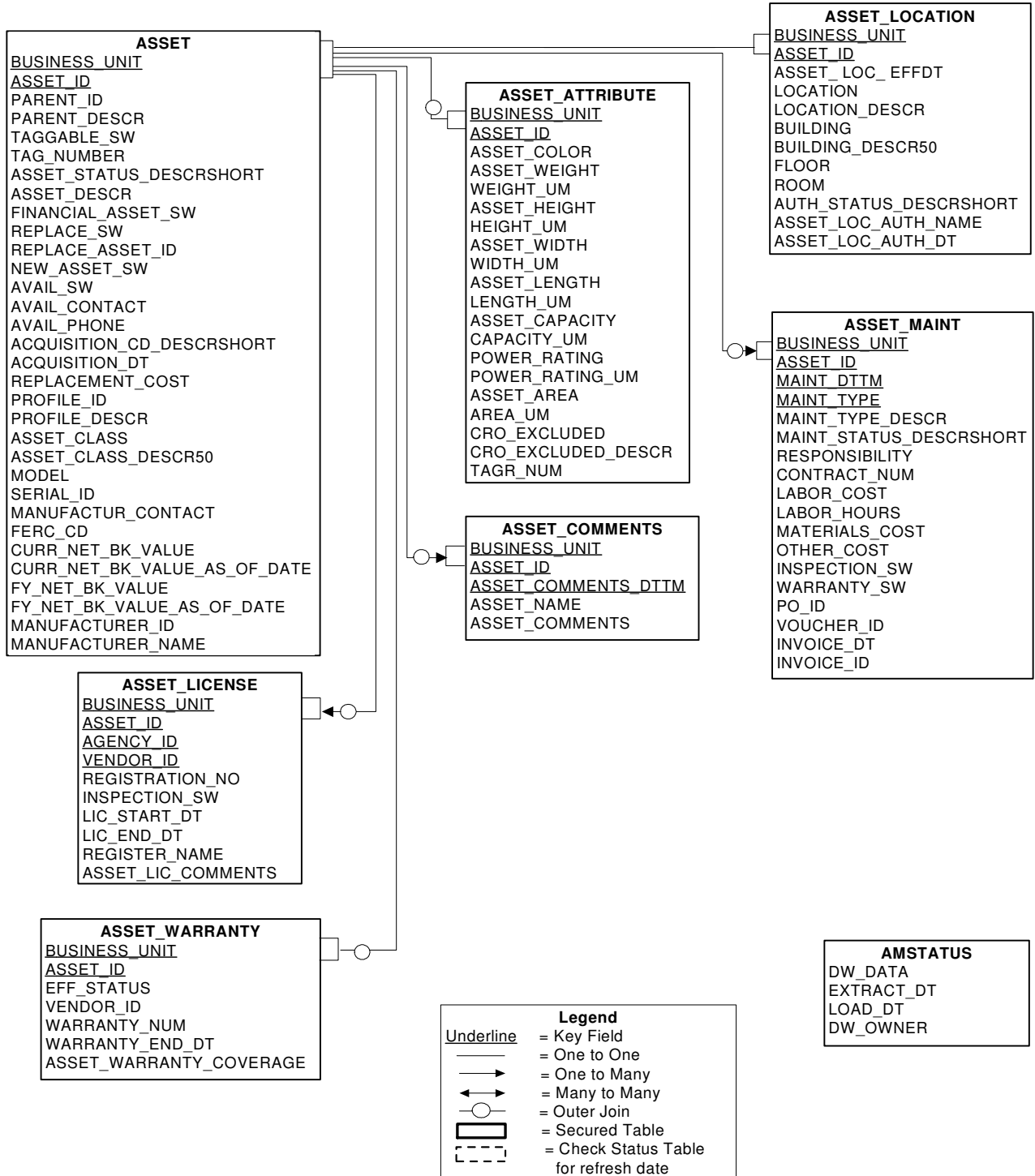
Asset Management Tables Diagrams

The Asset Management Tables Diagrams illustrate the *logical* relationships among the various Asset Management tables. A logical link (connecting line) between two tables indicates that there is a direct data relationship between the two tables. Physically, any tables with a common element can be joined. However, two tables with common elements may not necessarily have logical links to one another. Joining tables without logical links may produce undesired results; a thorough understanding of the data is needed to guarantee accurate results.

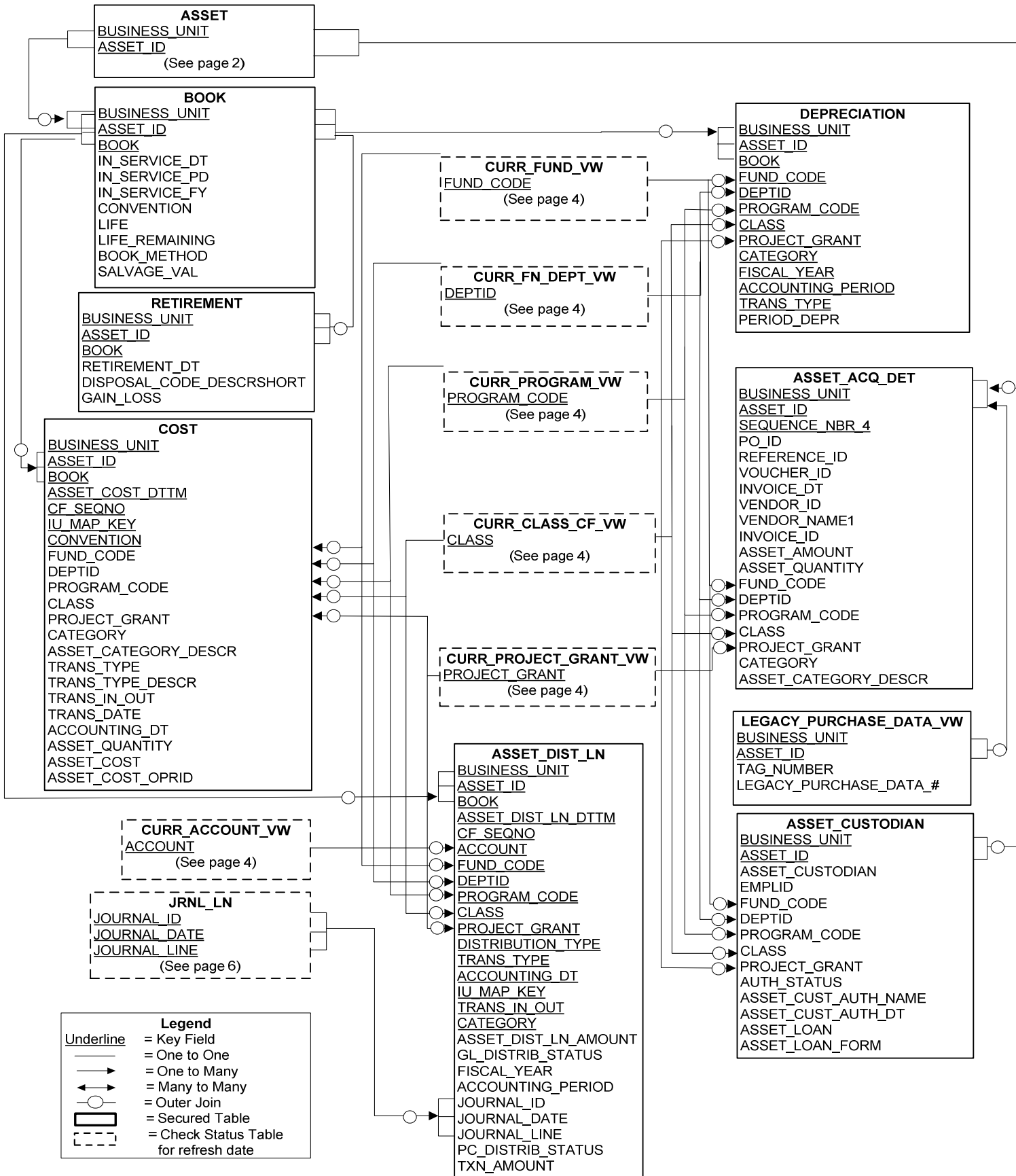
All tables within a data set are not necessarily refreshed on the same schedule. It is *extremely important* to query the status table to determine when the data in each table was last refreshed and to determine the impact this will have on query results.

Note: The Asset Management Tables Diagrams are shown on pages 2 through 6.

General Asset Information and AMStatus



Book Value



General Ledger Chartfield Views

```

CURR_ACCOUNT_VW
ACCOUNT
ACCOUNT_EFFDT
ACCOUNT_EFF_STATUS
ACCOUNT_DESCR
ACCOUNT_TYPE
ACCOUNT_TYPE_DESCR
ACCOUNT_GRP
ACCOUNT_GRP_DESCR
ACCOUNT_GRP_SRC_USE_TYPE
ACCOUNT_GRP_SRC_USE
ACCOUNT_GRP_SRC_USE_DESCR
ACCOUNT_GRP_GASB
ACCOUNT_GRP_GASB_DESCR
ACCOUNT_GRP_SPON_PROJ
ACCOUNT_GRP_SPON_PROJ_DESCR
ACCOUNT_GRP_SP_VOL_RES
ACCOUNT_GRP_SP_VOL_RES_DESCR
ACCOUNT_GRP_ISR_BUDGET
ACCOUNT_GRP_ISR_BUDGET_DESCR
ACCOUNT_GRP_MED_SCH
ACCOUNT_GRP_MED_SCH_DESCR
ACCOUNT_DESCRLONG
  
```

```

CURR_PROJECT_GRANT_VW
PROJECT_GRANT
PROJECT_GRANT_EFFDT
PROJECT_GRANT_EFF_STATUS
PROJECT_GRANT_TITLE
PROJECT_GRANT_TYPE
MINORITY_SUB
PROJ_GRANT_STATUS
PROJECT_GRANT_START_DT
PROJECT_GRANT_END_DT
INITIAL_FUND_CODE
INITIAL_DEPTID
PROJ_GRT_BUD_PERIOD_START_DT
PROJ_GRT_BUD_PERIOD_END_DT
PROJ_GRT_DIR_CNTCT_EMPLID
PROJ_GRT_DIR_CNTCT_NAME
SINGLE_ADMIN_CNTCT_EMPLID
SINGLE_ADMIN_CNTCT_NAME
FIN_OPS_CNTCT_CD
FIN_OPS_CNTCT_EMPLID
FIN_OPS_CNTCT_NAME
DRDA_CNTCT_EMPLID
DRDA_CNTCT_NAME
SPONSOR
SPONSOR_DESCR100
SPONSOR_TYPE
SPONSOR_TYPE_DESCR
SPONSOR_CLASS
SPONSOR_CLASS_DESCR
SPONSOR_AWARD
SPONSOR_DOC_NBR
PAYMENT_TYPE
LOC_FUNDED
ICFDA_NBR
DRDA_NBR
PARENT_PROJ_GRANT
IC_BASIS
IC_RATE_PCT
CLASS
PROGRAM_CODE
PROJ_GRT_BILLED_BY
BILL_SPONSOR
BILL_SPONSOR_DESCR100
SUB_CONTRACT_AWARDEE
SUB_CONTRACT_AWARDEE_DESCR100
BUDG_MUST_EQUAL_REV
REPORTING_BUDGET_AMT
ISR_REPORT_GRP
ISR_REPORT_GRP_DESCR
ISR_REPORT_SUBGRP
ISR_REPORT_SUBGRP_DESCR
  
```

```

CURR_FUND_VW
FUND_CODE
FUND_EFFDT
FUND_EFF_STATUS
FUND_DESCR
FUND_GRP
FUND_GRP_DESCR
  
```

```

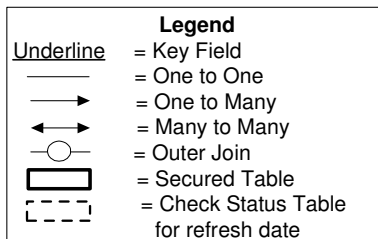
CURR_FN_DEPT_VW
DEPTID
DEPT_EFFDT
DEPT_EFF_STATUS
DEPT_DESCR
EMPLID
DEPT_GRP
DEPT_GRP_DESCR
DEPT_GRP_VP_AREA
DEPT_GRP_VP_AREA_DESCR
DEPT_GRP_CAMPUS
DEPT_GRP_CAMPUS_DESCR
DEPT_BUD_SEQ
DEPT_BUD_SEQ_DESCR
  
```

```

CURR_PROGRAM_VW
PROGRAM_CODE
PROGRAM_EFFDT
PROGRAM_EFF_STATUS
PROGRAM_DESCR
  
```

```

CURR_CLASS_CF_VW
CLASS
CLASS_EFFDT
CLASS_EFF_STATUS
CLASS_DESCR
CLASS_GRP
CLASS_GRP_DESCR
  
```



General Ledger Historical Chartfields

ACCOUNT_TBL
<u>ACCOUNT</u>
<u>ACCOUNT_EFFDT</u>
ACCOUNT_EFF_STATUS
ACCOUNT_DESCR
ACCOUNT_TYPE
ACCOUNT_TYPE_DESCR
ACCOUNT_GRP
ACCOUNT_GRP_DESCR
ACCOUNT_GRP_SRC_USE_TYPE
ACCOUNT_GRP_SRC_USE
ACCOUNT_GRP_SRC_USE_DESCR
ACCOUNT_GRP_GASB
ACCOUNT_GRP_GASB_DESCR
ACCOUNT_GRP_SPON_PROJ
ACCOUNT_GRP_SPON_PROJ_DESCR
ACCOUNT_GRP_SP_VOL_RES
ACCOUNT_GRP_SP_VOL_RES_DESCR
ACCOUNT_GRP_ISR_BUDGET
ACCOUNT_GRP_ISR_BUDGET_DESCR
ACCOUNT_GRP_MED_SCH
ACCOUNT_GRP_MED_SCH_DESCR
ACCOUNT_DESCRLONG

FUND_TBL
<u>FUND_CODE</u>
<u>FUND_EFFDT</u>
FUND_EFF_STATUS
FUND_DESCR
FUND_GRP
FUND_GRP_DESCR

FN_DEPT_TBL
<u>DEPTID</u>
<u>DEPT_EFFDT</u>
DEPT_EFF_STATUS
DEPT_DESCR
EMPLID
DEPT_GRP
DEPT_GRP_DESCR
DEPT_GRP_VP_AREA
DEPT_GRP_VP_AREA_DESCR
DEPT_GRP_CAMPUS
DEPT_GRP_CAMPUS_DESCR
DEPT_BUD_SEQ
DEPT_BUD_SEQ_DESCR

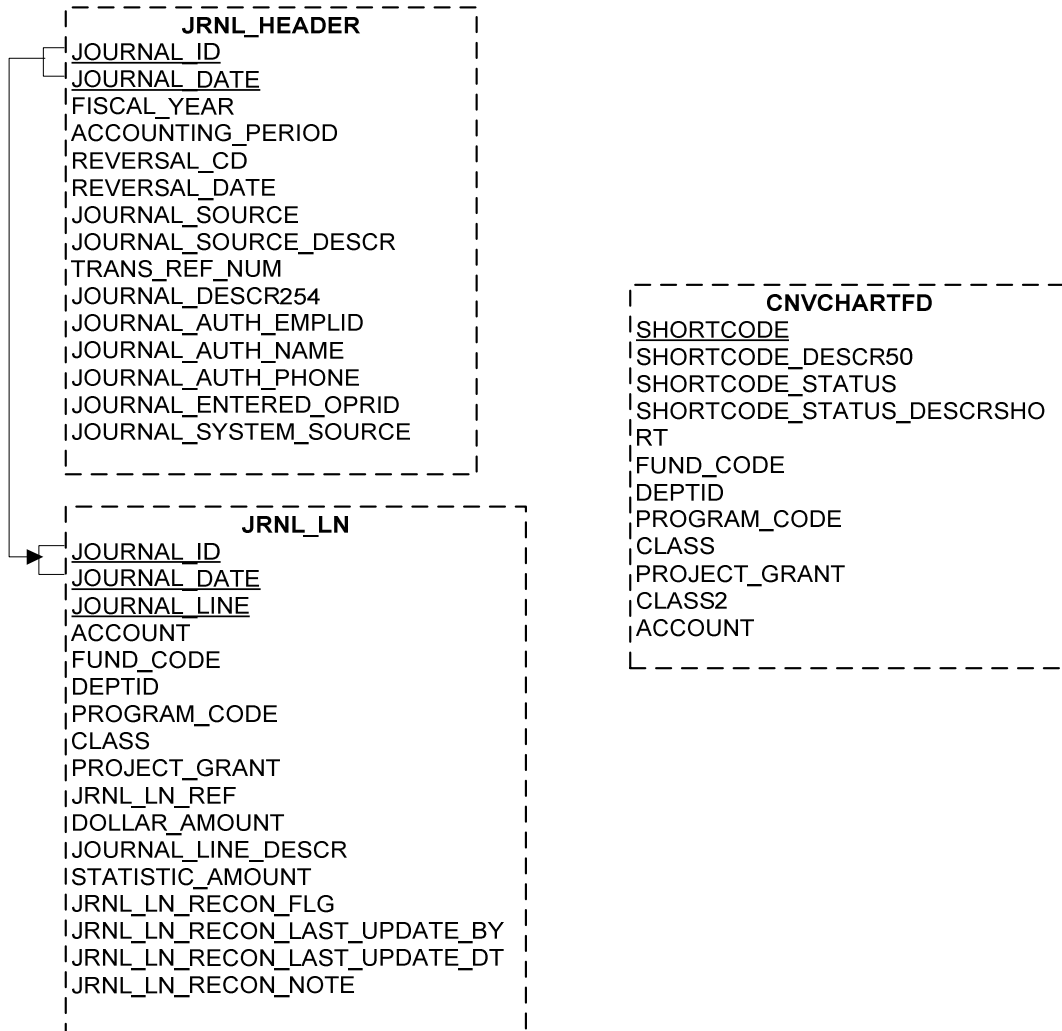
PROGRAM_TBL
<u>PROGRAM_CODE</u>
<u>PROGRAM_EFFDT</u>
PROGRAM_EFF_STATUS
PROGRAM_DESCR

CLASS_CF_TBL
<u>CLASS</u>
<u>CLASS_EFFDT</u>
CLASS_EFF_STATUS
CLASS_DESCR
CLASS_GRP
CLASS_GRP_DESCR

PROJECT_GRANT_TBL
<u>PROJECT_GRANT</u>
<u>PROJECT_GRANT_EFFDT</u>
PROJECT_GRANT_EFF_STATUS
PROJECT_GRANT_TITLE
PROJECT_GRANT_TYPE
MINORITY_SUB
PROJ_GRANT_STATUS
PROJECT_GRANT_START_DT
PROJECT_GRANT_END_DT
INITIAL_FUND_CODE
INITIAL_DEPTID
PROJ_GRT_BUD_PERIOD_START_DT
PROJ_GRT_BUD_PERIOD_END_DT
PROJ_GRT_DIR_CNTCT_EMPLID
PROJ_GRT_DIR_CNTCT_NAME
SINGLE_ADMIN_CNTCT_EMPLID
SINGLE_ADMIN_CNTCT_NAME
FIN_OPS_CNTCT_CD
FIN_OPS_CNTCT_EMPLID
FIN_OPS_CNTCT_NAME
DRDA_CNTCT_EMPLID
DRDA_CNTCT_NAME
SPONSOR
SPONSOR_DESCR100
SPONSOR_TYPE
SPONSOR_TYPE_DESCR
SPONSOR_CLASS
SPONSOR_CLASS_DESCR
SPONSOR_AWARD
SPONSOR_DOC_NBR
PAYMENT_TYPE
LOC_FUNDED
CFDA_NBR
DRDA_NBR
PARENT_PROJ_GRANT
IC_BASIS
IC_RATE_PCT
CLASS
PROGRAM_CODE
PROJ_GRT_BILLED_BY
BILL_SPONSOR
BILL_SPONSOR_DESCR100
SUB_CONTRACT_AWARDEE
SUB_CONTRACT_AWARDEE_DESCR100
BUDG_MUST_EQUAL_REV
REPORTING_BUDGET_AMT
ISR_REPORT_GRP
ISR_REPORT_GRP_DESCR
ISR_REPORT_SUBGRP
ISR_REPORT_SUBGRP_DESCR

Legend	
<u> </u>	= Key Field
—	= One to One
—>	= One to Many
←>	= Many to Many
—○	= Outer Join
▭	= Secured Table
⋯	= Check Status Table for refresh date

Other Asset Related Information



Legend	
<u>Underline</u>	= Key Field
—	= One to One
— >	= One to Many
— <—	= Many to Many
— ○	= Outer Join
▭	= Secured Table
- - - - -	= Check Status Table for refresh date

Asset Management Tables Description

The Asset Management Tables Description provides the following information for each table in the U-M Data Warehouse Asset Management data set:

<i>Physical Table Name</i>	Name for the table you can use in SQL queries.
<i>Logical Table Name</i>	Descriptive name of the table.
<i>Data Set Locations</i>	The names of the data sets in which the table resides.
<i>Table Description</i>	Description of the table.

The tables are ordered alphabetically by table physical name.

Physical Table Name	Logical Table Name	Data Set Locations	Table Description
ACCOUNT_TBL	Account	M_GLDW1	Historical characteristics of accounts, such as account name, type and associated group. Contains all accounts except budget offset accounts.
AMSTATUS	Asset Management Tables Status	M_AMDW1	Status of the update schedule for the Asset Management tables.
ASSET	Asset	M_AMDW1	Historical information about assets.
ASSET_ACQ_DET	Asset Acquisition Detail	M_AMDW1	Historical acquisition details.
ASSET_ATTRIBUTE	Asset Attributes	M_AMDW1	Current characteristics on an asset.
ASSET_COMMENTS	Asset Comments	M_AMDW1	Historical detailed line item descriptive text.
ASSET_CUSTODIAN	Asset Custodian	M_AMDW1	Current information on the custodian of an asset.
ASSET_DIST_LN	Asset Distribution Line	M_AMDW1	Historical Distribution Line information, excluding 'Tax' book information.
ASSET_LICENSE	Asset License	M_AMDW1	Characteristics about an asset's license.
ASSET_LOCATION	Asset Location	M_AMDW1	Current description of the location of an asset.
ASSET_MAINT	Asset Maintenance	M_AMDW1	Historical maintenance record information.
ASSET_WARRANTY	Asset Warranty	M_AMDW1	Current warranty information.
BOOK	Book	M_AMDW1	Information on how the asset was booked, excluding 'Tax' book information.
CLASS_CF_TBL	Class Chartfield	M_GLDW1	Historical characteristics of the chartfield class, such as name and associated groups.
CNVCHARTFD	Convert Account to Chartfields	M_GLDW1	Converts all legacy accounts to chartfields.
COST	Cost	M_AMDW1	Current cost of the asset, excluding 'Tax' book information.
CURR_ACCOUNT_VW	Current Account View	M_GLDW1	Current characteristics of accounts, such as account name, type and associated groups.
CURR_CLASS_CF_VW	Current Class Chartfield View	M_GLDW1	Current characteristics of the chartfield class, such as name and associated group.
CURR_FN_DEPT_VW	Current Financial Department View	M_GLDW1	Current characteristics of departments such as department name and associated groups.
CURR_FUND_VW	Current Fund View	M_GLDW1	Current characteristics of fund codes, such as name and associated groups.
CURR_PROGRAM_VW	Current Program View	M_GLDW1	Current characteristics of program codes, such as description.
CURR_PROJECT_GRANT_VW	Current Project/Grant View	M_GLDW1	Current characteristics of project/grants, such as title, amount and type.
DEPRECIATION	Depreciation	M_AMDW1	Depreciation for the life of the asset by period, excluding 'Tax' book information.
FN_DEPT_TBL	Financial Department	M_GLDW1	Historical characteristics of departments such as department name.
FUND_TBL	Fund	M_GLDW1	Historical characteristics of fund codes, such as name and associated groups.

Physical Table Name	Logical Table Name	Data Set Locations	Table Description
JRNL_HEADER	Journal Header	M_GLDW1	Header data about specific journals.
JRNL_LN	Journal Line	M_GLDW1	Lines or detail lines for journals including chartfields and amounts.
LEGACY_PURCHASE_DATA_VW	Legacy Purchase Data View	M_AMDW1	The legacy account for assets purchased prior to 07/01/98.
PROGRAM_TBL	Program	M_GLDW1	Historical characteristics of program codes, such as description.
PROJECT_GRANT_TBL	Project/Grant	M_GLDW1	Historical characteristics of project/grants, such as title, amount and type.
RETIREMENT	Retirement	M_AMDW1	Current asset retirement information, excluding 'Tax' book information.

Asset Management Data Element Dictionary

The Asset Management Data Element Dictionary contains all the elements found in the U-M Data Warehouse Asset Management Tables, ordered alphabetically by element name. Here is a description of the information that the dictionary provides for each element:

<i>Physical Element Name</i>	Name for the element you can use in SQL queries.	
<i>Logical Element Name</i>	Descriptive name of the element.	
<i>Format Type</i>	Type of value of the element (for example: character, number, or date). <i>Note:</i> If the format type for an element is character or date, you must enclose the variable value in single quotes when entering queries.	
<i>Format Length</i>	Total length of the element. For data elements in the format “number,number”, the first number represents the total length of the element. The second number represents the number of digits to the right of the decimal.	
<i>Data Sets</i>	The names of the data sets that contain the element.	
<i>Table Locations</i>	The names of the tables in which the element is located.	
<i>Security Code</i>	The level of security imposed on the element. Values are:	
	P	Public data Data with no access restriction that may be released to the general public.
	R	Private/ Confidential data Data available to University employees who need to access these data to perform their official University duties. Unless otherwise noted, all institutional data is designated as Private/Confidential.
	S	Sensitive data Data available only to University employees who have specific authorization for access. Never release sensitive data in a manner that enables identifying data element values with a specific person or persons.
<i>Element Definition</i>	Description of the element.	
<i>Examples of Valid Values</i>	Either the specific codes that are valid for the element, or samples of the kind of values for the element. In general, nulls are not valid values. There are two exceptions: 1) dates which have not been supplied in the online system; and 2) data warehouse derived fields for which at least one piece of the data required for the "calculation" is not available from the online system. Dates will not be specifically identified as a field which can be null. Other exception fields are identified with a specification of "null" in the Valid Value column.	

Physical Element Name	Logical Element Name	Format Type	Format Length	Data Set	Table Locations	Security Code	Element Definition	Examples of Valid Values
ACCOUNT	Account Code	Character	6	M_AMDW1 M_GLDW1	ASSET_DIST_LN ACCOUNT_TBL CNVCHARTFD CURR_ACCOUNT_VW JRNL_LN	R	A code used to record and summarize financial transactions such as assets, liabilities, fund balances, revenues, expenses, statistics or budget accounts.	122100 = Accounts & Notes Receivable; 615020 = Postage/Mailings; SHR = Investment Shares
ACCOUNT_DESCR	Account Name	Character	30	M_GLDW1	ACCOUNT_TBL CURR_ACCOUNT_VW	R	The title assigned to record and summarize financial transactions such as assets, liabilities, fund balances, revenues, expenses, statistics or budget accounts.	Accounts & Notes Receivable; Postage/Mailing; Investment Shares
ACCOUNT_DESCRLONG	Account Long Description	Long	2000	M_GLDW1	ACCOUNT_TBL CURR_ACCOUNT_VW	R	A long textual description of the code used to record and summarize financial transactions such as assets, liabilities, fund balances, revenues, expenses, statistics or budget accounts.	Accounts & Notes Receivable; For all postage expenses. Used for postage related expenses, including stamps
ACCOUNT_EFF_STATUS	Account Effective Status Code	Character	1	M_GLDW1	ACCOUNT_TBL CURR_ACCOUNT_VW	R	A code specifying the current status of a U of M account.	A = Active; I = Inactive
ACCOUNT_EFFDT	Account Effective Date	Date		M_GLDW1	ACCOUNT_TBL CURR_ACCOUNT_VW	R	The date on which the account status becomes effective.	07/01/2001
ACCOUNT_GRP	Account Group Code	Character	20	M_GLDW1	ACCOUNT_TBL CURR_ACCOUNT_VW	R	A code used to group accounts. Note: sourced from the UM_ACCT_GROUP tree.	BANK-CASH; GENERAL-EXPENSES
ACCOUNT_GRP_DESCR	Account Group Description	Character	30	M_GLDW1	ACCOUNT_TBL CURR_ACCOUNT_VW	R	A textual description of the code used to group accounts.	Bank Cash; General Expenses
ACCOUNT_GRP_GASB	Account Group Governmental Accounting Standard Board Code	Character	20	M_GLDW1	ACCOUNT_TBL CURR_ACCOUNT_VW	R	A code used to group accounts for U of M to meet financial reporting standards. Note: sourced from the UM_ACCT_GASB tree.	SCHOLAR_AND_FELLOW = Scholarships and Fellowships; ACCOUNTS_PAYABLE = Accounts Payable; OTHER_REV_EXP = Other
ACCOUNT_GRP_GASB_DESCR	Account Group Governmental Accounting Standard Board Description	Character	30	M_GLDW1	ACCOUNT_TBL CURR_ACCOUNT_VW	R	A textual description of the code used to group accounts for U of M to meet financial reporting standards.	Scholarships and Fellowships; Accounts Payable; Other
ACCOUNT_GRP_ISR_BUDGET	Account Group Institute for Social Research (ISR) Budget Code	Character	6	M_GLDW1	ACCOUNT_TBL CURR_ACCOUNT_VW	R	A code used to associate expense accounts with higher-level budgetary accounts used for ISR Budget. Note: sourced from the BUD_TRAN_ACCT_ISR tree.	911100 = Administrative Salaries; 911550 = Respondents/Subjects; 911900 = Research Supplies & Services
ACCOUNT_GRP_ISR_BUDGET_DESCR	Account Group Institute for Social Research (ISR) Budget Description	Character	30	M_GLDW1	ACCOUNT_TBL CURR_ACCOUNT_VW	R	A textual description of the code used to associate expense accounts with higher-level budgetary accounts used for ISR Budgets.	Administrative Salaries; Respondents/Subjects; Research Supplies & Services

Physical Element Name	Logical Element Name	Format Type	Format Length	Data Set	Table Locations	Security Code	Element Definition	Examples of Valid Values
ACCOUNT_GRP_MED_SCH	Account Group Medical School Code	Character	20	M_GLDW1	ACCOUNT_TBL CURR_ACCOUNT_VW	R	A code used to group revenue and expense accounts that are similar in nature, and represent the Medical School's financial line descriptions from the MEDSCH_ACCT_RNG2 tree.	MS_CLINIC_EXPENSE = Clinic Expenses; MS_MALPRACTICE = Malpractice; MS_PRIMARY_CARE_SUPP = Primary Care Support
ACCOUNT_GRP_MED_SCH_DESCR	Account Group Medical School Description	Character	30	M_GLDW1	ACCOUNT_TBL CURR_ACCOUNT_VW	R	A textual description of the code used to group revenue and expense accounts that are similar in nature, and represent the Medical School's financial line descriptions from the MEDSCH_ACCT_RNG2 tree.	Clinic Expenses; Malpractice; Primary Care Support
ACCOUNT_GRP_SP_VOL_RES	Account Group Sponsored Programs Volume Research Code	Character	20	M_GLDW1	ACCOUNT_TBL CURR_ACCOUNT_VW	R	A code used to group accounts by sponsored research. Note: sourced from the SP_VOL_RESRCH_ACCT tree.	SAL_AND_WAGES = Salaries and Wages; TRANSFERS_AND_DIST = Transfers and Distributions; INDIRECT_COST = Indirect Cost
ACCOUNT_GRP_SP_VOL_RES_DESCR	Account Group Sponsored Programs Volume Research Description	Character	30	M_GLDW1	ACCOUNT_TBL CURR_ACCOUNT_VW	R	A textual description of the code used to group accounts by sponsored research.	Salaries and Wages; Transfers and Distributions; Indirect Cost
ACCOUNT_GRP_SPON_PROJ	Account Group Sponsored Project Code	Character	20	M_GLDW1	ACCOUNT_TBL CURR_ACCOUNT_VW	R	A code used to associate expense accounts with higher-level budgetary accounts used for sponsored projects. Note: sourced from the BUD_TRAN_ACCT_WP tree.	911000 = Research Salaries; 911250 = DST Salaries; 911600 = Stipends
ACCOUNT_GRP_SPON_PROJ_DESCR	Account Group Sponsored Project Description	Character	30	M_GLDW1	ACCOUNT_TBL CURR_ACCOUNT_VW	R	A textual description of the code used to associate expense accounts with higher-level budgetary accounts used for sponsored projects.	Research Salaries; DST Salaries; Stipends
ACCOUNT_GRP_SRC_USE	Account Group Source Use Code	Character	20	M_GLDW1	ACCOUNT_TBL CURR_ACCOUNT_VW	R	A code used to group accounts based on the Source/Use model. Note: sourced from the UM_SRC_USE_ACCT tree.	FED GRANTS/ CONTRACTS; GIFTS; FACULTY SALARIES
ACCOUNT_GRP_SRC_USE_DESCR	Account Group Source Use Description	Character	30	M_GLDW1	ACCOUNT_TBL CURR_ACCOUNT_VW	R	A textual description of the code used to group accounts based on the Source Use model.	Federal Grants/Contracts; Gifts; Faculty Salaries

Physical Element Name	Logical Element Name	Format Type	Format Length	Data Set	Table Locations	Security Code	Element Definition	Examples of Valid Values
ACCOUNT_GRP_SRC_USE_TYPE	Account Group Source Use Type Code	Character	10	M_GLDW1	ACCOUNT_TBL CURR_ACCOUNT_VW	R	A code indicating whether an account is a source (revenue) or a use (expense). This is used for reporting to the Office of Budget Planning. Note: sourced from the UM_SRC_USE_ACCT tree.	Source; Use
ACCOUNT_TYPE	Account Type Code	Character	1	M_GLDW1	ACCOUNT_TBL CURR_ACCOUNT_VW	R	A code used to indicate the type of account.	A = Asset; E = Expense
ACCOUNT_TYPE_DESCR	Account Type Description	Character	30	M_GLDW1	ACCOUNT_TBL CURR_ACCOUNT_VW	R	A textual description of the code used to indicate the type of account.	Asset; Expense
ACCOUNTING_DT	Accounting Date	Date		M_AMDW1	ASSET_DIST_LN COST	R	The accounting date associated with the transaction. Note: For Procurement, used in the validation and execution of budgeting and transaction postings.	01/01/1999
ACCOUNTING_PERIOD	Accounting Period Code	Number	3	M_AMDW1	ASSET_DIST_LN DEPRECIATION	R	A code used to identify the university accounting period which represents a calendar month or an adjustment period.	3; 4; 9; 998; 999
				M_GLDW1	JRNL_HEADER			
ACQUISITION_CD_DESCRSHORT	Acquisition Code Short Description	Character	10	M_AMDW1	ASSET	R	An abbreviated textual description indicating how ownership of an asset was initiated.	Constructd; Donated; Trade In
ACQUISITION_DT	Acquisition Date	Date		M_AMDW1	ASSET	R	The date an asset is received. The date is in the format MM/DD/YYYY.	06/10/1958
AGENCY_ID	Agency Identification	Character	20	M_AMDW1	ASSET_LICENSE	R	A numeric code, if available, to identify the agency issuing a license for the asset.	Intentionally left blank.
AREA_UM	Area Unit Of Measure	Character	3	M_AMDW1	ASSET_ATTRIBUTE	R	A code that represents the units by which an asset's area is measured.	ACR = Acre; SQF = Square Feet; CM = Cubic Meters
ASSET_AMOUNT	Asset Amount	Signed Number	15,2	M_AMDW1	ASSET_ACQ_DET	R	A number representing the total dollar amount of an asset which includes base price, taxes, and shipping/handling.	1,348.96; 2,790.00; 23.12
ASSET_AREA	Area	Number	13,4	M_AMDW1	ASSET_ATTRIBUTE	R	A number representing the measurable, physical area of an asset.	10.0000; 25.0000
ASSET_CAPACITY	Asset Capacity	Number	12,3	M_AMDW1	ASSET_ATTRIBUTE	R	A number representing the measurable, physical capacity of an asset.	0.000; 1.000; 12.000

Physical Element Name	Logical Element Name	Format Type	Format Length	Data Set	Table Locations	Security Code	Element Definition	Examples of Valid Values
ASSET_CATEGORY_DESCR	Asset Category Description	Character	30	M_AMDW1	ASSET_ACQ_DET COST	R	A textual description of a specific type of commodity or property.	Building Equipment; Inventory; Land Improvements
ASSET_CLASS	Asset Class	Character	10	M_AMDW1	ASSET	R	A code that identifies like assets.	200320; 112536; 115158
ASSET_CLASS_DESCR50	Asset Class Description	Character	50	M_AMDW1	ASSET	R	A textual description of the code that identifies like assets.	Copier; Fume Hood; Knives
ASSET_COLOR	Asset Color	Character	15	M_AMDW1	ASSET_ATTRIBUTE	R	The name of the predominant color by which an asset is identified.	Black; White; Red
ASSET_COMMENTS	Asset Comments	Character	2000	M_AMDW1	ASSET_COMMENTS	R	A line of text containing comments associated with a specific asset.	Free text comments.
ASSET_COMMENTS_DTTM	Asset Comments Date And Time	Date/Time		M_AMDW1	ASSET_COMMENTS	R	The date and time at which a specific comment was entered.	10/26/1999 4:26:17 PM
ASSET_COST	Asset Cost	Signed Number	15,2	M_AMDW1	COST	R	The current cost of the asset including any adjustments.	5,025.00; 2,047.68.00; 1,365.00
ASSET_COST_DTTM	Asset Cost Date Time	Date/Time		M_AMDW1	COST	R	The date and time at which a specific cost transaction for the asset was entered	02/23/1999 11:25:06 AM
ASSET_COST_DTTM	Asset Date Time	Date/Time		M_AMDW1	COST	R	The Date and time at which a specific asset cost entry was entered.	02/23/1999 11:25:06 AM
ASSET_COST_OPRID	Asset Cost Operator Identification	Character	30	M_AMDW1	COST	R	The U of M unigname of the person who entered the asset cost transaction.	DSELL; MPCONAB
ASSET_CUST_AUTH_DT	Asset Custodian Authorization Date	Date		M_AMDW1	ASSET_CUSTODIAN	R	The date on which an asset is authorized or contracted to become the temporary responsibility of another person who will be known as the custodian.	05/20/1999
ASSET_CUST_AUTH_NAME	Asset Custodian Authorizer's Name	Character	30	M_AMDW1	ASSET_CUSTODIAN	R	The name of the person granting permission to another person who will assume temporary responsibility of an asset.	Doe, John R.; Smith, Nancy
ASSET_CUSTODIAN	Asset Custodian	Character	30	M_AMDW1	ASSET_CUSTODIAN	R	The name of the person, group, department, or building assuming temporary responsibility for an asset for a contracted period of time.	Grounds & Waste; George Jetson; Fletcher Hall
ASSET_DESCR	Asset Description	Character	30	M_AMDW1	ASSET	R	A textual description of the code used to identify a particular asset.	Desk Workstation; 100-Gal Kettle/Mixer; Heat Sealer

Physical Element Name	Logical Element Name	Format Type	Format Length	Data Set	Table Locations	Security Code	Element Definition	Examples of Valid Values
ASSET_DIST_LN_AMOUNT	Asset Distribution Line Amount	Signed Number	15,2	M_AMDW1	ASSET_DIST_LN	R	A number representing the dollar amount associated with an asset's particular distribution line.	-1,777.91; -352.47; -10,800.15
ASSET_DIST_LN_DTTM	Asset Distribution Line Date Time	Date/Time		M_AMDW1	ASSET_DIST_LN	R	The date and time at which a distribution line is entered for a particular asset.	08/04/1999 10:26:17 AM
ASSET_HEIGHT	Asset Height	Number	12,3	M_AMDW1	ASSET_ATTRIBUTE	R	A number representing the measurable, physical height of an asset.	0.000; 5.000; 36.500
ASSET_ID	Asset Identification	Character	12	M_AMDW1	ASSET ASSET_ACQ_DET ASSET_ATTRIBUTE ASSET_COMMENTS ASSET_CUSTODIAN ASSET_DIST_LN ASSET_LICENSE ASSET_LOCATION ASSET_MAINT ASSET_WARRANTY BOOK COST DEPRECIATION LEGACY_PURCHASE_ DATA_VW RETIREMENT	R	A system assigned number used to uniquely identify a specific asset.	00000159; 00000231; 00000472
ASSET_LENGTH	Asset Length	Number	12,3	M_AMDW1	ASSET_ATTRIBUTE	R	A number representing the measurable, physical length of an asset.	0.000; 5.000; 456.000
ASSET_LIC_COMMENTS	Asset License Comments	Character	2000	M_AMDW1	ASSET_LICENSE	R	A line of text containing comments associated with the license on a specific asset.	Free text comments.
ASSET_LOAN	Asset Loan	Character	1	M_AMDW1	ASSET_CUSTODIAN	R	A code indicating whether there is a loan form on file.	Y = Yes; N = No
ASSET_LOAN_FORM	Asset Loan Form	Character	10	M_AMDW1	ASSET_CUSTODIAN	R	A code used to indicate the loan form number on file.	122; X182; X189
ASSET_LOC_AUTH_DT	Asset Location Authorization Date	Date		M_AMDW1	ASSET_LOCATION	R	The date on which an asset is assigned to a particular location.	12/10/1999
ASSET_LOC_AUTH_NAME	Asset Location Authorization Name	Character	30	M_AMDW1	ASSET_LOCATION	R	A code used to identify the officially recognized location of an asset.	0092-3506; 0100-MHR2022; 0101-4018
ASSET_LOC_EFF_DT	Asset Location Effective Date	Date		M_AMDW1	ASSET_LOCATION	R	The date on which an asset was physically placed or installed at a particular location.	06/29/2000
ASSET_NAME	Asset Name	Character	50	M_AMDW1	ASSET_COMMENTS	R	The name by which a person is known. Person name format is Last,First M.	Adamson, Sonya T; Holden, Peter

Physical Element Name	Logical Element Name	Format Type	Format Length	Data Set	Table Locations	Security Code	Element Definition	Examples of Valid Values
ASSET_QUANTITY	Asset Quantity	Number	13,2	M_AMDW1	ASSET_ACQ_DET COST	R	A number indicating the countable amount of an asset.	12.00; 641.43; 2,682.00
ASSET_STATUS_DESCRSHORT	Asset Status Short Description	Character	10	M_AMDW1	ASSET	R	An abbreviated textual description of the current status of an asset.	In Service; Disposed; Requested
ASSET_WARRANTY_COVERAGE	Asset Warranty Coverage	Character	2000	M_AMDW1	ASSET_WARRANTY	R	A line of text containing comments associated with coverage information in a warranty.	Free text comments.
ASSET_WEIGHT	Asset Weight	Number	12,3	M_AMDW1	ASSET_ATTRIBUTE	R	A number representing the measurable, physical weight of an asset.	0.000; 23.000; 15.220
ASSET_WIDTH	Asset Width	Number	12,3	M_AMDW1	ASSET_ATTRIBUTE	R	A number representing the measurable, physical width of an asset.	0.000; 1.000; 55.000
AUTH_STATUS	Authorization Status	Character	1	M_AMDW1	ASSET_CUSTODIAN	R	A code used to identify the status of a particular person to act as the custodian of a particular asset.	A = Authorized; N = Not Authorized; P = Pending
AUTH_STATUS_DESCRSHORT	Authorization Status Short Description	Character	10	M_AMDW1	ASSET_LOCATION	R	An abbreviated textual description used to identify the status of a particular location to receive or contain a particular asset.	Authorized; Not Auth; Pending
AVAIL_CONTACT	Available Contact	Character	30	M_AMDW1	ASSET	R	The name by which the person or group permanently responsible for an asset is known. Name format is Last,First M.	Grounds and Waste; Henry A. Ford; Argus Building
AVAIL_PHONE	Available Phone	Character	12	M_AMDW1	ASSET	R	The telephone number of the person permanently responsible for an asset.	3-4802; 4-3357; 6-7745
AVAIL_SW	Available Switch Code	Character	1	M_AMDW1	ASSET	R	A code that identifies whether a particular asset is available for resale or not.	Y = Yes; N = No
BILL_SPONSOR	Billing Sponsor Code	Character	6	M_GLDW1	CURR_PROJECT_GRANT_VW PROJECT_GRANT_TBL	R	A code representing the awarding department.	288000 = Ford Motor Company; 573040 = Michigan, State of, Education, Department of; 895700 = Health and Human Services, Department of-National Institutes of Health
BILL_SPONSOR_DESCR100	Billing Sponsor Code Description	Character	100	M_GLDW1	CURR_PROJECT_GRANT_VW PROJECT_GRANT_TBL	R	A textual description of the code representing the awarding department.	Ford Motor Company; Michigan, State of, Education, Department of; Health and Human Services, Department of-National Institutes of Health

Physical Element Name	Logical Element Name	Format Type	Format Length	Data Set	Table Locations	Security Code	Element Definition	Examples of Valid Values
BOOK	Book Value	Character	10	M_AMDW1	ASSET_DIST_LN BOOK COST DEPRECIATION RETIREMENT	R	A code representing the financial book used to track the transactions for an asset.	Corp = Corporate
BOOK_METHOD	Book Method	Character	2	M_AMDW1	BOOK	R	A code which identifies the method used to depreciate an asset. In the University's case it will always be SL (straight line).	SL = Straight Line; PC = Declining Balance; MN = Manual Depreciation
BUDG_MUST_EQUAL_REV	Budget Must Equal Revenue Code	Character	1	M_GLDW1	CURR_PROJECT_GRANT_VW PROJECT_GRANT_TBL	R	A code specifying that a budget must equal the incoming revenue.	Y = Yes; N = No
BUILDING	Building	Character	10	M_AMDW1	ASSET_LOCATION	R	A code used to indicate the building at which an asset is physically located.	2717 = North Campus Microwave Tower; 4646 = Camp Davis Eardley Cabin; 9560 = WVGR Radio Broadcasting Sta
BUILDING_DESCR50	Building Description	Character	30	M_AMDW1	ASSET_LOCATION	R	A textual description of the code used to indicate the building at which an asset is physically located.	North Campus Microwave Tower; Camp Davis Eardley Cabin; WVGR Radio Broadcasting Sta
BUSINESS_UNIT	Business Unit Code	Character	5	M_AMDW1	ASSET ASSET_ACQ_DET ASSET_ATTRIBUTE ASSET_COMMENTS ASSET_CUSTODIAN ASSET_DIST_LN ASSET_LICENSE ASSET_LOCATION ASSET_MAINT ASSET_WARRANTY BOOK COST_BAL DEPRECIATION LEGACY_PURCHASE_DATA_VW RETIREMENT	R	A code representing the highest organizational unit. This is the highest organizational unit to which an asset may belong.	HOSP = Hospital; UMICH = Main Campus
CAPACITY_UM	Capacity Unit Of Measure	Character	3	M_AMDW1	ASSET_ATTRIBUTE	R	A code that represents the units by which an asset's capacity is measured.	BBL = Barrel
CATEGORY	Category	Character	5	M_AMDW1	ASSET_ACQ_DET ASSET_DIST_LN COST DEPRECIATION	R	An alphanumeric code representing a group to which an asset belongs.	07; 08; LAND

Physical Element Name	Logical Element Name	Format Type	Format Length	Data Set	Table Locations	Security Code	Element Definition	Examples of Valid Values
CF_SEQNO	Chartfield Sequence Number	Number	6	M_AMDW1	ASSET_DIST_LN COST	R	A system assigned sequential number, which identifies a chartfield combination for an asset.	0; 1; 2; 3
CFDA_NBR	Catalog Of Federal Domestic Assistance Number Code	Number	5,3	M_GLDW1	CURR_PROJECT_GRANT_VW PROJECT_GRANT_TBL	R	A code designated by the Federal Government representing the type of grant awarded.	81.049; 93.864; 93.989;
CLASS	Class Code	Character	5	M_AMDW1	ASSET_ACQ_DET ASSET_CUSTODIAN ASSET_DIST_LN COST DEPRECIATION	R	A code used to group related activities directed towards the accomplishment of a set of common identifiable objectives or purposes.	11000 = General Academic Instruction; 21000= Departmental Research; 72000 = Utilities; 1100x = Gen Acad Instr-ICRX
				M_GLDW1	CLASS_CF_TBL CNVCHARTFD CURR_CLASS_CF_VW CURR_PROJECT_GRANT_VW JRNL_LN PROJECT_GRANT_TBL			
CLASS_DESCR	Class Name	Character	30	M_GLDW1	CLASS_CF_TBL CURR_CLASS_CF_VW	R	A textual description of the code that groups related activities directed towards the accomplishment of a set of common identifiable objectives or purposes.	General Academic Instruction; Departmental Research; Utilities; Gen Acad Instr-ICRX
CLASS_EFF_STATUS	Class Effective Status Code	Character	1	M_GLDW1	CLASS_CF_TBL CURR_CLASS_CF_VW	R	A code specifying the current status of a class.	A = Active; I = Inactive
CLASS_EFFDT	Class Effective Date	Date		M_GLDW1	CLASS_CF_TBL CURR_CLASS_CF_VW	R	The date on which the class status becomes effective.	01/01/1998
CLASS_GRP	Class Group Code	Character	20	M_GLDW1	CLASS_CF_TBL CURR_CLASS_CF_VW	R	A code used to group classes that serve a similar purpose.	INSTRUCTION; ADMINISTRATION; SCHOLARSHIPS
CLASS_GRP_DESCR	Class Group Description	Character	30	M_GLDW1	CLASS_CF_TBL CURR_CLASS_CF_VW	R	A textual description of a code used to group classes that serve a similar purpose.	Instruction Functions; Administration Functions; Scholarship Functions
CLASS2	Class2 Code	Character	5	M_GLDW1	CNVCHARTFD	R	A code used to group related activities directed towards the accomplishment of a set of common identifiable objectives or purposes. This 'second' class field is used to map legacy function codes to their Indirect Cost Recovery (ICR) excluded classes.	1100X = Gen Acad Instr-ICRX
CONTRACT_NUM	Contract Number	Character	25	M_AMDW1	ASSET_MAINT	R	A system assigned number used to uniquely identify a specific contract.	Intentionally left blank.

Physical Element Name	Logical Element Name	Format Type	Format Length	Data Set	Table Locations	Security Code	Element Definition	Examples of Valid Values
CONVENTION	Convention Code	Character	2	M_AMDW1	BOOK COST	R	A code used to identify the accounting convention used.	AM = Actual Month; FM = Following Month
CRO_EXCLUDED	Cost Reimbursement Office Excluded	Character	1	M_AMDW1	ASSET_ATTRIBUTE	R	A code which indicates how an asset should be handled for cost reimbursement calculations. This code is maintained by the Cost Reimbursement Office.	F = Federal; P = Private; O = Other
CRO_EXCLUDED_DESCR	Cost Reimbursement Office Excluded Description	Character	30	M_AMDW1	ASSET_ATTRIBUTE	R	A textual description of the code which indicates how an asset should be handled for cost reimbursement calculations. This code is maintained by the Cost Reimbursement Office.	Federal; Private; Other
CURR_NET_BK_VALUE	Current Net Book Value	Signed Number	15,2	M_AMDW1	ASSET	R	A number representing the current book value for an asset derived by subtracting the accumulated depreciation as of a specified date from the cost of the asset. This does not include 'Tax' book information.	561.39; 21,983.21; 472,970.22 17,698,343.15
CURR_NET_BK_VALUE_AS_OF_DATE	Current Net Book Value As Of Date	Date		M_AMDW1	ASSET	R	The date for which the asset's current net book value was calculated. This does not include 'Tax' book information.	12/31/2001
DEPT_BUD_SEQ	Department Budget Sequence Code	Character	20	M_GLDW1	CURR_FN_DEPT_VW FN_DEPT_TBL	R	A code used to group U of M departments by their reporting relationships for the General Fund Budget.	COLLEGE_OF_LS&A; MEDICAL_SCHOOL
DEPT_BUD_SEQ_DESCR	Department Budget Sequence Description	Character	30	M_GLDW1	CURR_FN_DEPT_VW FN_DEPT_TBL	R	A textual description of the code used to group U of M departments by their reporting relationships for the General Fund Budget.	College of Lit, Science and Arts; Medical School
DEPT_DESCR	Department Name	Character	30	M_GLDW1	CURR_FN_DEPT_VW FN_DEPT_TBL	R	A textual description of the code that identifies each academic or administrative unit that has programmatic, operational and fiscal (including budgetary) responsibility.	Physics Department; College of Lit, Science & Arts; UMH Administration
DEPT_EFF_STATUS	Department Effective Status Code	Character	1	M_GLDW1	CURR_FN_DEPT_VW FN_DEPT_TBL	R	A code specifying the current status of a U of M department.	A = Active; I = Inactive
DEPT_EFFDT	Department Effective Date	Date		M_GLDW1	CURR_FN_DEPT_VW FN_DEPT_TBL	R	The date when the department status becomes effective.	01/01/1998
DEPT_GRP	Department Group Code	Character	20	M_GLDW1	CURR_FN_DEPT_VW FN_DEPT_TBL	R	A code used to group U of M departments for reporting purposes. This code is used to group U of M schools, colleges, administrative areas, and vice presidential areas.	COLLEGE_OF_LS&A; MEDICAL_SCHOOL; UM_HOSPITAL

Physical Element Name	Logical Element Name	Format Type	Format Length	Data Set	Table Locations	Security Code	Element Definition	Examples of Valid Values
DEPT_GRP_CAMPUS	Department Group Campus Code	Character	20	M_GLDW1	CURR_FN_DEPT_VW FN_DEPT_TBL	R	A code used to identify department groups by campus.	UM_ANN-ARBOR
DEPT_GRP_CAMPUS_DESCR	Department Group Campus Description	Character	30	M_GLDW1	CURR_FN_DEPT_VW FN_DEPT_TBL	R	A textual description of the code used to identify department groups by campus.	Univ of Mich-Ann-Arbor
DEPT_GRP_DESCR	Department Group Description	Character	30	M_GLDW1	CURR_FN_DEPT_VW FN_DEPT_TBL	R	A textual description of the code used to group U of M departments for reporting purposes. This description is used to group U of M schools, colleges, administrative areas, and vice presidential areas.	College of Lit, Science and Arts; Medical School; U of M Hospital
DEPT_GRP_VP_AREA	Department Group Vice President Area Code	Character	20	M_GLDW1	CURR_FN_DEPT_VW FN_DEPT_TBL	R	A code used to group department groups by President, Vice President, or Chancellor, based on direct reporting lines.	PRVST_EXC_VP_ACA_AFF; VP_STUDENT_AFFAIRS; EXC_VP_MED_AFF
DEPT_GRP_VP_AREA_DESCR	Department Group Vice President Area Description	Character	30	M_GLDW1	CURR_FN_DEPT_VW FN_DEPT_TBL	R	A textual description of the code used to group department groups by President, Vice President, or Chancellor, based on direct reporting lines.	Provost & Exec VP Academic Aff; VP for Student Affairs; Exec. VP for Medical Affairs
DEPTID	Department Identification Code	Character	10	M_AMDW1	ASSET_ACQ_DET ASSET_CUSTODIAN ASSET_DIST_LN COST DEPRECIATION	R	A code that identifies each academic or administrative unit that has programmatic, operational and fiscal (including budgetary) responsibility.	184500 = Physics Department; 170000 = College of Lit, Science & Arts; 311679 = UMH Administration
				M_GLDW1	CNVCHARTFD CURR_FN_DEPT_VW FN_DEPT_TBL JRNL_LN			
DISPOSAL_CODE_DESCRSHORT	Disposal Code Short Description	Character	10	M_AMDW1	RETIREMENT	R	An abbreviated textual description representing how an asset was removed from active service.	Abandoned; Cannibal; Sale
DISTRIBUTION_TYPE	Distribution Type	Character	2	M_AMDW1	ASSET_DIST_LN	R	A code used to identify the type of account that is being impacted.	FA = Fixed Asset; AD = Accumulated Depreciation
DOLLAR_AMOUNT	Transaction Amount	Signed Number	15,2	M_GLDW1	JRNL_LN	R	The dollar amount associated with a financial transaction or chart of account balance.	-458.00; 763,000.00
DRDA_CNTCT_EMPLID	Division of Research Development and Administration Contact Employee Identification Code	Character	11	M_GLDW1	CURR_PROJECT_GRANT_VW PROJECT_GRANT_TBL	R	The identification number assigned to uniquely identify a person at the U of M. Commonly referred to as UMID. This identifies the Division of Research Development and Administration (DRDA) representative associated with a project/grant.	25582542

Physical Element Name	Logical Element Name	Format Type	Format Length	Data Set	Table Locations	Security Code	Element Definition	Examples of Valid Values
DRDA_CNTCT_NAME	Division of Research Development and Administration Contact Name	Character	50	M_GLDW1	CURR_PROJECT_GRANT_VW PROJECT_GRANT_TBL	R	The name of the Division of Research Development and Administration (DRDA) representative associated with a project/grant. Person name format is Last,First M.	Adamson, Sonya T; Holden, Peter
DRDA_NBR	Division of Research Development and Administration Number	Character	16	M_GLDW1	CURR_PROJECT_GRANT_VW PROJECT_GRANT_TBL	R	A code that uniquely identifies a record in the Electronic Research Proposal Management (eRPM) system. The first two digits of the code identify the fiscal year in which the record was created. The digits are system generated and sequential representing the number of submissions in the fiscal year. This code is commonly referred to as the Division Of Research Development Administration (DRDA) number, the proposal number or the Proposal Approval Form (PAF) ID. Note:If the DRDA has an "-OR" at the end, the record is a snapshot of the PAF that was originally submitted to the sponsor The OR stands for "Original" and these records should not be included when doing summary reports.	99-4563 03-00489; 08-PAF00555; 09-PAF00679-PRE; 08-PAF00555-OR
DW_DATA	Data Warehouse Data	Character	50	M_AMDW1	AMSTATUS	R	The names of the data warehouse objects that were loaded. These objects could be a data set, a group of tables or an individual table.	Asset Management Tables; jrn1_header; vendor
DW_OWNER	Data Warehouse Owner	Character	8	M_AMDW1	AMSTATUS	R	The owner (oracle schema) of the data warehouse objects that were loaded.	m_amdw1; m_gldw1
EFF_STATUS	Effective Status Code	Character	1	M_AMDW1	ASSET_WARRANTY	R	A code used to represent the status of the warranty.	A = Active; I = Inactive
EMPLID	Employee Identification Code	Character	11	M_AMDW1 M_GLDW1	ASSET_CUSTODIAN CURR_FN_DEPT_VW FN_DEPT_TBL	R	A system assigned number used to uniquely identify a person at U of M. Commonly referred to as UMID.	25582542
EXTRACT_DT	Extract Date	Date/Time		M_AMDW1	AMSTATUS	R	The date and time at which the data was extracted from the source system.	07/22/2000 7:06:17 PM

Physical Element Name	Logical Element Name	Format Type	Format Length	Data Set	Table Locations	Security Code	Element Definition	Examples of Valid Values
FERC_CD	Federal Energy Regulatory Commission Code	Character	10	M_AMDW1	ASSET	R	A code used only by the hospital to indicate the group responsible for the maintenance of an asset.	B = Biomedical Engineering; M = Maintenance; V = Vendor
FIN_OPS_CNTCT_CD	Financial Operations Contact Code	Character	4	M_GLDW1	CURR_PROJECT_GRANT_VW PROJECT_GRANT_TBL	R	A code that identifies the FinOps coordinator.	00; 37; 64
FIN_OPS_CNTCT_EMPLID	Financial Operations Contact Employee Identification Code	Character	11	M_GLDW1	CURR_PROJECT_GRANT_VW PROJECT_GRANT_TBL	R	A system assigned number to uniquely identify a person at U of M. Commonly referred to as UMID. This identifies the FinOps Coordinator associated with a project/grant.	25582542
FIN_OPS_CNTCT_NAME	Financial Operations Contact Name	Character	50	M_GLDW1	CURR_PROJECT_GRANT_VW PROJECT_GRANT_TBL	R	The name of the FinOps Coordinator associated with a project/grant. Person name format is Last,First M.	Adamson, Sonya T; Holden, Peter
FINANCIAL_ASSET_SW	Financial Asset Switch	Character	1	M_AMDW1	ASSET	R	A code that indicates whether an asset is a financial asset.	Y = Yes; N = No
FISCAL_YEAR	Fiscal Year	Number	4	M_AMDW1	ASSET_DIST_LN DEPRECIATION	R	The U of M fiscal year in the format CCYY. The U of M fiscal year runs from July through June. For example, July 1, 2000–June 30, 2001 is Fiscal Year 2001.	2000; 2001
				M_GLDW1	JRNL_HEADER			
FLOOR	Floor	Character	10	M_AMDW1	ASSET_LOCATION	R	A number uniquely identifying a floor within a building. The floor on which a particular asset is located.	01; 9M; B2
FUND_CODE	Fund Code	Character	5	M_AMDW1	ASSET_ACQ_DET ASSET_CUSTODIAN ASSET_DIST_LN COST DEPRECIATION	R	A code used to identify the source of funds and intended use of the funds.	10000 = General; 52000 = Auxiliary-Internal Services
				M_GLDW1	CNVCHARTFD CURR_FUND_VW FUND_TBL JRNL_LN			
FUND_DESCR	Fund Name	Character	30	M_GLDW1	CURR_FUND_VW FUND_TBL	R	A textual description of a code that identifies the source of funds and intended use of the funds.	General; Auxiliary-Internal Services
FUND_EFF_STATUS	Fund Effective Status Code	Character	1	M_GLDW1	CURR_FUND_VW FUND_TBL	R	A code specifying the current status of a fund.	A = Active; I = Inactive
FUND_EFFDT	Fund Effective Date	Date		M_GLDW1	CURR_FUND_VW FUND_TBL	R	The date on which the fund status becomes effective.	07/01/1998
FUND_GRP	Fund Group Code	Character	20	M_GLDW1	CURR_FUND_VW FUND_TBL	R	A code used to group funds for reporting purposes. Note: sourced from the UM_FUND_GROUP tree.	AUXILIARY = Auxiliary; PLANT = Plant

Physical Element Name	Logical Element Name	Format Type	Format Length	Data Set	Table Locations	Security Code	Element Definition	Examples of Valid Values
FUND_GRP_DESCR	Fund Group Description	Character	30	M_GLDW1	CURR_FUND_VW FUND_TBL	R	A textual description of the code used to group funds for reporting purposes.	Auxiliary; Plant
FY_NET_BK_VALUE	Fiscal Year Net Book Value	Signed Number	15,2	M_AMDW1	ASSET	R	A number representing the last fiscal year book value for an asset derived by subtracting the accumulated depreciation as of a specified date from the cost of the asset. This does not include 'Tax' book information.	561.39; 21,983.21; 472,970.22 17,698,343.15
FY_NET_BK_VALUE_AS_OF_DATE	Fiscal Year Net Book Value As Of Date	Date		M_AMDW1	ASSET	R	The date for which the asset's last fiscal year net book value was calculated. This does not include 'Tax' book information.	06/31/2001
GAIN_LOSS	Gain Loss	Signed Number	15,2	M_AMDW1	RETIREMENT	R	A number representing the total amount of gain or loss of an asset's value in dollars at the time it is retired from active service.	2,274.95; -744.09; 81.4
GL_DISTRIB_STATUS	General Ledger Distribution Status Code	Character	1	M_AMDW1	ASSET_DIST_LN	R	A code used to indicate whether the line has been moved to the general ledger.	D = Distributed; N = Not Distributed
HEIGHT_UM	Height Unit Of Measure Code	Character	3	M_AMDW1	ASSET_ATTRIBUTE	R	A code that represents the units by which an asset's height is measured.	Intentionally left blank.
IC_BASIS	Indirect Cost Basis Code	Character	4	M_GLDW1	CURR_PROJECT_GRANT_VW PROJECT_GRANT_TBL	R	A code that identifies groups of accounts eligible for indirect cost recovery.	0; 25; 50
IC_RATE_PCT	Indirect Cost Rate Percent	Number	4,2	M_GLDW1	CURR_PROJECT_GRANT_VW PROJECT_GRANT_TBL	R	The rate at which indirect cost is charged.	0.00; 30.00; 52.50
IN_SERVICE_DT	In Service Date	Date		M_AMDW1	BOOK	R	The date on which an asset is placed into active service.	10/15/1995
IN_SERVICE_FY	In Service Fiscal Year	Number	4	M_AMDW1	BOOK	R	The fiscal year in which an asset is placed into active service.	1976; 1983; 1999
IN_SERVICE_PD	In Service Period	Number	3	M_AMDW1	BOOK	R	A number representing the numeric month in which an asset is placed into active service.	2; 7; 12
INITIAL_DEPTID	Initial Department Code	Character	10	M_GLDW1	CURR_PROJECT_GRANT_VW PROJECT_GRANT_TBL	R	A code that identifies each initial academic or administrative unit that has programmatic, operational and fiscal (including budgetary) responsibility for the project/grant.	184500 = Physics Department; 170000 = College of Lit, Science & Arts
INITIAL_FUND_CODE	Initial Fund Code	Character	5	M_GLDW1	CURR_PROJECT_GRANT_VW PROJECT_GRANT_TBL	R	A code used to identify the initial source of funds and intended use of the funds for the project/grant.	10000 = General; 52000 = Auxiliary-Internal Services

Physical Element Name	Logical Element Name	Format Type	Format Length	Data Set	Table Locations	Security Code	Element Definition	Examples of Valid Values
INSPECTION_SW	Inspection Switch Code	Character	1	M_AMDW1	ASSET_LICENSE ASSET_MAINT	R	A code that indicates if an asset must be inspected before it is placed in/back in service.	Y = Yes; N = No
INVOICE_DT	Invoice Date	Date		M_AMDW1	ASSET_ACQ_DET ASSET_MAINT	R	The date on which an invoice was created for an asset.	03/14/2000
INVOICE_ID	Invoice Identification	Character	30	M_AMDW1	ASSET_ACQ_DET ASSET_MAINT	R	A system assigned number used to uniquely identify a specific invoice.	431132; 627846; 431132
ISR_REPORT_GRP	Institute for Social Research Report Group Code	Character	20	M_GLDW1	CURR_PROJECT_GRANT_VW PROJECT_GRANT_TBL	R	A code used to group Institute of Social Research project grants for reporting purposes.	1000 = Direct Cost of Research; 3100 = Center Administration; 5200 = Central Service
ISR_REPORT_GRP_DESCR	Institute for Social Research Report Group Description	Character	30	M_GLDW1	CURR_PROJECT_GRANT_VW PROJECT_GRANT_TBL	R	A textual description of the code used to group Institute of Social Research project grants for reporting purposes.	Direct Cost of Research; Center Administration; Central Service
ISR_REPORT_SUBGRP	Institute for Social Research Report Subgroup Code	Character	20	M_GLDW1	CURR_PROJECT_GRANT_VW PROJECT_GRANT_TBL	R	A code used to further group Institute of Social Research project grants within a report group.	1020 = Center Sundries; 3120 = Leadership Funds; 5230 = Human Resources
ISR_REPORT_SUBGRP_DESCR	Institute for Social Research Report Subgroup Description	Character	30	M_GLDW1	CURR_PROJECT_GRANT_VW PROJECT_GRANT_TBL	R	A textual description of the code used further group Institute of Social Research project grants within a report group.	Center Sundries; Leadership Funds; Human Resources
IU_MAP_KEY	Inter Unit Map Key	Number	3	M_AMDW1	ASSET_DIST_LN COST	R	A number used for transaction processing of inter-unit transfers. Not of significant value for reporting.	1; 2; 3; 4; 5
JOURNAL_AUTH_EMPLID	Journal Authorizer Employee Identification Code	Character	11	M_GLDW1	JRNL_HEADER	R	A system assigned number used to uniquely identify a person at U of M. Commonly referred to as UMID. This identifies the person responsible for journal entry authorization.	25582542
JOURNAL_AUTH_NAME	Journal Authorizer Name	Character	50	M_GLDW1	JRNL_HEADER	R	The name of the person responsible for journal entry authorization. Person name format is LAST,FIRST M.	ADAMSON, SONYA T; HOLDEN, PETER
JOURNAL_AUTH_PHONE	Journal Authorizer Phone	Character	24	M_GLDW1	JRNL_HEADER	R	The telephone number of the person responsible for journal entry authorization.	718/654-3312; 418/123-4567
JOURNAL_DATE	Journal Date	Date		M_AMDW1 M_GLDW1	ASSET_DIST_LN JRNL_HEADER JRNL_LN	R	The date of the journal transaction.	07/12/2000
JOURNAL_DESCR254	Journal Description	Character	254	M_GLDW1	JRNL_HEADER	R	A description of the journal transaction.	AP Accruals; Transfer funds to support program

Physical Element Name	Logical Element Name	Format Type	Format Length	Data Set	Table Locations	Security Code	Element Definition	Examples of Valid Values
JOURNAL_ENTERED_OPRID	Journal Entered Operator Identification	Character	30	M_GLDW1	JRNL_HEADER	R	A code representing the operator identification of the person who entered the journal transaction into the system.	DSELL; MPCONAB
JOURNAL_ID	Journal Identification	Character	10	M_AMDW1	ASSET_DIST_LN	R	An alphanumeric number identifying a journal transaction.	AP00108100 = AP Accruals; 0000104838 = Transfer funds to support program
				M_GLDW1	JRNL_HEADER JRNL_LN			
JOURNAL_LINE	Journal Line	Number	9	M_AMDW1	ASSET_DIST_LN	R	The line number of the journal transaction.	3; 11; 20; 1010
				M_GLDW1	JRNL_LN			
JOURNAL_LINE_DESCR	Journal Line Transaction Description	Character	30	M_GLDW1	JRNL_LN	R	A textual description of the journal line.	AP Accrual; Balancing Cash; Miscellaneous Supplies
JRNL_LN_RECON_FLG	Journal Line Reconciliation Flag	Character	1	M_GLDW1	JRNL_LN	R	A code indicating whether a journal line has been reconciled or not.	Y = Yes; N = No
JRNL_LN_RECON_LAST_UPDATE_BY	Journal Line Reconciliation Last Update By Code	Character	30	M_GLDW1	JRNL_LN	R	The operator identification of last person to have reconciled or to have added a note to the journal line.	RKLAFFKE; DSELL
JRNL_LN_RECON_LAST_UPDATE_DT	Journal Line Reconciliation Last Update Date	Date		M_GLDW1	JRNL_LN	R	The date on which the journal line reconciliation or note was last updated.	01/10/1999
JRNL_LN_RECON_NOTE	Journal Line Reconciliation Note	Character	254	M_GLDW1	JRNL_LN	R	The reconciliation notes related to a journal line.	JE'd to Dept. Divisions for sending a medical student to an international conference.
JRNL_LN_REF	Journal Line Reference Number	Character	10	M_GLDW1	JRNL_LN	R	An alpha numeric reference for a journal line assigned by a user.	AP; C471896
JOURNAL_SOURCE	Journal Source Code	Character	3	M_GLDW1	JRNL_HEADER	R	A user or system assigned code used to identify the source for the Journal Entry. This identifies whether the Journal Entry is from a sub system, a specific department, an allocation, etc.	AP = Generated from Accts. Payable; LSA = LSA JE User; IDC = Indirect Cost Allocation
JOURNAL_SOURCE_DESCR	Journal Source Description	Character	30	M_GLDW1	JRNL_HEADER	R	A textual description of the code used to identify the source for the Journal Entry. This identifies whether the Journal Entry is from a sub system, a specific department, an allocation, etc.	Generated from Accts. Payable; LSA JE User; Indirect Cost Allocation
JOURNAL_SYSTEM_SOURCE	Journal System Code Source	Character	3	M_GLDW1	JRNL_HEADER	R	A system assigned code used to identify the system source for the Journal Entry.	GBI = JnlGen – Billing; PNL = PS/GL Journal Entry Page; EXT = PS/GL External Journal
LABOR_COST	Labor Cost	Signed Number	15,2	M_AMDW1	ASSET_MAINT	R	A number representing the total dollar amount of the cost of the labor used to maintain an asset.	Intentionally left blank.

Physical Element Name	Logical Element Name	Format Type	Format Length	Data Set	Table Locations	Security Code	Element Definition	Examples of Valid Values
LABOR_HOURS	Labor Hours	Number	5	M_AMDW1	ASSET_MAINT	R	A number representing the hours attributed to labor to maintain an asset.	Intentionally left blank.
LEGACY_PURCHASE_DATA_#	Legacy Purchase Data Number	Character	2000	M_AMDW1	LEGACY_PURCHASE_DATA_VW	R	The legacy account number for an asset purchased prior to 07/01/98.	018123; 033117; 941435
LENGTH_UM	Length Unit Of Measure Code	Character	3	M_AMDW1	ASSET_ATTRIBUTE	R	A code that represents the units by which an asset's length is measured.	FT = Foot
LIC_END_DT	License End Date	Date		M_AMDW1	ASSET_LICENSE	R	The date on which an asset's license expires.	08/24/2002
LIC_START_DT	License Start Date	Date		M_AMDW1	ASSET_LICENSE	R	The date on which an asset's license becomes effective.	08/24/1992
LIFE	Life	Number	4	M_AMDW1	BOOK	R	A number representing the total number of months for which an asset may be placed in active service.	60; 120; 180
LIFE_REMAINING	Life Remaining	Signed Number	4	M_AMDW1	BOOK	R	A number representing the total number of months for which an asset may remain in active service.	60; 120; 180
LOAD_DT	Load Date	Date/Time		M_AMDW1	AMSTATUS	R	The date and time at which the data was loaded into the data warehouse. This data may have been loaded into a single table, a group of tables or an entire data set, as designated by the information provided in the field DW_DATA.	08/04/2000 11:40:13 AM
LOC_FUNDED	Letter Of Credit Funded/Reported Code	Character	1	M_GLDW1	CURR_PROJECT_GRANT_VW PROJECT_GRANT_TBL	R	A code that identifies whether project/grants with a Letter of Credit (LOC) payment type are currently being funded by the LOC allocation process.	Y = Yes; N = No
LOCATION	Location	Character	10	M_AMDW1	ASSET_LOCATION	R	A code used to indicate the location of a particular asset.	205658; 205711; 205086
LOCATION_DESCR	Location Description	Character	30	M_AMDW1	ASSET_LOCATION	R	A textual description of the location of a particular asset.	0301-3420D; 0301-3430B; 0301-44410D
MAINT_DTTM	Maintenance Date Time	Date/Time		M_AMDW1	ASSET_MAINT	R	The date and time at which maintenance or repair was last performed on an asset.	Intentionally left blank.
MAINT_STATUS_DESCRSHORT	Maintenance Status Short Description	Character	10	M_AMDW1	ASSET_MAINT	R	An abbreviated textual description of the status of the maintenance being performed on an asset.	In Process; Pickup; Scheduled

Physical Element Name	Logical Element Name	Format Type	Format Length	Data Set	Table Locations	Security Code	Element Definition	Examples of Valid Values
MAINT_TYPE	Maintenance Type Code	Character	10	M_AMDW1	ASSET_MAINT	R	A code representing the type of maintenance that was done on an asset.	Intentionally left blank.
MAINT_TYPE_DESCR	Maintenance Type Description	Character	30	M_AMDW1	ASSET_MAINT	R	A textual description of the type of maintenance that was performed on an asset.	Tune-Up
MANUFACTUR_CONTACT	Manufacture Contact	Character	30	M_AMDW1	ASSET	R	The name by which the person is known who is the primary contact for an asset's manufacturer. Name format is Last,First M.	Lane, Lois; Kent, Clark
MANUFACTURER_ID	Manufacturer Identification	Character	50	M_AMDW1	ASSET	R	A code that identifies the manufacturer of an asset or item.	0149 = DRAKE WILLOCK DIV CD MEDICAL; 0330 = MONROE ELECTRONICS INC; 10079 = PATIENT FOCUS SYSTEMS; DIXIE = DIXIE; KENDALL SH = KENDALL SHERWOOD-DAVIS & GECK
MANUFACTURER_NAME	Manufacturer Name	Character	30	M_AMDW1	ASSET	R	The name by which the manufacturer of an asset is known.	DRAKE WILLOCK DIV CD MEDICAL; MONROE ELECTRONICS INC; PATIENT FOCUS SYSTEMS; DIXIE; KENDALL SHERWOOD-DAVIS & GECK
MATERIALS_COST	Materials Cost	Signed Number	15,2	M_AMDW1	ASSET_MAINT	R	A number representing the total dollar amount of the cost of the materials used in maintaining or repairing an asset.	Intentionally left blank.
MINORITY_SUB	Minority Subcontract Code	Character	1	M_GLDW1	CURR_PROJECT_GRANT_VW PROJECT_GRANT_TBL	R	A code that identifies whether a sponsored project/grant is a minority sub contract.	Y = Yes; N = No
MODEL	Model	Character	30	M_AMDW1	ASSET	R	A code assigned by the manufacturer of an asset indicating an asset's model type.	RC3; MINOT CUSTOM; 1036A
NEW_ASSET_SW	New Asset Switch	Character	1	M_AMDW1	ASSET	R	A code that identifies whether an asset is first being received from a manufacturer as a new item.	Y = Yes; N = No
OTHER_COST	Other Cost	Signed Number	15,2	M_AMDW1	ASSET_MAINT	R	A number representing the total dollar amount of costs additional to labor and materials in the maintenance or repair of an asset.	Intentionally left blank.
PARENT_DESCR	Parent Description	Character	30	M_AMDW1	ASSET	R	A textual description of the asset number that is used to group other assets in a parent/child relationship.	Dearborn Science Building; Crisler Arena; Bursley Hall

Physical Element Name	Logical Element Name	Format Type	Format Length	Data Set	Table Locations	Security Code	Element Definition	Examples of Valid Values
PARENT_ID	Parent Identification	Character	12	M_AMDW1	ASSET	R	A system assigned asset number that is used to group other assets in a parent/child relationship.	1001009 = Dearborn Science Building; 1000700 = Crisler Arena; 1000555 = Bursley Hall
PARENT_PROJ_GRANT	Parent Project/Grant	Character	15	M_GLDW1	CURR_PROJECT_GRANT_VW PROJECT_GRANT_TBL	R	The project/grant number of the parent project/grant.	C023493 = Fast neutron cross section; C029988 = Neurotransmitters and calmodul
PAYMENT_TYPE	Payment Type Code	Character	2	M_GLDW1	CURR_PROJECT_GRANT_VW PROJECT_GRANT_TBL	R	A code used to indicate the funding arrangement with the sponsor.	AD = Advnce Pay; CR = Cost Reimb; FP = Fix Price; LC = LOC; PS = Pay Sched
PC_DISTRIB_STATUS	Project Costing Distribution Status Code	Character	1	M_AMDW1	ASSET_DIST_LN	R	A code to indicate whether the line has been moved to Project Costing.	D = Distributed; N = Not Distributed
PERIOD_DEPR	Period Depreciation	Signed Number	15,4	M_AMDW1	DEPRECIATION	R	A number representing the amount of depreciation for the given period.	Intentionally left blank.
PO_ID	Purchase Order Identification Number	Character	10	M_AMDW1	ASSET_ACQ_DET ASSET_MAINT	R	A system assigned number used to uniquely identify a specific order.	3000000298; 3000000035
POWER_RATING	Power Rating	Number	12,3	M_AMDW1	ASSET_ATTRIBUTE	R	A number representing the measurable, calculated rating of an asset's power.	0.000; 23.000; 123.000
POWER_RATING_UM	Power Rating Unit Of Measure Code	Character	3	M_AMDW1	ASSET_ATTRIBUTE	R	A code that represents the units by which an asset's power is measured.	KWH = Kilowatt Hours
PROFILE_DESCR	Profile Description	Character	30	M_AMDW1	ASSET	R	A textual description of the code representing a grouping of assets with like attributes or useful lives.	8 year Clinical Equipment; Projector/Mail – 1 yr; Seating Furniture/Furnish – 16 yr
PROFILE_ID	Profile Identification Code	Character	10	M_AMDW1	ASSET	R	A code representing a grouping of assets with like attributes or useful lives.	Clinical 7 = 8 year Clinical Equipment; Proj/Mail = Projector/Mail – 1 yr; Seating = Seating Furniture/Furnish – 16 yr

Physical Element Name	Logical Element Name	Format Type	Format Length	Data Set	Table Locations	Security Code	Element Definition	Examples of Valid Values
PROGRAM_CODE	Program Code	Character	5	M_AMDW1 M_GLDW1	ASSET_ACQ_DET ASSET_CUSTODIAN ASSET_DIST_LN COST DEPRECIATION CNVCHARTFD CURR_PROGRAM_VW CURR_PROJECT_GRANT_VW PROGRAM_TBL PROJECT_GRANT_TBL JRNL_LN	R	A code identifying a group of related activities, cost centers, revenue centers, responsibility centers and academic programs. These activities may occur within a single department or across multiple departments.	ADMIS = Admissions; RERET = Recruitment & Retention
PROGRAM_DESCR	Program Name	Character	30	M_GLDW1	CURR_PROGRAM_VW PROGRAM_TBL	R	The name identifying a group of related activities, cost centers, revenue centers, responsibility centers and academic programs.	Admissions; Recruitment & Retention
PROGRAM_EFF_STATUS	Program Effective Status Code	Character	1	M_GLDW1	CURR_PROGRAM_VW PROGRAM_TBL	R	A code specifying the current status of a program.	A = Active; I = Inactive
PROGRAM_EFFDT	Program Effective Date	Date		M_GLDW1	CURR_PROGRAM_VW PROGRAM_TBL	R	The date on which the program status becomes effective.	01/01/1998
PROJ_GRANT_STATUS	Project/Grant Status Code	Character	1	M_GLDW1	CURR_PROJECT_GRANT_VW PROJECT_GRANT_TBL	R	A code specifying the current status of a project/grant.	A = Approved; H = Hardship; K = Capital;
PROJ_GRT_BILLED_BY	Project/Grant Billed By Code	Character	1	M_GLDW1	CURR_PROJECT_GRANT_VW PROJECT_GRANT_TBL	R	A code representing the billing method if the project/grant is designated as the primary project/grant used in correspondence with the sponsor.	B = AR Interface; E = AR Manual Billing; D = PI Department
PROJ_GRT_BUD_PERIOD_END_DT	Project/Grant Budget Period End Date	Date		M_GLDW1	CURR_PROJECT_GRANT_VW PROJECT_GRANT_TBL	R	The date on which the project/grant budgeting period ends. The end date is in the format MM/DD/YYYY.	04/30/2002
PROJ_GRT_BUD_PERIOD_START_DT	Project/Grant Budget Period Start Date	Date		M_GLDW1	CURR_PROJECT_GRANT_VW PROJECT_GRANT_TBL	R	The date on which the project/grant budgeting period begins. The start date is in the format MM/DD/YYYY.	04/30/2002
PROJ_GRT_DIR_CNTCT_EMPLID	Project/Grant Director Contact Employee Identification Code	Character	11	M_GLDW1	CURR_PROJECT_GRANT_VW PROJECT_GRANT_TBL	R	A system assigned number used to uniquely identify a person at U of M. Commonly referred to as UMID. This identifies the project director associated with a project/grant.	25582542
PROJ_GRT_DIR_CNTCT_NAME	Project/Grant Director Contact Name	Character	50	M_GLDW1	CURR_PROJECT_GRANT_VW PROJECT_GRANT_TBL	R	The name of the project director associated with a project/grant. Person name format is Last,First M.	Adamson, Sonya T; Holden, Peter

Physical Element Name	Logical Element Name	Format Type	Format Length	Data Set	Table Locations	Security Code	Element Definition	Examples of Valid Values
PROJECT_GRANT	Project/Grant Code	Character	15	M_AMDW1	ASSET_ACQ_DET ASSET_CUSTODIAN ASSET_DIST_LN COST DEPRECIATION	R	A code used to accumulate financial information on a set of activities over a limited time span. Used for contracts and grants, construction projects and unit-defined projects.	C026993; F000101
				M_GLDW1	CNVCHARTFD CURR_PROJECT_GRANT_VW JRNL_LN PROJECT_GRANT_TBL			
PROJECT_GRANT_EFF_STATUS	Project/Grant Effective Status Code	Character	1	M_GLDW1	CURR_PROJECT_GRANT_VW PROJECT_GRANT_TBL	R	A code identifying the current status of a project/grant.	A = Active; I = Inactive
PROJECT_GRANT_EFFDT	Project/Grant Effective Date	Date		M_GLDW1	CURR_PROJECT_GRANT_VW PROJECT_GRANT_TBL	R	The date on which the project/grant status becomes effective.	01/01/1998
PROJECT_GRANT_END_DT	Project/Grant End Date	Date		M_GLDW1	CURR_PROJECT_GRANT_VW PROJECT_GRANT_TBL	R	The date on which the project/grant ends.	01/01/1999
PROJECT_GRANT_START_DT	Project/Grant Start Date	Date		M_GLDW1	CURR_PROJECT_GRANT_VW PROJECT_GRANT_TBL	R	The date on which the project/grant starts.	01/01/1998
PROJECT_GRANT_TITLE	Project/Grant Title	Character	75	M_GLDW1	CURR_PROJECT_GRANT_VW PROJECT_GRANT_TBL	R	The title for a project/grant.	Studies Of Human Mutation Rates; Core B - Clarke
PROJECT_GRANT_TYPE	Project/Grant Type Code	Character	2	M_GLDW1	CURR_PROJECT_GRANT_VW PROJECT_GRANT_TBL	R	A code used to indicate the type of a project/grant.	GR = Grant; CT = Contract
REFERENCE_ID	Reference Identification	Character	10	M_AMDW1	ASSET_ACQ_DET	R	A number representing the purchase request associated with an asset. Generally it is the document that precipitated a purchase order.	004882; 019474; 016244
REGISTER_NAME	Register Name	Character	30	M_AMDW1	ASSET_LICENSE	R	The name of the person whose name appears on an asset's registration card that is submitted to the vendor. Name format is Last,First M.	Murphy, Eddie; Martin, Steve
REGISTRATION_NO	Registration Number	Character	25	M_AMDW1	ASSET_LICENSE	R	A unique, vendor assigned number appearing on the vendor's registration form for a particular asset.	415187
REPLACE_ASSET_ID	Replace Asset Identification	Character	12	M_AMDW1	ASSET	R	A number representing the Asset ID of an asset that will be placed into active service to replace an asset that will be taken out of active service.	00000159; 00000231; 00000472

Physical Element Name	Logical Element Name	Format Type	Format Length	Data Set	Table Locations	Security Code	Element Definition	Examples of Valid Values
REPLACE_SW	Replace Switch	Character	1	M_AMDW1	ASSET	R	A code that identifies whether an asset has replaced another asset.	Y = Yes; N = No
REPLACEMENT_COST	Replacement Cost	Signed Number	15,2	M_AMDW1	ASSET	R	A number representing the dollar amount assigned to an asset representing the difference between the cost of the original asset and the cost of the replacement asset.	0.00; 139.98; 152,775.00
REPORTING_BUDGET_AMT	Reporting Budget Amount	Signed Number	15,2	M_GLDW1	CURR_PROJECT_GRANT_VW PROJECT_GRANT_TBL	R	A number representing the dollar amount used for budget reporting. Only used for non-sponsored project grants.	0; 1125.00; 5,000,000.00
RESPONSIBILITY	Responsibility	Character	30	M_AMDW1	ASSET_MAINT	R	The name of the person responsible for maintaining and or repairing an asset. Name format is Last,First M.	Schmoe, Joseph A
RETIREMENT_DT	Retirement Date	Date		M_AMDW1	RETIREMENT	R	The date on which an asset is retired and removed from active service.	06/29/2029
REVERSAL_CD	Reversal Code	Character	1	M_GLDW1	JRNL_HEADER	R	A code indicating whether the journal is an automatic reversal or will have an automatic reversing entry created and what the date option is for the reversal.	B = Beginning of Next Period; D = On Date Specified by User; E = End of Next Period; N = Do Not Generate Reversal; R = Created by Reversal Process
REVERSAL_DATE	Reversal Date	Date		M_GLDW1	JRNL_HEADER	R	The date of the reversing entry.	01/01/1998
ROOM	Room	Character	10	M_AMDW1	ASSET_LOCATION	R	A code used to indicate the room in which a particular asset is located.	1009; 1010BSW; 2040X
SALVAGE_VAL	Salvage Value	Signed Number	15,2	M_AMDW1	BOOK	R	A number representing the total dollar amount of the value an asset retains upon completion of its useful life. This number is used in the depreciation calculations by subtracting it from the asset cost to determine the depreciation basis.	137,847.52; 212.27; 6,200.00
SEQUENCE_NBR_6	Sequence Number 6	Number	6	M_AMDW1	ASSET_ACQ_DET	R	A system assigned sequential number used in conjunction with Business Unit and Asset_ID in the ASSET_ACQ_DET table to uniquely identify the acquisition details of an asset.	0; 1; 2

Physical Element Name	Logical Element Name	Format Type	Format Length	Data Set	Table Locations	Security Code	Element Definition	Examples of Valid Values
SERIAL_ID	Serial Identification	Character	20	M_AMDW1	ASSET	R	A code assigned by the manufacturer and affixed to the asset providing unique identification of that asset to the manufacturer.	801279; DTD0125; 191027
SHORTCODE	ShortCode Number	Character	6	M_GLDW1	CNVCHARTFD	R	A code that represents a unique combination (blank and non-blank) of chartfields; fund, department, class, program, and project/grant	000094 = USDA-6J89B; 012984 = VA Hospital/Med Admin; 035677 = Research Agreement (SAE)
SHORTCODE_DESCR50	ShortCode Description	Character	50	M_GLDW1	CNVCHARTFD	R	A textual description of the code that represents a unique combination (blank and non-blank) of chartfields; fund, department, class, program, and project/grant.	USDA-6J89B; VA Hospital/Med Admin ; Research Agreement (SAE)
SHORTCODE_STATUS	ShortCode Status Code	Character	1	M_GLDW1	CNVCHARTFD	R	A code representing the current disposition of the shortcode.	C = Closed; E = Endowment; O = Open; T = Terminated
SHORTCODE_STATUS_DESCRSHORT	ShortCode Status Short Description	Character	10	M_GLDW1	CNVCHARTFD	R	An abbreviated description of the current disposition of the shortcode.	Closed; Endowment; Open; Terminated
SINGLE_ADMIN_CNTCT_EMPLID	Single Administrative Contact Employee Identification Code	Character	11	M_GLDW1	CURR_PROJECT_GRANT_VW PROJECT_GRANT_TBL	R	A system assigned number used to uniquely identify a person at U of M. Commonly referred to as UMID. This identifies the single administrative point of contact associated with a project/grant.	25582542
SINGLE_ADMIN_CNTCT_NAME	Single Administrative Contact Name	Character	50	M_GLDW1	CURR_PROJECT_GRANT_VW PROJECT_GRANT_TBL	R	The name of the single administrative point of contact associated with the project/grant. Person name format is Last,First M.	Adamson, Sonya T; Holden, Peter
SPONSOR	Sponsor Code	Character	6	M_GLDW1	CURR_PROJECT_GRANT_VW PROJECT_GRANT_TBL	R	A code identifying the sponsor or donor of funds of the project/grant.	907200 = National Aeronautics and Space Admin.; 023000 = Alumni Association
SPONSOR_AWARD	Sponsor Award Number	Character	30	M_GLDW1	CURR_PROJECT_GRANT_VW PROJECT_GRANT_TBL	R	A number from the sponsor that identifies the award.	DMS-9622837
SPONSOR_CLASS	Sponsor Class Code	Character	2	M_GLDW1	CURR_PROJECT_GRANT_VW PROJECT_GRANT_TBL	R	A code that classifies sponsors according to its business.	01 = US Government; 03 = US Foundations; 16 = Endowment
SPONSOR_CLASS_DESCR	Sponsor Class Description	Character	30	M_GLDW1	CURR_PROJECT_GRANT_VW PROJECT_GRANT_TBL	R	A textual description of the code that classifies sponsors according to its business.	US Government; US Foundations; Endowment

Physical Element Name	Logical Element Name	Format Type	Format Length	Data Set	Table Locations	Security Code	Element Definition	Examples of Valid Values
SPONSOR_DESCR100	Sponsor Description	Character	100	M_GLDW1	CURR_PROJECT_GRANT_VW PROJECT_GRANT_TBL	R	A textual description of the code identifying the sponsor, donor or other source of funds of a project/grant.	National Aeronautics and Space Admin.; Alumni Association
SPONSOR_DOC_NBR	Sponsor Document Number	Character	20	M_GLDW1	CURR_PROJECT_GRANT_VW PROJECT_GRANT_TBL	R	Letter of Credit (LOC) document number assigned by the sponsor.	9321959; 9321986; 9322106
SPONSOR_TYPE	Sponsor Type Code	Character	1	M_GLDW1	CURR_PROJECT_GRANT_VW PROJECT_GRANT_TBL	R	A code used to indicate the type of sponsor.	F = Federal; I = Internal; N = Non-Federal
SPONSOR_TYPE_DESCR	Sponsor Type Description	Character	30	M_GLDW1	CURR_PROJECT_GRANT_VW PROJECT_GRANT_TBL	R	A textual description of the code used to indicate the type of sponsor.	Federal; Internal; Non-Federal
SUB_CONTRACT_AWARDEE	Sub Contract Awardee Code	Character	6	M_GLDW1	CURR_PROJECT_GRANT_VW PROJECT_GRANT_TBL	R	A code used to identify a sub contract awardee related to a sponsor project grant.	420900 = Johns Hopkins University; 573600 = Michigan State University; 584415 = Minority Suburban Migration
SUB_CONTRACT_AWARDEE_DESCR100	Sub Contract Awardee Description	Character	100	M_GLDW1	CURR_PROJECT_GRANT_VW PROJECT_GRANT_TBL	R	A textual description of the code used to identify a sub contract awardee related to a sponsor project grant.	Johns Hopkins University; Michigan State University; Minority Suburban Migration
TAG_NUMBER	Tag Number	Character	12	M_AMDW1	ASSET LEGACY_PURCHASE_DATA_VW	R	A University assigned code affixed to an asset, uniquely identifying the asset as university property.	212; 1375; 908799
TAGGABLE_SW	Taggable Switch	Character	1	M_AMDW1	ASSET	R	A code representing whether an asset has a U-M tag affixed to it.	Y = Yes; N = No
TAGR_NUM	Tagger Number	Character	1	M_AMDW1	ASSET_ATTRIBUTE	R	A code representing the person who tagged the asset.	1; B
TRANS_DATE	Transaction Date	Date		M_AMDW1	COST	R	The date on which the transaction occurred. For Cost transactions, the date on which the transaction occurred involving an asset.	01/01/1999
TRANS_IN_OUT	Transfer In Out	Character	1	M_AMDW1	ASSET_DIST_LN COST	R	A code indicating the "in" or "out" side of a transfer.	I = In; O = Out
TRANS_REF_NUM	Transaction Reference Number	Character	8	M_GLDW1	JRNL_HEADER	R	A number representing a user defined reference to a transaction.	00-653; 3/B1/00; KK000306; RTF-0159
TRANS_TYPE	Transaction Type	Character	3	M_AMDW1	ASSET_DIST_LN COST DEPRECIATION	R	A code representing the type of transaction performed.	ADD =Add ; RCI = Reinstatement; TRF =Transfer
TRANS_TYPE_DESCR	Transaction Type Description	Character	30	M_AMDW1	COST	R	A textual description of the code representing the type of transaction performed.	Add; Reinstate; Transfer

Physical Element Name	Logical Element Name	Format Type	Format Length	Data Set	Table Locations	Security Code	Element Definition	Examples of Valid Values
TXN_AMOUNT	Taxation Amount	Signed Number	15,2	M_AMDW1	ASSET_DIST_LN	R	The dollar amount that an asset is taxed in a fiscal year.	-388.60; -2,274.95; -10,800.15
VENDOR_ID	Vendor Identification Number	Character	10	M_AMDW1	ASSET_ACQ_DET ASSET_LICENSE ASSET_WARRANTY	R	A system assigned number used to uniquely identify a vendor.	0000001174; 0000000254
VENDOR_NAME1	Vendor Name	Character	40	M_AMDW1	ASSET_ACQ_DET	R	The primary name associated with a vendor.	Flexsteel Inc; Gartner Group Incorporated; IBM Corporation
VOUCHER_ID	Voucher Identification Number	Character	8	M_AMDW1	ASSET_ACQ_DET ASSET_MAINT	R	A system assigned number used to uniquely identify a voucher.	40000001; 40000417
WARRANTY_END_DT	Warranty End Date	Date		M_AMDW1	ASSET_WARRANTY	R	The date on which an asset's warranty expires.	03/22/2003
WARRANTY_NUM	Warranty Number	Character	30	M_AMDW1	ASSET_WARRANTY	R	A code indicating the manufacturer's warranty number for a particular asset.	Intentionally left blank.
WARRANTY_SW	Warranty Switch	Character	1	M_AMDW1	ASSET_MAINT	R	A code indicating whether an asset has a warranty.	Y = Yes; N = No
WEIGHT_UM	Weight Unit Of Measure Code	Character	3	M_AMDW1	ASSET_ATTRIBUTE	R	A code that represents the units by which an asset's weight is measured.	LBS = Pounds
WIDTH_UM	Width Unit Of Measure Code	Character	3	M_AMDW1	ASSET_ATTRIBUTE	R	A code that represents the units by which an asset's width is measured.	Intentionally left blank.