

---

U-M Data Warehouse

# **Legacy Financial Data Dictionary**

---

Michigan Administrative Information Services  
University of Michigan  
April 2006



# Legacy Financial Data Dictionary

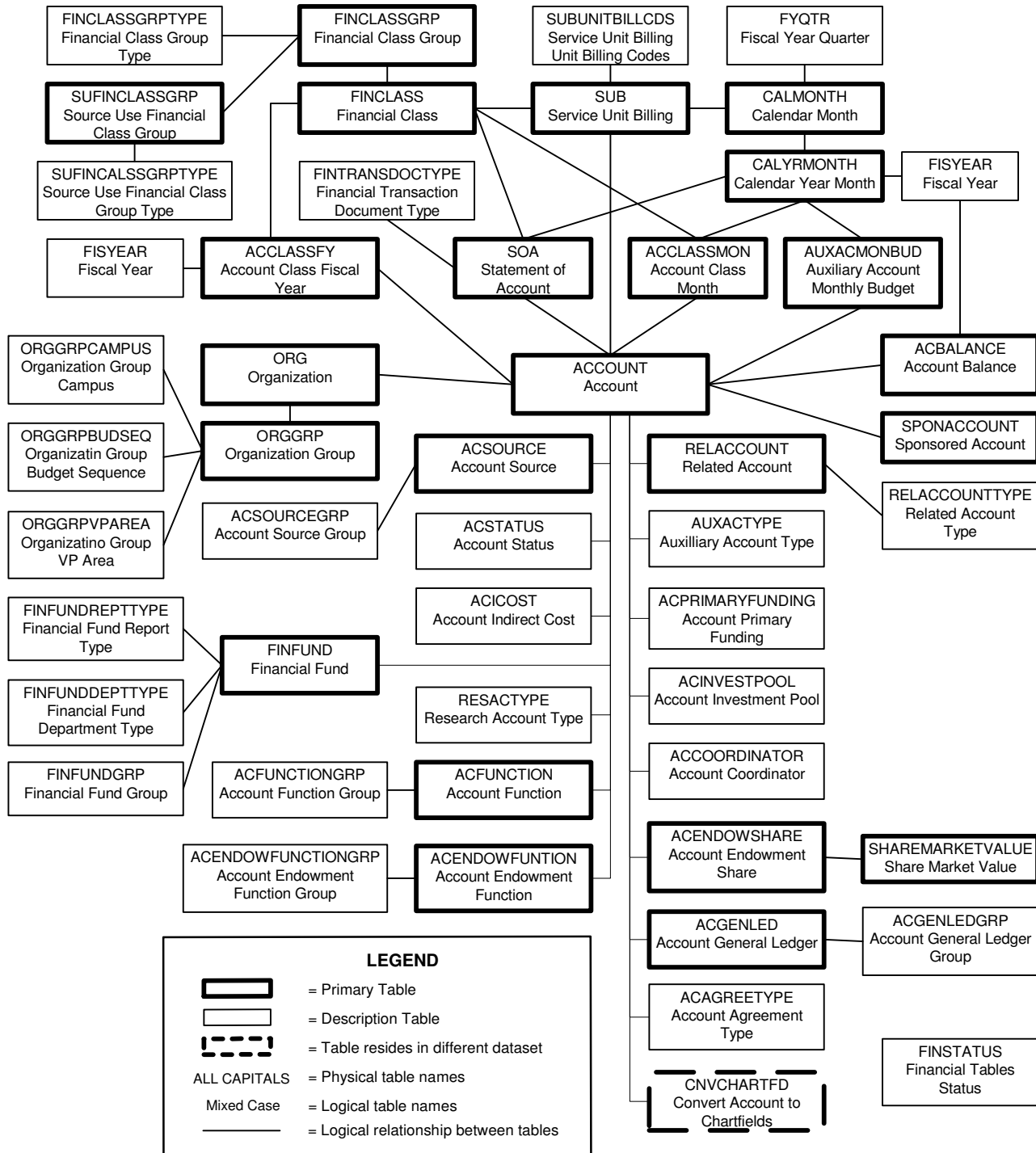
## Contents of This Guide

	Page
Legacy Financial Tables Overview Diagram	1
Legacy Financial Tables Description	2
Legacy Financial Primary Tables Diagram	6
Legacy Financial Description Tables Diagram	7
Legacy Financial Data Element Dictionary	8



# Legacy Financial Tables Overview Diagram

The Legacy Financial Tables Overview Diagram illustrates the logical relationships among the Legacy Financial tables. A logical link (connecting line) between two tables indicates that there is a direct relationship between the two tables. Physically, any tables with a common element can be joined. However, two tables with common elements may not necessarily have logical links to one another. Joining tables without logical links may produce undesired results; a thorough understanding of the data is needed to guarantee results.



# Legacy Financial Tables Description

The Legacy Financial Tables Description provides the following information for each table in the U-M Data Warehouse Legacy Financial Data Set:

- Physical Table Name:* Name for the table you can use in SQL queries.
- Logical Table Name:* Descriptive name of the table.
- Data Set Locations:* The names of the data sets in which the table resides.
- Table Description:* Description of the table.

The tables are ordered alphabetically by table physical name.

Physical Table Name	Logical Table Name	Data Set Locations	Table Description
AcAgreeType	Account Agreement Type	FIN	Description of the account agreement type code.
AcBalance	Account Balance	FIN	Dollar history at the account level by fiscal year. Eventually this table will contain dollar information for the current fiscal year and the prior five fiscal years. It currently contains fewer years, however, since complete prior year information is unavailable.
AcClassFY	Account Class Fiscal Year	FIN	Dollar history at the account/class level by fiscal year. This table contains dollar information for the current fiscal year and the prior five fiscal years.
AcClassMon	Account Class Month	FIN	Dollar history at the account/class level by month. This table contains dollar information for the current fiscal year and the prior five fiscal years.
AcCoordinator	Account Coordinator	FIN	Description of the account coordinator code and the phone number of the account coordinator.
Account	Account	FIN PER	Characteristics of account numbers, such as account title, project director, and associated organization code.
AcctToFund	Convert Account to Fund	CHRTFLD1	Converts legacy accounts or account ranges to funds.
AcEndowFunction	Account Endowment Function	FIN	Description of the account endowment function code.
AcEndowFunctionGrp	Account Endowment Function Group	FIN	Description of the account endowment function group code.

Physical Table Name	Logical Table Name	Data Set Locations	Table Description								
AcEndowShare	Account Endowment Share	FIN	<p>Endowment share information for an account by quarter for the year. The share values for a quarter are computed in the following quarter and are normally available in the operational system at the end of that following quarter. Based on this availability, endowment share information is generally available in this table as follows:</p> <p><i>For quarter ending:   Month available in this table:</i></p> <table> <tr> <td>March</td> <td>July</td> </tr> <tr> <td>June</td> <td>October</td> </tr> <tr> <td>September</td> <td>January</td> </tr> <tr> <td>December</td> <td>April</td> </tr> </table> <p>Eventually, this table will contain dollar information for the current year and the prior five fiscal years. It contains fewer years, however, since complete prior year information is unavailable.</p>	March	July	June	October	September	January	December	April
March	July										
June	October										
September	January										
December	April										
AcFunction	Account Function	FIN	Description of the account function code.								
AcFunctionGrp	Account Function Group	FIN	Description of the account function group code.								
AcGenLed	Account General Ledger	FIN	Description of the account general ledger code.								
AcGenLedGrp	Account General Ledger Group	FIN	Description of the account general ledger group code.								
AcICCost	Account Indirect Cost	FIN	Description of the account indirect cost code.								
AcInvestPool	Account Investment Pool	FIN	Description of the investment pool code.								
AcPrimaryFunding	Account Primary Funding	FIN	Description of the account primary funding code.								
AcSource	Account Source	FIN	Description of the account source code.								
AcSourceGrp	Account Source Group	FIN	Description of the account source group code.								
AcStatus	Account Status	FIN	Description of the account status code.								
AuxAcMonBud	Auxiliary Account Monthly Budget	FIN	For auxiliary accounts, the budgeted amount for an account for a month.								
AuxAcType	Auxiliary Account Type	FIN	Description of the auxiliary account type code.								
CalMonth	Calendar Month	FIN	Identifies and describes calendar months and associates them with a University fiscal year quarter and a University fiscal month.								
CalYrMonth	Calendar Year Month	FIN	Identifies calendar year and calendar months, and associates them with a University fiscal year.								

**Legacy Financial Tables Description**

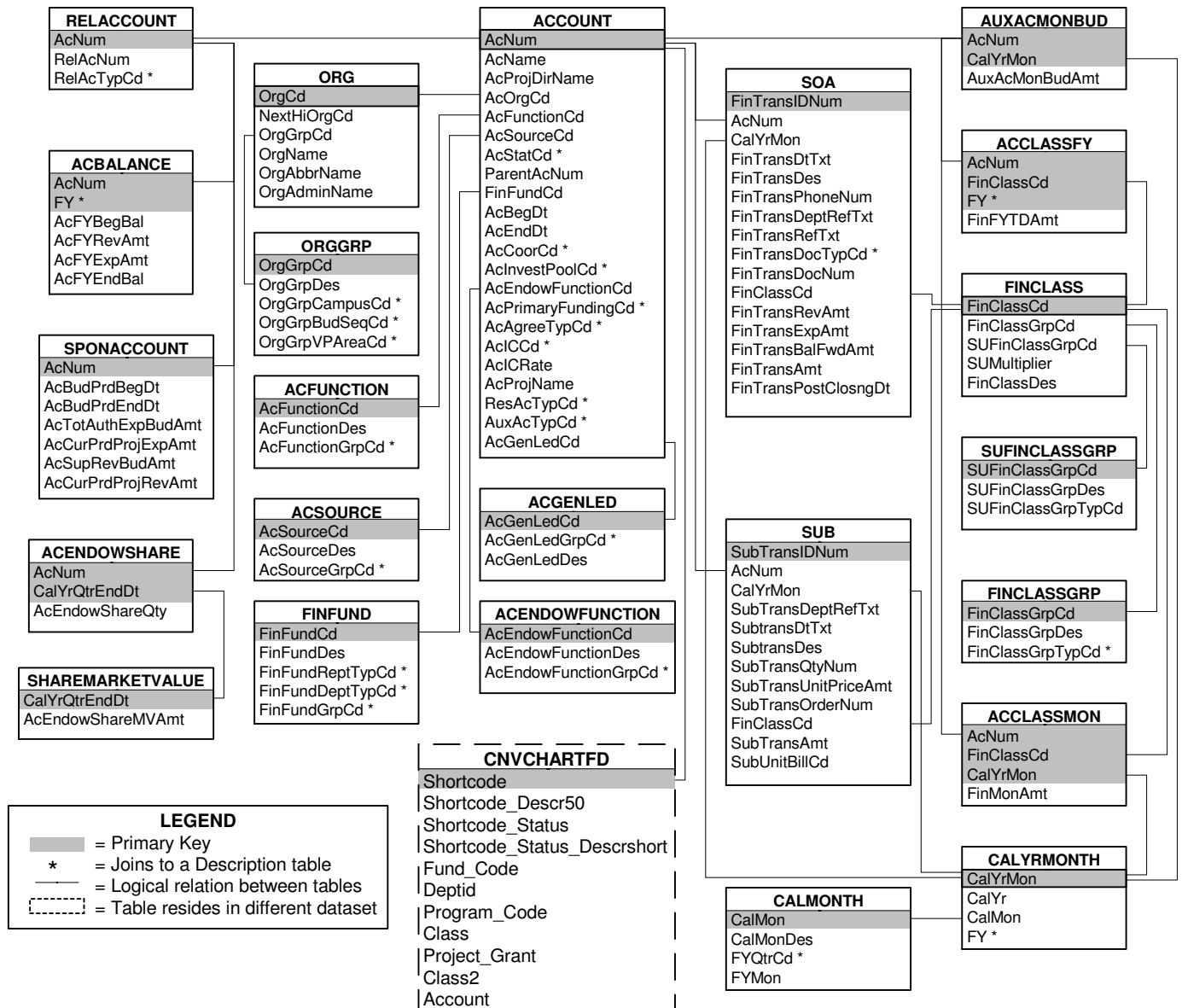
<b>Physical Table Name</b>	<b>Logical Table Name</b>	<b>Data Set Locations</b>	<b>Table Description</b>
CnvAccount	Convert FinClass To Account	CHRTFLD1	Converts legacy financial class codes to accounts.
CnvAcctOrg	Convert Account To Org	CHRTFLD1	Converts legacy accounts to orgs. This conversion was done for legacy accounts where the unit did not want to change the legacy org code but wanted a new value in the new General Ledger.
CnvBSAccts	Convert Balance Sheet Accounts To Chartfields	CHRTFLD1	Converts legacy balance sheet accounts to chartfields.
CnvChartFd	Convert Account To Chartfields	CHRTFLD1	Converts all legacy accounts to chartfields.
CnvClassCd	Convert Class Code To SubClass	CHRTFLD1	Converts legacy class codes used for indirect cost excluded activities to subclass codes. These codes will also convert to accounts on the CNVACCOUNT. These chartfields should then be used in combination.
CnvEndow	Convert Endowment To SubClass	CHRTFLD1	Converts legacy endowment accounts to subclass codes. These same endowment accounts will also convert to funds on the ACCTTOFUND table. These chartfields should then be used in combination.
CnvOrg	Convert Legacy Org To Org	CHRTFLD1	Converts legacy org codes to org codes.
CnvPgmProj	Convert Account To Program And Project/Grant	CHRTFLD1	Converts legacy accounts to programs and/or project/grants.
CnvSubClas	Convert FunctionTo SubClass	CHRTFLD1	Converts legacy function codes to subclass codes.
FinClass	Financial Class	FIN PER	Description of the financial class code.
FinClassGrp	Financial Class Group	FIN	Description of the financial class group code.
FinClassGrpType	Financial Class Group Type	FIN	Description of the financial class group type code.
FinFund	Financial Fund	FIN	Description of the financial fund code.
FinFundDeptType	Financial Fund Department Type	FIN	Description of the financial fund department type code.
FinFundGrp	Financial Fund Group	FIN	Description of the financial fund group code.
FinFundReptType	Financial Fund Report Type	FIN	Description of the financial fund report type code.
FinStatus	Financial Tables Status	FIN	Status of the monthly update for the financial tables.

Physical Table Name	Logical Table Name	Data Set Locations	Table Description
FinTransDocType	Financial Transaction Document Type	FIN	Description of the financial transaction document type code.
FisYear	Fiscal Year	FIN	The U-M fiscal year in two different formats (1979 and 1978–79).
FYQtr	Fiscal Year Quarter	FIN	Description of the University fiscal year quarters.
Org	Organization	FIN PER	Characteristics of organizations, such as organization name, administrator, and associated organization group code.
OrgGrp	Organization Group	FIN	Description of the organization group code.
OrgGrpCampus	Organization Group Campus	FIN	Description of the organization group campus code.
OrgGrpBudSeq	Organization Group Budget Sequence	FIN	Description of the organization group budget sequence code.
OrgGrpVPArea	Organization Group Vice President Area	FIN	Description of the organization group vice president area code.
RelAccount	Related Account	FIN	A subset of accounts that have other accounts related to them. One account can have many other accounts related to it.
RelAccountType	Related Account Type	FIN	Description of the related account code.
ResAcType	Research Account Type	FIN	Description of the research account type code.
ShareMarketValue	Share Market Value	FIN	Market value amount for an endowment share, by quarter for the year. The share values for a quarter are computed in the following quarter and are normally available in the operational system at the end of that following quarter. See the AcEndowShare Table definition for more information about when this information is generally available. Eventually, this table will contain dollar information for the current year and the prior five fiscal years. It contains fewer years, however, since complete prior year information is unavailable.
SoA	Statement of Account	FIN	Dollar history at the account financial detail level by month. This table contains information for the current fiscal year and the prior five fiscal years.
SponAccount	Sponsored Accounts	FIN	Characteristics of the subset of accounts which are sponsored.
SUB	Service Unit Billing	FIN	Dollar history at the service unit billing detail level by month. This table contains information for the current month and the prior fiscal year.
SUBUnitBillCds	Service Unit Billing Unit Billing Codes	FIN	Description of the SUB unit billing code.
SUFinClassGrp	Source Use Financial Class Group	FIN	Description of the Source Use financial class group code.
SUFinClassGrpType	Source Use Financial Class Group Type	FIN	Description of the Source Use financial class group type code.

# Legacy Financial Primary Tables Diagram

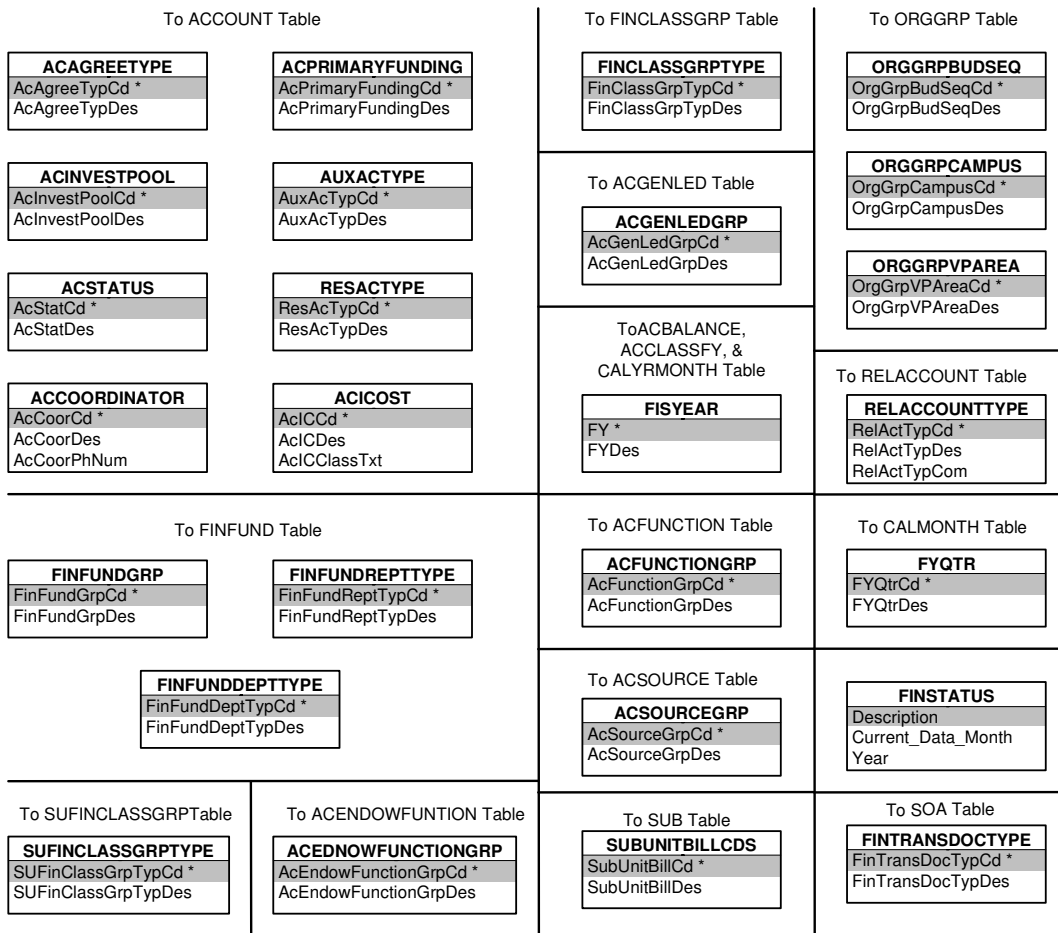
The Legacy Financial Primary Tables Diagram illustrates the *logical* relationships among the Legacy Financial Primary Tables. A logical link (connecting line) between two tables indicates that there is a direct data relationship between the two tables. Physically, any tables with a common element can be joined. However, two tables with common elements may not necessarily have logical links to one another. Joining tables without logical links may produce undesired results; a thorough understanding of the data is needed to guarantee results.

Elements on the Legacy Financial Primary Tables Diagram that you can use to join one or more description tables are indicated with an asterisk (\*). Refer to page 7 for the Legacy Financial Description Tables Diagram.

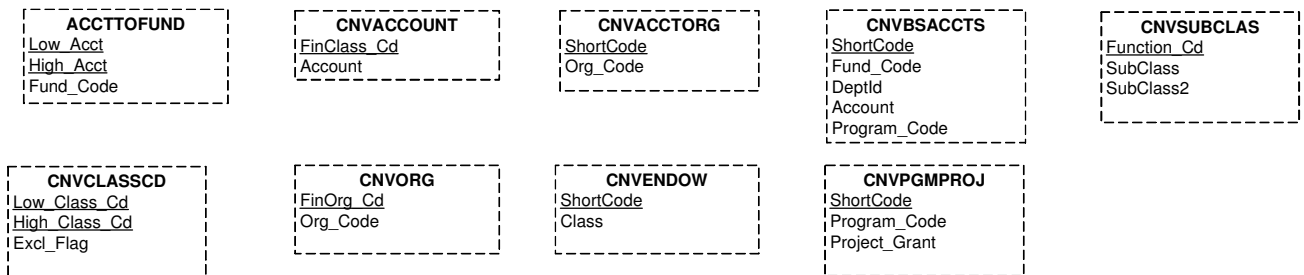


# Legacy Financial Description Tables Diagram 4/06

The Legacy Financial Description Tables Diagram illustrates the description tables associated with the Legacy Financial data set. You can use a description table alone, with other description tables, and with the primary Legacy Financial tables. To connect a description table to a primary table, join on the common element.



Chartfield Conversion Tables



**LEGEND**

= Primary Key  
 \* = Element joins to a Primary table

# Legacy Financial Data Element Dictionary

The Legacy Financial Data Element Dictionary contains all the elements found in the U-M Data Warehouse Legacy Financial Tables, ordered alphabetically by element name. Here is a description of the information that the dictionary provides for each element:

*Physical Element Name:* Name for the element you can use in SQL queries.

*Logical Element Name:* Descriptive name of the element.

*Format Type:* Type of value of the element (for example: character, number, or date).

*Note:* If the format type for an element is character or date, you must enclose the variable value in single quotes when entering queries.

*Format Length:* Total length of the element. For data elements in the format “number, number”, the first number represents the total length of the element. The second number represents the number of digits to the right of the decimal.

*Data Sets:* The names of the data sets that contain the element.

*Table Locations:* The names of the tables in which the element is located.

*Security Code:* The level of security imposed on the element. Values are:

P Public data: Data with no access restriction that may be released to the general public.

R Private/Confidential data: Data available to University employees who need to access these data to perform their official University duties. Unless otherwise noted, all institutional data is designated as Private/Confidential.

S Sensitive data: Data available only to University employees who have specific authorization for access. Never release sensitive data in a manner that enables identifying data element values with a specific person or persons.

*Element Definition:* Description of the element.

*Examples of Valid Values:* Either the specific codes that are valid for the element, or samples of the kind of values for the element.

Physical Element Name	Logical Element Name	Format Type	Format Length	Data Sets	Table Locations	Security Code	Element Definition	Examples of Valid Values
AcAgreeTypCd	Account Agreement Type Code	Character	2	FIN	Account AcAgreeType	R	A code indicating the nature of the relationship between the University and the sponsor on externally funded projects.	01=Grant; 02=Cost Reimbursable Contract; 03=Fixed Price Contract; 00=Default for No Agreement Type

Physical Element Name	Logical Element Name	Format Type	Format Length	Data Sets	Table Locations	Security Code	Element Definition	Examples of Valid Values
AcAgreeTypDes	Account Agreement Type Description	Character	50	FIN	AcAgreeType	R	A textual description of the code indicating the nature of the relationship between the University and the sponsor on externally funded projects.	01=GRANT; 02=COST REIMBURSABLE CONTRACT; 03=FIXED PRICE CONTRACT; 00=DEFAULT FOR NO AGREEMENT TYPE
AcBegDt	Account Begin Date	Date	9	FIN	Account	R	The first date on which commitments may occur to an account.	15-SEP-91
AcBudPrdBegDt	Account Budget Period Beginning Date	Date	9	FIN	SponAccount	R	The beginning date for the current budget period for a sponsored account as specified in the sponsor agreement. The sponsor agreement dictates whether the budget begin date changes with additional funding levels.	15-SEP-91
AcBudPrdEndDt	Account Budget Period Ending Date	Date	9	FIN	SponAccount	R	The ending date for the current budget period for a sponsored account as specified in the sponsor agreement. The sponsor agreement dictates whether the budget end date changes with additional funding levels.	15-SEP-91
AcCoorCd	Account Coordinator Code	Character	2	FIN	Account AcCoordinator	R	A code representing the person or group in Financial Operations or ISR with responsibility for coordinating the financial activities of an account.	11; 12; 13

## Legacy Financial Data Element Dictionary

Physical Element Name	Logical Element Name	Format Type	Format Length	Data Sets	Table Locations	Security Code	Element Definition	Examples of Valid Values
AcCoorDes	Account Coordinator Description	Character	30	FIN	AcCoordinator	R	A textual description of the code representing the Financial Operations or ISR person or group of persons responsible for coordinating the financial activities of an account.	LC-LAURA COTT; BH-BOB HARRISON; JH-JANE HENNER
AcCoorPhNum	Account Coordinator Phone Number	Character	8	FIN	AcCoordinator	R	The phone number of the Financial Operations or ISR person or group of persons responsible for coordinating the financial activities of an account.	747-1299; 747-1426; 747-1456
Account	Account Code	Character	6	CHRTFLD1	CnvAccount CnvBSAccts CnvChartFd	R	A code used to record and summarize financial transactions such as assets, liabilities, fund balances, revenues, expenses or statistics or budget accounts.	122100 = Accounts &; 615020 = Postage/ Ma; SHR = Shares
AcCurPrdProjExpAmt	Account Current Period Project Expense Amount	Number	11,2	FIN	SponAccount	R	The total expenditures on an account for a project for the current budget period. The current budget period could be one year, fifty years, or anything in between.	0.00; 1255.13; 10000.00
AcCurPrdProjRevAmt	Account Current Period Project Revenue Amount	Number	11,2	FIN	SponAccount	R	The total revenues on an account for a project for the current budget period. The current budget period could be one year, fifty years, or anything in between.	0.00; 43550.00; 110000.00

Physical Element Name	Logical Element Name	Format Type	Format Length	Data Sets	Table Locations	Security Code	Element Definition	Examples of Valid Values
AcEndDt	Account End Date	Date	9	FIN	Account	R	The date after which commitments may not be initiated or encumbered to an account.	15-SEP-91
AcEndowFunctionCd	Account Endowment Function Code	Character	2	FIN	Account AcEndowFunction	R	A code that designates the primary purpose related to a specified U-M endowment account or funds functioning as an endowment account. A "99" represents that an invalid code was entered in this field. A "00" is used for an account that is not an endowment account or funds functioning as an endowment account.	05=Instruction - Endowment; 15=Research - Endowment; 55=Instruction - FFAE
AcEndowFunctionDes	Account Endowment Function Description	Character	30	FIN	AcEndowFunction	R	A textual description of the code that designates the primary purpose related to a specified U-M endowment account or funds functioning as an endowment account. A null value in this field is possible and represents that the code is not applicable to this account.	05=INSTRUCTION - ENDOWMENT; 15=RESEARCH - ENDOWMENT; 55=INSTRUCTION - FFAE
AcEndowFunctionGrpCd	Account Endowment Function Group Code	Character	2	FIN	AcEndowFunction AcEndowFunctionGrp	R	A code used to group account endowment function codes. For example, AcEndowFunctionCd "05"="Instruction - Endowment" and "55"="Instruction - FFAE" are both assigned an AcEndowFunctionGrpCd of "01"="Instruction".	01=Instruction; 02=Research; 03=Public Services; 04=Academic Support

## Legacy Financial Data Element Dictionary

Physical Element Name	Logical Element Name	Format Type	Format Length	Data Sets	Table Locations	Security Code	Element Definition	Examples of Valid Values
AcEndowFunctionGrpDes	Account Endowment Function Group Description	Character	50	FIN	AcEndowFunctionGrp	R	A textual description of the code used to group account endowment function codes.	01=INSTRUCTION; 02=RESEARCH; 03=PUBLIC SERVICES; 04=ACADEMIC SUPPORT
AcEndowShareMVAmt	Account Endowment Share Market Value Amount	Number	9,8	FIN	ShareMarketValue	R	The dollar amount representing the market value of a single share in the Endowment Fund at the end of the most recent quarter.	2.97661613; 3.78266086; 4.28818264
AcEndowShareQty	Account Endowment Share Quantity	Number	12	FIN	AcEndowShare	R	The quantity of shares an account owns in the University Endowment Pool.	000000000000; 000000485440; 000000005000
AcFunctionCd	Account Function Code	Character	4	FIN	Account AcFunction	R	A code that designates the primary activity related to a specified U-M account.	0110 = Instruction; 0220 = Organized Research
AcFunctionDes	Account Function Description	Character	27	FIN	AcFunction	R	A textual description of a code that designates the primary activity related to a specified UM account.	INSTRUCTION; ORGANIZED RESEARCH
AcFunctionGrpCd	Account Function Group Code	Character	2	FIN	AcFunction AcFunctionGrp	R	A code used to group function codes.	01=Instruction; 03=Public Service; 10=Staff Benefits
AcFunctionGrpDes	Account Function Group Description	Character	27	FIN	AcFunctionGrp	R	A textual description of the code used to group function codes.	01=INSTRUCTION; 03=PUBLIC SERVICE; 10=STAFF BENEFITS
AcFYBegBal	Account Fiscal Year Beginning Balance	Number	13,2	FIN	AcBalance	R	The dollar balance in an account at the beginning of a fiscal year (July 1).	-598698.31; 0.00; 250000.00

Physical Element Name	Logical Element Name	Format Type	Format Length	Data Sets	Table Locations	Security Code	Element Definition	Examples of Valid Values
AcFYEndBal	Account Fiscal Year Ending Balance	Number	13,2	FIN	AcBalance	R	The dollar balance in an account at the end of a completed fiscal year (June 30), which is AcFYBegBal + AcFYRevAmt – AcFYExpAmt. During the current fiscal year, this amount reflects the Financial Fiscal Year To Date Amount (FinFYTDAmt).	-896853.44; 0.00; 107810.60
AcFYExpAmt	Account Fiscal Year Expense Amount	Number	13,2	FIN	AcBalance	R	Total expense dollars charged to an account at the end of a completed fiscal year. This is the sum of FinFYTDAmt for all expense class codes [1000–4999]. During the current fiscal year, this amount reflects the expense dollars charged for the fiscal year to date.	439686.59; 0.00; 500000.00
AcFYRevAmt	Account Fiscal Year Revenue Amount	Number	13,2	FIN	AcBalance	R	Total revenue dollars charged to an account at the end of a completed fiscal year. This is the sum of FinFYTDAmt for all revenue class codes [0000–0999,5000–9999]. During the current fiscal year this amount reflects the revenue dollars charged for the fiscal year to date.	500000.00; 0.00; -298155.13
AcGenLedCd	Account General Ledger Code	Character	4	FIN	Account AcGenLed	R	A code used primarily to identify a type of general ledger account. The Business School uses this code for grouping expendable and designated fund accounts.	4201=Cash; 4301=Cash Expendable Trustees; 4401=Cash

**Legacy Financial Data Element Dictionary**

Physical Element Name	Logical Element Name	Format Type	Format Length	Data Sets	Table Locations	Security Code	Element Definition	Examples of Valid Values
AcGenLedDes	Account General Ledger Description	Character	32	FIN	AcGenLed	R	A textual description of the code used primarily to identify a type of general ledger account. The Business School uses this code for grouping expendable and designated fund accounts.	4201=CASH; 4301=CASH EXPENDABLE TRUSTEES; 4401=CASH
AcGenLedGrpCd	Account General Ledger Group Code	Character	2	FIN	AcGenLed AcGenLedGrp	R	A code used to group types of general ledger accounts.	42=Student Loans Fund; 43=Endowment Consolidation; 44=Student Residence Fund
AcGenLedGrpDes	Account General Ledger Group Description	Character	32	FIN	AcGenLedGrp	R	A textual description of the code used to group types of general ledger accounts.	42=STUDENT LOANS FUND; 43=ENDOWMENT CONSOLIDATION; 44=STUDENT RESIDENCE FUND
AcICCd	Account Indirect Cost Code	Character	2	FIN	Account AcICost	R	A code identifying a group of expense classifications which are included in the calculation of indirect cost for an account. A null value in this field is possible and represents that a code is not applicable to this account.	00=No indirect cost calculation (default if value left blank); 19 = All direct costs; 23 = Salaries and wages only
AcICClassTxt	Account Indirect Cost Class Text	Character	249	FIN	AcICost	R	A group of expense classifications which are included in the calculation of indirect cost for an account. This is a text field for description purposes only.	1000-3999; 1000-1499, 1600-1699, 1910

Physical Element Name	Logical Element Name	Format Type	Format Length	Data Sets	Table Locations	Security Code	Element Definition	Examples of Valid Values
AcICDes	Account Indirect Cost Description	Character	125	FIN	AcICost	R	A textual description of the code identifying a group of expense classifications which are included in the calculation of indirect cost for an account.	NO INDIRECT COST CALCULATION (default if value left blank); ALL DIRECT COSTS; SALARIES AND WAGES ONLY
AcICRate	Account Indirect Cost Rate	Number	5,4	FIN	Account	R	The primary percentage rate used to charge indirect cost to an account. An indirect cost rate of 58% would be listed as 0.5800 in this field. A null value in this field is possible and represents that a rate is not applicable to this account.	0.0000; .3240; .5000
AcInvestPoolCd	Account Investment Pool Code	Character	1	FIN	Account AcInvestPool	R	A one-digit code indicating whether or not an account participates in the University Investment Pool.	0; 1; 9
AcInvestPoolDes	Account Investment Pool Description	Character	50	FIN	AcInvestPool	R	A textual description of the code indicating whether or not an account participates in the University Investment Pool.	0=ACCOUNT DOES NOT PARTICIPATE IN UIP; 1=ACCOUNT DOES PARTICIPATE IN UIP; 9=DEFAULT FOR BAD DATA
AcName	Account Name	Character	50	FIN	Account	R	The title of a U-M account number assigned to accumulate financial activity for a particular purpose.	UNKNOWN; 0900000M1756; BUSINESS ADMINISTRATION LOAN FUND

**Legacy Financial Data Element Dictionary**

Physical Element Name	Logical Element Name	Format Type	Format Length	Data Sets	Table Locations	Security Code	Element Definition	Examples of Valid Values
AcNum	Account Number	Character	6	FIN PER	AcBalance AcClassFY AcClassMon Account AcEndowShare AuxAcMonBud RelAccount SoA SponAccount SUB Fund	R	The number assigned to accumulate financial activity for a particular purpose.	011656; 680070; 939876
AcOrgCd	Account Organization Code	Character	4	FIN	Account	R	The organization code to which an account belongs. For the name of the organization, see OrgName.	1000=Office of the President; 1865=Romance Languages; 1520=Museum of Art
AcPrimaryFundingCd	Account Primary Funding Code	Character	2	FIN	Account AcPrimaryFunding	R	A code primarily used in the Operating funds to break down government sponsored programs to the Federal, State, and Local level. It is also used to indicate on the organization report if an account is coded to receive Endowment or UIP income. In the Plant Fund, this code is used to identify the source of funding for a project. In any fund, this code is not directly related to the AcSourceGrpCd.	00=Federal; 01=Endowment; 02=UIP

Physical Element Name	Logical Element Name	Format Type	Format Length	Data Sets	Table Locations	Security Code	Element Definition	Examples of Valid Values
AcPrimaryFundingDes	Account Primary Funding Description	Character	50	FIN	AcPrimaryFunding	R	A textual description of the code primarily used in the Operating funds to break down government sponsored programs to the Federal, State, and Local level. It is also used to indicate on the organization report if an account is coded to receive Endowment or UIP income. In the Plant Fund, this code is used to identify the source of funding for a project. In any fund, this code is not directly related to the AcSourceGrpCd.	00=FEDERAL; 01=ENDOWMENT; 02=UIP
AcProjDirName	Account Project Director	Character	30	FIN	Account	R	The name of the person who has fiscal responsibility for a U-M account in the format Last, First Middle Initial.	SMITH, JANE A
AcProjName	Account Project Name	Character	76	FIN	Account	R	An optional title for some accounts, typically sponsored research accounts. A null value in this field is possible and represents that a title is not applicable to this account.	CANCER RESEARCH TRAINING IN NUCLEAR MEDICINE; STUDIES OF ELEMENTARY PARTICLES; MASS SPECTROMETER FOR GALILEO PROBE
AcSourceCd	Account Source Code	Character	5	FIN	Account AcSource	R	A code identifying the sponsor or donor of funds of the account. The codes are listed in alphabetical order of the sponsor.	02490=American Cancer Society; 12870=Campbell, William J., Memorial Scholarship; 03130=American Marketing Association

## Legacy Financial Data Element Dictionary

Physical Element Name	Logical Element Name	Format Type	Format Length	Data Sets	Table Locations	Security Code	Element Definition	Examples of Valid Values
AcSourceDes	Account Source Description	Character	65	FIN	AcSource	R	A textual description of the code identifying the sponsor, donor or other source of funds of an account.	AMERICAN CANCER SOCIETY; CAMPBELL, WILLIAM J., MEMORIAL SCHOLARSHIP; AMERICAN MARKETING ASSOCIATION
AcSourceGrpCd	Account Source Group Code	Character	2	FIN	AcSource AcSourceGrp	R	A code used to group account source codes by major funding source.	01=US Government
AcSourceGrpDes	Account Source Group Description	Character	50	FIN	AcSourceGrp	R	A textual description of a code used to group account source codes by major funding source.	US GOVERNMENT
AcStatCd	Account Status Code	Character	1	FIN	Account AcStatus	R	A code specifying the current status of a U-M account.	O=Open; C=Closed; R=Re-opened; T=Terminated
AcStatDes	Account Status Description	Character	20	FIN	AcStatus	R	A textual description of a code specifying the current status of a U-M account.	OPEN; CLOSED; RE-OPENED; TERMINATED
AcSupRevBudAmt	Account Supplemental Revenue Budget Amount	Number	11,2	FIN	SponAccount	R	The budget on an account for supplemental revenue for the current budget, which is in addition to sponsor funding, such as cost sharing.	7500.00; 500000.00; 43550.00
AcTotAuthExpBudAmt	Account Total Authorized Expense Budget Amount	Number	11,2	FIN	SponAccount	R	The total authorized amount for expenditures on an account for the current budget. This amount would cover funds from the sponsor and other sources, such as cost sharing.	7500.00; 500000.00; 43550.00

Physical Element Name	Logical Element Name	Format Type	Format Length	Data Sets	Table Locations	Security Code	Element Definition	Examples of Valid Values
AuxAcMonBudAmt	Auxiliary Account Monthly Budget Amount	Number	11,2	FIN	AuxAcMonBud	R	The monthly dollar amount budgeted for an individual auxiliary account based on the budget provided by the auxiliary unit.	75; 3800; 40
AuxAcTypCd	Auxiliary Account Type Code	Character	2	FIN	Account AuxAcType	R	A code used to indicate the type of auxiliary account. A null value in this field is valid and indicates that the code is not applicable to that account.	01=Asset; 05=Revenue, Operating; 06=Expense, Debt Repayment; 07=Revenue, Non-Operating
AuxAcTypDes	Auxiliary Account Type Description	Character	50	FIN	AuxAcType	R	A textual description of the code used to indicate the type of auxiliary account. A null value in this field is valid and indicates that the code is not applicable to that account.	01=ASSET; 05=REVENUE, OPERATING; 06=EXPENSE, DEBT REPAYMENT; 07=REVENUE, NON-OPERATING
CalMon	Calendar Month	Character	2	FIN	CalMonth CalYrMonth	R	A two digit code that identifies the calendar month.	01=January; 04=April; 12=December
CalMonDes	Calendar Month Description	Character	20	FIN	CalMonth	R	The name of the calendar month.	JANUARY; APRIL; DECEMBER
CalYr	Calendar Year	Character	4	FIN	CalYrMonth	R	Calendar year in the format YYYY.	1990; 1987; 1992
CalYrMon	Calendar Year Month	Character	6	FIN	AcClassMon AuxAcMonBud CalYrMonth SoA SUB	R	A code that identifies calendar year and calendar month in the format YYYYMM.	199007; 198712; 199203

**Legacy Financial Data Element Dictionary**

Physical Element Name	Logical Element Name	Format Type	Format Length	Data Sets	Table Locations	Security Code	Element Definition	Examples of Valid Values
CalYrQtrEndDt	Calendar Year Quarter Ending Date	Date	9	FIN	AcEndowShare ShareMarketValue	R	The date on which a quarter for a calendar year ends.	
Class	Class Code	Character	5	CHRTFLD1	CnvChartFd CnvEndow	R	A code used to group related activities directed towards the accomplishment of a set of common identifiable objectives or purposes.	11000 = General Academic Instruction; 21000= Departmental Research; 72000 = Utilities
Class2	Class2 Code	Character	5	CHRTFLD1	CnvChartFd	R	A code used to group related activities directed towards the accomplishment of a set of common identifiable objectives or purposes. This “second” class field is used for ICR excluded classes.	1100X = Gen Acad Instr-ICRX;
Deptid	Department Identification Code	Character	10	CHRTFLD1	CnvBSAccts CnvChartFd	R	A code that identifies each academic or administrative unit that has programmatic, operational and fiscal (including budgetary) responsibility.	184500 = Physics Department; 170000 = College of Lit, Science & Arts
Excl_Flag	Cost Exclude Flag	Character	1	CHRTFLD1	CnvClassCd	R	A code which identifies whether a range of legacy class codes is excluded from indirect cost.	Y; N
FinClassCd	Financial Class Code	Character	4	FIN	AcClassFY AcClassMon CnvAccount FinClass SoA SUB	R	A code that classifies dollars into various categories of revenue and expense. Expense class codes are numbered 1000–4999. Revenue class codes are numbered 0000–0999 and 5000–9999.	1201=Professional and Administrative; 2050=Hosp Depr—Building; 6050=Gift Receipts

Physical Element Name	Logical Element Name	Format Type	Format Length	Data Sets	Table Locations	Security Code	Element Definition	Examples of Valid Values
FinClassDes	Financial Class Description	Character	32	FIN	FinClass	R	A textual description of the code that classifies dollars into various categories of revenue and expense.	PROFESSIONAL AND ADMINISTRATIVE; HOSP DEPR— BUILDING; GIFT RECEIPTS
FinClassGrpCd	Financial Class Group Code	Character	3	FIN	FinClass FinClassGrp	R	A code used to group class codes that serve a similar purpose. For example, Class group code 005 (instructional staff salaries) is assigned to these class codes: 1105 Professor, 1112, Associate Professor, 1119 Assistant Professor, and so on.	005=Instructional Salaries; 060=Travel; 124=Inventory Rebuilding
FinClassGrpDes	Financial Class Group Description	Character	32	FIN	FinClassGrp	R	A textual description of a code used to group class codes that serve a similar purpose.	INSTRUCTIONAL SALARIES; TRAVEL; INVENTORY REBUILDING
FinClassGrpTypCd	Financial Class Group Type Code	Character	1	FIN	FinClassGrp FinClassGrpType	R	A code used to distinguish financial class groups between revenues, expenses, and their associated transfers.	1=Revenue; 2=Revenue Transfer 3=Expense; 4=Expense Transfer
FinClassGrpTypDes	Financial Class Group Type Description	Character	20	FIN	FinClassGrpType	R	A textual description of a code used to distinguish financial class groups between revenues, expenses, and their associated transfers.	REVENUE; REVENUE TRANSFER; EXPENSE; EXPENSE TRANSFER
FinFundCd	Financial Fund Code	Character	3	FIN	Account FinFund	R	A code used to identify a range of account numbers determined by the source of funds and intended use of the funds.	050=General Fund (AA); 330=Expendable Restricted Fund; 450=Student Loan

## Legacy Financial Data Element Dictionary

Physical Element Name	Logical Element Name	Format Type	Format Length	Data Sets	Table Locations	Security Code	Element Definition	Examples of Valid Values
FinFundDeptTypCd	Financial Fund Department Type Code	Character	1	FIN	FinFund FinFundDeptType	R	A code used to identify the type of FinFundCd being used, either operating or non-operating. This coding is consistent with how each department's monthly organization report classifies funds. The major difference between this code and the FinFundReptTypCd is that the Departmental Equipment Fund is viewed as operating in the FinFundDeptTypCd (because departments can spend out of those funds) and is viewed as non-operating in the FinFundReptTypCd.	O=Operating; N=Non-operating
FinFundDeptTypDes	Financial Fund Department Type Description	Character	15	FIN	FinFundDeptType	R	A textual description of the code used to identify the type of FinFundCd being used, either operating or non-operating.	O=OPERATING; N=NON-OPERATING
FinFundDes	Financial Fund Description	Character	32	FIN	FinFund	R	A textual description of a code identifying a range of account numbers determined by the source of funds and intended use of the funds.	GENERAL FUND; EXPENDABLE RESTRICTED FUND; STUDENT LOAN

Physical Element Name	Logical Element Name	Format Type	Format Length	Data Sets	Table Locations	Security Code	Element Definition	Examples of Valid Values
FinFundGrpCd	Financial Fund Group Code	Character	1	FIN	FinFund FinFundGrp	R	A code used to group FinFund codes for consolidation in the annual Financial Report. For example, Federal Fund, ISR, and Expendable Restricted are reported as (Consolidated) Expendable Restricted Fund and grouped under FinFundGrpCd=E.	P=Plant; S=Student Loans; Y=Agency; U=Unassigned
FinFundGrpDes	Financial Fund Group Description	Character	50	FIN	FinFundGrp	R	A textual description of the code used to group FinFund codes for consolidation in the annual Financial Report.	P=PLANT; S=STUDENT LOANS; Y=AGENCY; U=UNASSIGNED
FinFundReptTypCd	Financial Fund Report Type Code	Character	1	FIN	FinFund FinFundReptType	R	A code used to group funds into the categories that are used in the preparation of the annual University Financial Report. The major difference between this code and the FinFundDeptTypCd is that the Departmental Equipment Fund is viewed as operating in the FinFundDeptTypCd (because departments can spend out of those funds) and is viewed as non-operating in the FinFundReptTypCd.	O=Operating; N=Non-operating
FinFundReptTypDes	Financial Fund Report Type Description	Character	15	FIN	FinFundReptType	R	A textual description of the code used to group funds into the categories that are used in the preparation of the annual University Financial Report.	O=OPERATING; N=NON-OPERATING

**Legacy Financial Data Element Dictionary**

Physical Element Name	Logical Element Name	Format Type	Format Length	Data Sets	Table Locations	Security Code	Element Definition	Examples of Valid Values
FinFYTDamt	Financial Fiscal Year-To-Date Amount	Number	13,2	FIN	AcClassFY	R	Total fiscal year summary dollars for each class code for an account number. Adjustments to an account made after the fiscal year end are not available. During the current fiscal year, this amount reflects total dollar amounts for completed months.	0.00; 1709243.84; -704150.19
FinMonAmt	Financial Month Amount	Number	11,2	FIN	AcClassMon	R	Actual total dollar amount accumulated for a particular month in a class code for an account.	38500.00; -126132.34; 0.00
FinOrg_Cd	Legacy Organization Code	Character	4	CHRTFLD1	CnvOrg	R	A code that identifies each academic or administrative unit within the University.	1000 = Office of the President; 1520 = Museum of Art; 1865 = Romance Languages

Physical Element Name	Logical Element Name	Format Type	Format Length	Data Sets	Table Locations	Security Code	Element Definition	Examples of Valid Values
FinTransAmt	Financial Transaction Amount	Number	13,2	FIN	SoA	R	The dollar amount associated with a financial transaction. Regardless of whether the transaction represents a revenue or expenditure, the amount is <i>*always*</i> stored in this data element. Revenues would typically be positive and expenses would typically be negative. The purpose of this more generic amount field is to provide financial table users with greater flexibility and control about how they view and analyze financial transactions (other than the revenue/expense classification used for central reporting purposes).	1,80191; 9.70; -3.41
FinTransBalFwdAmt	Financial Transaction Balance Forward Amount	Number	13,2	FIN	SoA	R	The amount of a balance forward accounting adjusting entry. If the amount is null, a balance forward amount is not applicable for this transaction.	000; 89,231.31; -523.12
FinTransDeptRefTxt	Financial Transaction Department Reference Text	Character	8	FIN	SoA	R	An identifier used by the department originating the transaction to identify the transaction. If this field is null, an identifier has not been supplied.	XR358; TEL 219; IS069407; JUNE24

## Legacy Financial Data Element Dictionary

Physical Element Name	Logical Element Name	Format Type	Format Length	Data Sets	Table Locations	Security Code	Element Definition	Examples of Valid Values
FinTransDes	Financial Transaction Description	Character	32	FIN	SoA	S	A description which varies by Financial Transaction Document Type Code (FinTransDocTypCd) and is free-format. This element may contain sensitive data for certain document types, specifically, full or partial social security or student ID numbers. This sensitive data is not in a fixed position within the 32-character field and varies in format when it does appear (e.g., 7-, 8-, or 9-character SSNs with or without intervening hyphens or blanks). If this field is null, a description has not been supplied.	STARNA CELLS INC EG728; SERVICE UNIT BILLING; JONES MIKE R NEW LONDON NH
FinTransDocNum	Financial Transaction Document Number	Character	6	FIN	SoA	R	A six-digit number assigned in conjunction with the Financial Transaction Document Type Code (FinTransDocTypCd) to reference supporting documents pertaining to the specific financial transaction.	000000; 453682; 012105
FinTransDocTypCd	Financial Transaction Document Type Code	Character	2	FIN	FinTransDocType SoA	R	A code used to identify the type of document being processed. As of September 1993, post-closing transactions are identified as "PC." In prior years, post-closing transactions cannot be distinguished from other journal entries ("JE").	CP=CASH PAYMENT; JE=JOURNAL ENTRY; PR=PAYROLL REGISTER

Physical Element Name	Logical Element Name	Format Type	Format Length	Data Sets	Table Locations	Security Code	Element Definition	Examples of Valid Values
FinTransDocTypDes	Financial Transaction Document Type Description	Character	50	FIN	FinTransDocType	R	A textual description of the code used to identify the type of document being processed.	CP=CASH PAYMENT; JE=JOURNAL ENTRY; PR=PAYROLL REGISTER
FinTransDtTxt	Financial Transaction Date Text	Character	6	FIN	SoA	R	The date of the transaction. For post closing transactions, this date is June 30 of the prior (applicable) fiscal year. In some cases, this field contains a non-calendar date (e.g., April 31, 1994, April 32, 1994, and April 00, 1994). Non-calendar dates represent corrections made before the "Statement of Account" report was processed. For example, dates of 31 and 32 indicate payroll corrections processed before statements were processed.	073194; 031293; 013294
FinTransExpAmt	Financial Transaction Expense Amount	Number	13,2	FIN	SoA	R	An amount representing the expense associated with a transaction. If the amount is null, an expense amount is not applicable for this transaction.	000; 1,988.34; -334.93
FinTransIDNum	Financial Transaction Identification Number	Character	18	FIN	SoA	R	A concatenated number created from the AcNum, CalYrMon, and Statement of Account sequence number (a number automatically assigned to identify a detail line in the paper SoA report), used to uniquely identify a financial transaction.	022102199407000004; 022111199407000016; 022689199407000013

## Legacy Financial Data Element Dictionary

Physical Element Name	Logical Element Name	Format Type	Format Length	Data Sets	Table Locations	Security Code	Element Definition	Examples of Valid Values
FinTransPhoneNum	Financial Transaction Phone Number	Character	7	FIN	SoA	R	A phone number to call for more information regarding the transaction. This is usually a phone number in the department originating the transaction. If this field is null, a phone number has not been supplied.	40404; 60302; 41440
FinTransPostClosngDt	Financial Transaction Post Closing Date	Date	9	FIN	SoA	R	The date on which a post-closing transaction was created. Dates are carried for post-closing transactions since September 1993. This field is null for all non-post-closing financial transactions. It is also null for post-closing transactions prior to September 1993.	null; 09171994; 10051995
FinTransRefTxt	Financial Transaction Reference Text	Character	10	FIN	SoA	R	The contents of this field varies by Financial Transaction Document Type Code (FinTransDocTypCd). For example, it might include a bill of lading number, or a purchase order number, etc., but most often it is null.	821; 202329; V64935
FinTransRevAmt	Financial Transaction Revenue Amount	Number	13,2	FIN	SoA	R	An amount representing the revenue associated with a transaction. If the amount is null, a revenue amount is not applicable for this transaction.	000; 12,889.34; -4,521.55

Physical Element Name	Logical Element Name	Format Type	Format Length	Data Sets	Table Locations	Security Code	Element Definition	Examples of Valid Values
Function_Cd	Legacy Function Code	Character	4	CHRTFLD1	CnvSubClass	R	A code that designates the primary activity related to a specified U-M account.	0110 = Instruction; 0220 = Organized Research
Fund_Code	Fund Code	Character	5	CHRTFLD1	AcctToFund CnvBSAccts CnvChartFd	R	A code used to identify the source of funds and intended use of the funds.	10000 = General; 54020 = Auxiliary-Institutional Fund
FY	Fiscal Year	Character	4	FIN	AcBalance AcClassFY CalYrMon FisYear	R	The U-M fiscal year in the format YYYY. The U-M fiscal year runs from July through June. For example, July 1, 1992–June 30, 1993 is 1993.	1987; 1990; 1992
FYDes	Fiscal Year Description	Character	7	FIN	FisYear	R	The U-M fiscal year in the format YYYY–YY. The U-M fiscal year runs from July through June. For example, July 1, 1992–June 30, 1993 is 1992–93.	1986–87; 1989–90; 1991–92
FYMon	Fiscal Year Month	Character	2	FIN	CalMonth	R	A two-digit code that identifies the University fiscal month. The U-M fiscal year runs from July through June.	01=July; 07=January; 12=June
FYQtrCd	Fiscal Year Quarter Code	Character	2	FIN	CalMonth FYQtr	R	A code used to identify the University fiscal year quarter.	Q1=Jul-Sep; Q2=Oct-Dec; Q3=Jan-Mar; Q4=Apr-Jun
FYQtrDes	Fiscal Year Quarter Description	Character	7	FIN	FYQtr	R	A description of the University fiscal year quarter.	JUL–SEP; OCT–DEC; JAN–MAR; APR–JUN

## Legacy Financial Data Element Dictionary

Physical Element Name	Logical Element Name	Format Type	Format Length	Data Sets	Table Locations	Security Code	Element Definition	Examples of Valid Values
High_Acct	Legacy High Account Number	Character	6	CHRTFLD1	AcctToFund	R	The highest legacy account number in a range that maps to a fund.	000001; 100000
High_Class_Cd	Legacy High Class Code	Character	4	CHRTFLD1	CnvClassCd	R	The highest legacy class code in a range that indicates whether the range should be excluded from indirect cost.	0000; 1106
Low_Acct	Legacy Low Account Number	Character	6	CHRTFLD1	AcctToFund	R	The lowest legacy account number in a range that maps to a fund.	099999; 197999
Low_Class_Cd	Legacy Low Class Code	Character	4	CHRTFLD1	CnvClassCd	R	The lowest legacy class code in a range that indicates whether the range should be excluded from indirect cost.	1105; 1112
NextHiOrgCd	Next Higher Organization Code	Character	4	FIN	Org	R	The organization code of the next higher level to which an organization code reports. See OrgName for description of the code.	1000; 0210; 1400
Org_Code	Org Code	Character	10	CHRTFLD1	CnvAcctOrg CnvOrg	R	A code that identifies each academic or administrative unit that has programmatic, operational and fiscal (including budgetary) responsibility.	184500=Physics Department
OrgAbbrName	Organization Abbreviated Name	Character	20	FIN	Org	R	Abbreviated version of the full organization name.	OFF OF THE PRESIDENT; MICROCOMPUTER ED CTR; OFF OF VP FOR RES

Physical Element Name	Logical Element Name	Format Type	Format Length	Data Sets	Table Locations	Security Code	Element Definition	Examples of Valid Values
OrgAdminName	Organization Administrator Name	Character	30	FIN	Org	R	The name of the person who is assigned responsibility for an organization code in the format Last, First Middle Initial.	SMITH, JANE A
OrgCd	Organization Code	Character	4	FIN	Org	R	A code that identifies each academic or administrative unit within the University.	1000=Office of the President; 1865=Romance Languages; 1520=Museum of Art
OrgGrpBudSeqCd	Organization Group Budget Sequence Code	Character	2	FIN	OrgGrp OrgGrpBudSeq	R	A code used to group and sequence organizations by their reporting relationships for the General Fund Budget. This grouping can differ from the normal organizational hierarchy. Values in this field contain a space, which must be included when qualifying a query; for example, "H "=Dearborn; "H"=Education; "9 "=Staff Benefits Pool.	H =Dearborn; H=Education; 9 =Staff Benefits Pool
OrgGrpBudSeqDes	Organization Group Budget Sequence Description	Character	1	FIN	OrgGrpBudSeq	R	A textual description of the code used to group and sequence organizations by their reporting relationships for the General Fund Budget. This grouping can differ from the normal organizational hierarchy.	H =DEARBORN; H=EDUCATION; 9 =STAFF BENEFITS POOL
OrgGrpCampusCd	Organization Group Campus Code	Character	1	FIN	OrgGrp OrgGrpCampus	R	A code used to identify organization groups by campus and by University Hospitals.	A=Ann Arbor; D=Dearborn; F=Flint; H=Hospital

## Legacy Financial Data Element Dictionary

Physical Element Name	Logical Element Name	Format Type	Format Length	Data Sets	Table Locations	Security Code	Element Definition	Examples of Valid Values
OrgGrpCampusDes	Organization Group Campus Description	Character	20	FIN	OrgGrpCampus	R	A textual description of the code used to identify organization groups by campus and by University Hospitals.	A=ANN ARBOR; D=DEARBORN; F=FLINT; H=HOSPITAL
OrgGrpCd	Organization Group Code	Character	2	FIN	Org OrgGrp	R	A code used to group OrgCd (Organization Codes) for reporting purposes. Generally used to group Schools, Colleges, administrative areas, and vice presidential areas.	I=Office of VP Research; &=Institute for Social Research; E=School of Education; 28=School of Art
OrgGrpDes	Organization Group Description	Character	60	FIN	OrgGrp	R	A textual description of the code used to group OrgCd (Organization Codes) for reporting purposes. The code is generally used to group Schools, Colleges, administrative areas, and vice presidential areas.	OFFICE OF VP RESEARCH; INSTITUTE FOR SOCIAL RESEARCH; SCHOOL OF EDUCATION; SCHOOL OF ART
OrgGrpVPAreaCd	Organization Group Vice President Area Code	Character	2	FIN	OrgGrp OrgGrpVPArea	R	A code used to group organization groups by President, Vice President, or Chancellor, based on direct reporting lines.	01; 03; 06
OrgGrpVPAreaDes	Organization Group Vice President Area Description	Character	30	FIN	OrgGrpVPArea	R	A textual description of the code used to group organization groups by President, Vice President, or Chancellor, based on direct reporting lines.	01=OFFICE OF THE PRESIDENT; 03=FLINT; 06=HOSPITAL
OrgName	Organization Name	Character	32	FIN	Org	R	The full organization name.	OFFICE OF THE PRESIDENT; ROMANCE LANGUAGES; MUSEUM OF ART

Physical Element Name	Logical Element Name	Format Type	Format Length	Data Sets	Table Locations	Security Code	Element Definition	Examples of Valid Values
ParentAcNum	Parent Account Number	Character	6	FIN	Account	R	An account number from which funds are distributed to other accounts. Each account has a parent account, which can be itself.	000030; 139674; 793323
Program_Code	Program Code	Character	5	CHRTFLD1	CnvBSAccts CnvChartFd CnvPgmProj	R	A code identifying a group of related activities, cost centers, revenue centers, responsibility centers and academic programs. These activities may occur within a single department or across multiple departments.	ADMIS = Admissions; RERET = Recruitment & Retention
Project_Grant	Project/Grant Code	Character	15	CHRTFLD1	CnvChartFd CnvPgmProj	R	A code used to accumulate financial information on a set of activities over a limited time span. Used for contracts and grants, construction projects and unit-defined projects.	C026993; F000101
RelAcNum	Related Account Number	Character	6	FIN	RelAccount	R	An account number which has a relationship with itself or another account number.	000050; 022081; 600201
RelAcTypCd	Related Account Type Code	Character	2	FIN	RelAccount RelAccountType	R	A code which identifies a type of relationship between two accounts.	04=Student Loan Interest Income; 05= Subsidiary Account; 06=Asset Acquisition

**Legacy Financial Data Element Dictionary**

Physical Element Name	Logical Element Name	Format Type	Format Length	Data Sets	Table Locations	Security Code	Element Definition	Examples of Valid Values
RelAcTypCom	Related Account Type Comment	Character	125	FIN	RelAccountType	R	A comment used to further describe a related account type code.	ACCOUNT TO WHICH FRINGE BENEFITS ARE BEING CHARGED; ACCOUNT TO WHICH ENDOWMENT/FFAE INCOME IS DISTRIBUTED; ACCOUNT TO WHICH STUDENT LOAN INTEREST INCOME IS BEING DISTRIBUTED
RelAcTypDes	Related Account Type Description	Character	100	FIN	RelAccountType	R	A textual description of the code which identifies a type of relationship between two accounts.	STUDENT LOAN INTEREST INCOME; SUBSIDIARY ACCOUNT; ASSET ACQUISITION
ResAcTypCd	Research Account Type Code	Character	2	FIN	Account ResAcType	R	A code used to distinguish between internally and externally funded research. A null value in this field is possible and represents that the code is not applicable to this account.	01=Research-External; 02=Research-Internal
ResAcTypDes	Research Account Type Description	Character	30	FIN	ResAcType	R	A textual description of the code used to distinguish between internally and externally funded research.	RESEARCH-EXTERNAL; RESEARCH-INTERNAL
Shortcode	ShortCode Number	Character	6	CHRTFLD1	CnvAcctOrg CnvBSAccts CnvChartFd CnvEndow CnvPgmProj	R	A six digit code that maps to a unique combination (blank and non-blank) of chartfields; fund, department, class, program, and project/grant.	000094 = USDA-6J89B; 012984 = VA Hospital/Med Admin; 035677 = Research Agreement (SAE);

Physical Element Name	Logical Element Name	Format Type	Format Length	Data Sets	Table Locations	Security Code	Element Definition	Examples of Valid Values
Shortcode_Descr50	ShortCode Description	Character	50	CHRTFLD1	CnvChartFd	R	The title of the six digit code that maps to a unique combination (blank and non-blank) of chartfields; fund, department, class, program, and project/grant.	USDA-6J89B; VA Hospital/Med Admin; Research Agreement (SAE)
Shortcode_Status	ShortCode Status Code	Character	1	CHRTFLD1	CnvChartFd	R	A code representing the current disposition of the shortcode.	C = Closed; E = Endowment; O = Open; T = Terminated; R = Re-opened
Shortcode_Status_Descrshort	ShortCode Status Short Description	Character	10	CHRTFLD1	CnvChartFd	R	An abbreviated description of the current disposition of the shortcode.	Closed; Endowment; Open; Terminated; Re-opened
SubClass	SubClass Code	Character	5	Various	CnvChartFd CnvEndow CnvSubClas	R	A code used to group related activities directed towards the accomplishment of a set of common identifiable objectives or purposes.	11000= General Academic Instruction
SubClass2	SubClass Code	Character	5	Various	CnvChartFd CnvSubClas	R	A code used to group related activities directed towards the accomplishment of a set of common identifiable objectives or purposes. The "second" subclass field is used for ICR excluded subclasses.	1100X= Gen Acad Instr-ICRX

## Legacy Financial Data Element Dictionary

Physical Element Name	Logical Element Name	Format Type	Format Length	Data Sets	Table Locations	Security Code	Element Definition	Examples of Valid Values
SUBTransAmt	Service Unit Billing Transaction Amount	Number	13,2	FIN	SUB	R	The total dollar amount charge associated with a service unit billing transaction. If SUBTransUnitPriceAmt and SUBTransQtyNum are present, the value is (price x quantity).	548.25; 79.80
SUBTransDeptRefTxt	Service Unit Billing Transaction Department Reference Text	Character	6	FIN	SUB	R	A reference number or text associated with a service unit billing transaction. The originating department supplies this number or text.	327308; ZABAG
SUBTransDes	Service Unit Billing Transaction Description	Character	30	FIN	SUB	S	A description of the services rendered or the items ordered from the service unit. This element may contain sensitive data for certain document types, specifically, full or partial social security or student ID numbers.	TELECOM INSTALLATION/SERVI CE;
SUBTransDt	Service Unit Billing Transaction Date	Date	9	FIN	SUB	R	The date of the service unit billing transaction.	30-SEP-93; 30-DEC-93; 31-MAR-94
SUBTransIDNum	Service Unit Billing Transaction Identification Number	Character	18	FIN	SUB	R	A concatenated number created from the AcNum, CalYrMon, and Service Unit Billing sequence number (a number automatically assigned to identify a detail line in the paper SUB report), used to uniquely identify a financial transaction.	153210199601000001; 019393199601000013; 022102199601000007

Physical Element Name	Logical Element Name	Format Type	Format Length	Data Sets	Table Locations	Security Code	Element Definition	Examples of Valid Values
SUBTransOrderNum	Service Unit Billing Transaction Order Number	Character	9	FIN	SUB	R	The order number of services rendered or the items ordered for which the account is being charged.	D7640; 747-3811
SUBTransQtyNum	Service Unit Billing Transaction Quantity Number	Number	15,5	FIN	SUB	R	The quantity of items for which the account is being charged.	35; 200; 79.8
SUBTransUnitPriceAmt	Service Unit Billing Transaction Unit Price Amount	Number	15,5	FIN	SUB	R	The price per unit of the items for which the account is being charged.	9.45; 5.33; 23.28
SUBUnitBillCd	Service Unit Billing Unit Billing Code	Character	5	FIN	SUB SUBUnitBillCds	R	A code indicating the service unit which performed the services rendered or delivered the items ordered.	08020=PARKING 3-7314; 30500=U STORES 8-7070; 30610=RENTAL TELECOM 3-2000
SUBUnitBillDes	Service Unit Billing Unit Billing Description	Character	32	FIN	SUB	R	A textual description, including telephone number, of the code indicating the service unit which performed the services rendered or delivered the items ordered.	PARKING 3-7314; U STORES 8-7070; RENTAL TELECOM 3-2000
SUFinClassGrpCd	Source Use Financial Class Group Code	Character	3	FIN	FinClass SUFinClassGrp	R	A code used to group class codes for Value Centered Management(VCM) purposes. For example, source use class group code 912 is assigned these class codes: 6529-Unbilled Cost Reimb, 6539-Unbilled RevGrants&FP, 6600-Fed Grants Rev Non LOC, and so on.	900=GENERAL FUND APPROPRIATION; 950=FACULTY SALARIES; 986=INDIRECT COST

**Legacy Financial Data Element Dictionary**

Physical Element Name	Logical Element Name	Format Type	Format Length	Data Sets	Table Locations	Security Code	Element Definition	Examples of Valid Values
SUFinClassGrpDes	Source Use Financial Class Group Description	Character	32	FIN	SUFinClassGrp	R	A textual description of the code used to group class codes for Value Centered Management(VCM).	GENERAL FUND APPROPRIATION; FACULTY SALARIES; INDIRECT COST
SUFinClassGrpTypCd	Source Use Financial Class Group Type Code	Character	1	FIN	SUFinClassGrp SUFinClassGrpType	R	A code that distinguishes source use financial class groups between source of funds, uses of funds and miscoded.	S=SOURCE; U=USE; M=MISCODED
SUFinClassGrpTypDes	Source Use Financial Class Group Type Description	Character	20	FIN	SUFinClassGrpType	R	A textual representation of the code that distinguishes source use financial class groups between source of funds, uses of funds and miscoded.	S=SOURCE; U=USE; M=MISCODED
SUMultiplier	Source Use Multiplier	Number	1	FIN	FinClass	R	Used for transfer classes to multiply a class code or several class codes by negative one or positive one to arrive at a net amount for a VCM source or use line item. For example, source use class group code 924, Endowment Distribution, is assigned to class codes 9215 and (4450). The multiplier is used to multiply 4450 by -1 and 9215 by +1 to arrive at a net amount for these two class codes in the Endowment Distribution line.	-1; +1